

# JUNEAU COUNTY SURVEY MONUMENT RECORD

CORNER NO. 81  
SECTION 19  
TOWN 15N  
RANGE 2E.

TYPE OF MONUMENT: 1" DIAMETER IRON ROD

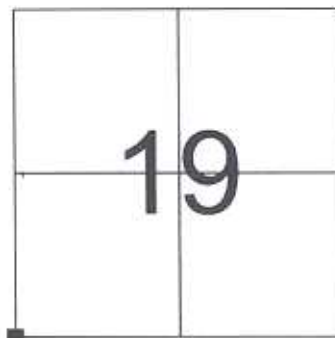
JUNEAU COUNTY COORDINATES  
NORTHING: 143,705.05  
EASTING: 400,470.30

■ = CORNER MONUMENT RESTORED

BASIS FOR MONUMENT LOCATION  
(USE REVERSE SIDE IF NECESSARY)

SHOW INFO SUCH AS: HISTORY OF CORNER, WITH REFERENCE TO VOLUME AND PAGE DATES. SURVEYOR; EXACT DESCRIPTION OF MONUMENT PLACED OR FOUND, IF LOCATION COMPUTED, BY TAPED OR EDM TRAVERSE; LANDOWNER REMARKS, ETC.

1" DIAMETER IRON ROD FOUND AS PER TIE SHEET DATED 4/14/01 BY JAMES CARROLL. IRON IS 10" +/- DEEP.



LOCATION

## LEGEND

- = 1" DIAMETER IRON ROD FOUND
  - = 3/4" X 24" IRON ROD SET
- AZIMUTHS ARE MAGNETIC



CERTIFIED CORRECT

*Patrick J. Dederich*  
REGISTERED LAND SURVEYOR

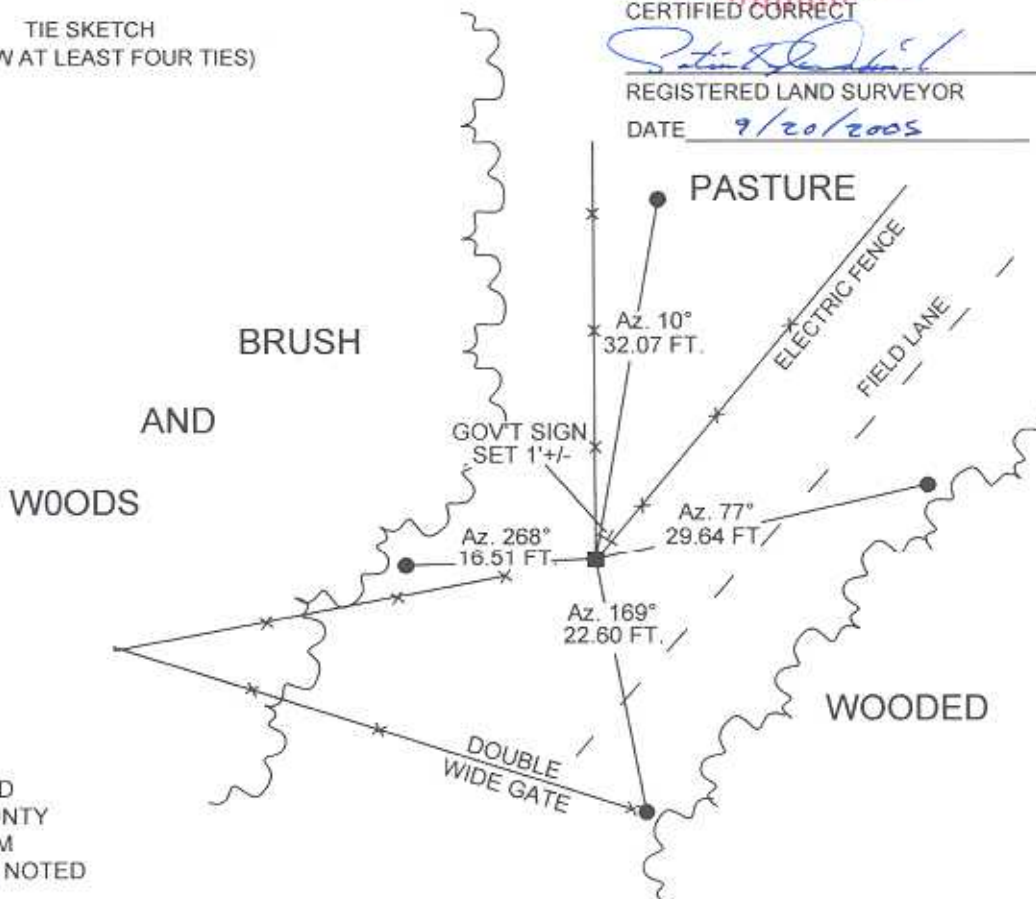
DATE 9/20/2005

TIE SKETCH  
(SHOW AT LEAST FOUR TIES)

NOT TO SCALE



AZIMUTHS ARE BASED ON THE JUNEAU COUNTY COORDINATE SYSTEM UNLESS OTHERWISE NOTED



JUNEAU COUNTY

Survey Monument Record

TYPE OF MONUMENT: 1" iron rod

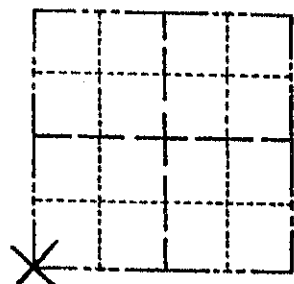
STATE PLANE COORDINATES: N \_\_\_\_\_  
E \_\_\_\_\_

ELEVATION — M.S.L. DATUM: \_\_\_\_\_

THETA ANGLE: \_\_\_\_\_

FIELD BOOK: \_\_\_\_\_ PAGE \_\_\_\_\_

CORNER NO. 81  
SECTION 19  
TOWN 15  
RANGE 2E



LOCATION  
(Indicated by 'X')

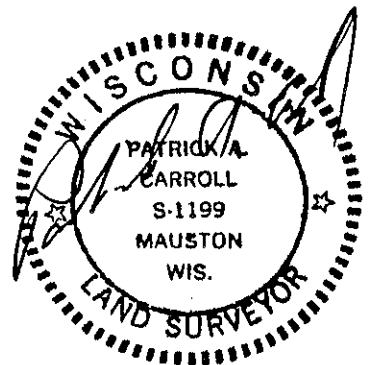
SEAL:

BASIS FOR MONUMENT LOCATION

(Use reverse side if necessary)

Show info such as: History of corner, with reference to Vol. and pg. dates, surveyor; exact description of monument replaced; if location computed, by taped or EDM traverse; landowner remarks, etc.

1" iron rod set at the intersection of the east-west fence line with the north-south fence line in previous surveying in Juneau County. Accepted as the true corner location.



CERTIFIED CORRECT:

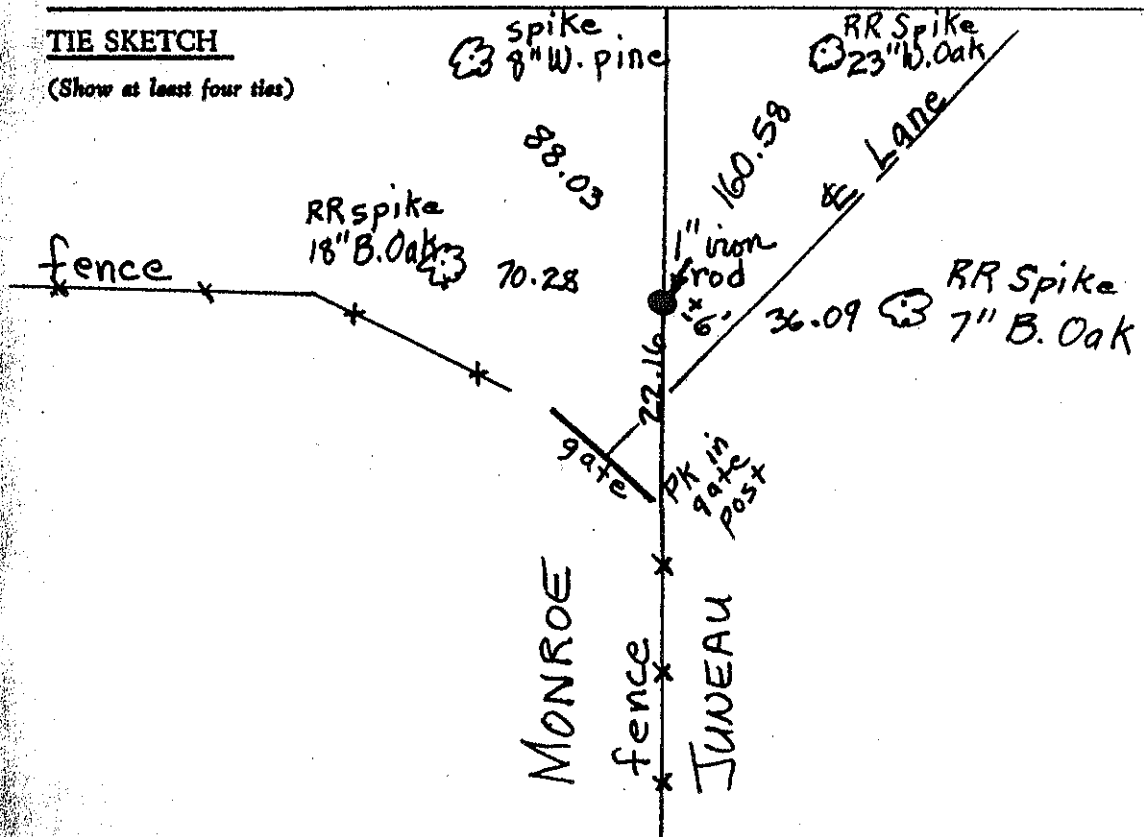
*Patrick A. Carroll*

Registered Land Surveyor

DATE: 04/14/01

TIE SKETCH

(Show at least four ties)



SE 54.24-715N-R1E