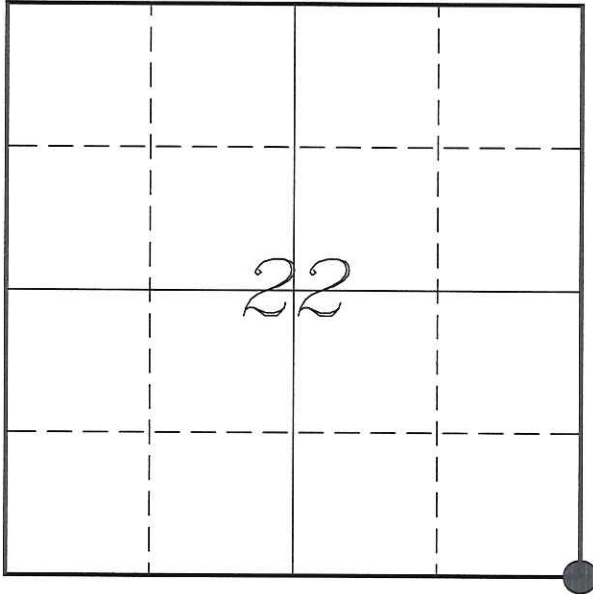


U. S. PUBLIC LAND SURVEY MONUMENT RECORD

SECTION 22, T15N, R1E, TOWN OF GLENDALE  
MONROE COUNTY, WISCONSIN



LOCATION OF LANDMARK

MONROE COUNTY COORDINATE SYSTEM	
Northing	312335.959
Easting	747365.359
Datum	NAD 1983 (1991)
Elevation	
Datum	
TYPE OF LANDMARK:	
Existing Harrison Monument	
BEARINGS ARE REFERENCED TO:	
Monroe County Coordinates	

Witnesses: Laurence E Johns III

Date: 10 January 2014

Describe any record evidence, monument evidence, testimonial evidence or any other material evidence you considered and whether the monument was found or restored through acceptance of an obliterated evidence location.

No bearing trees of record were located. Though blazed trees were noted in the area, possibly from when Sime set this monument.

I found the TCP Monument (Harrison Mon) set by Sime, approximately 10' North and 3' West of a 3-way fence corner.

It appears from Sime's survey that he set this corner based on the N 1/4 Corner of Section 27 and an existing iron with cog. Holden's survey of 1904 shows that he set this iron with cog.

Holden shows that he found the original post, though very rotted, at this corner. The iron and cog was set based on this location. The monument that was set by Sime was a retracement of Holden's survey using this iron.

I accepted the monument that was set by Sime as the best available evidence of the original government corner.

Describe or show any material discrepancy between the location of the restored corner and that of the corner previously restored or re-established.

John E Davidson established this corner in January 1852.

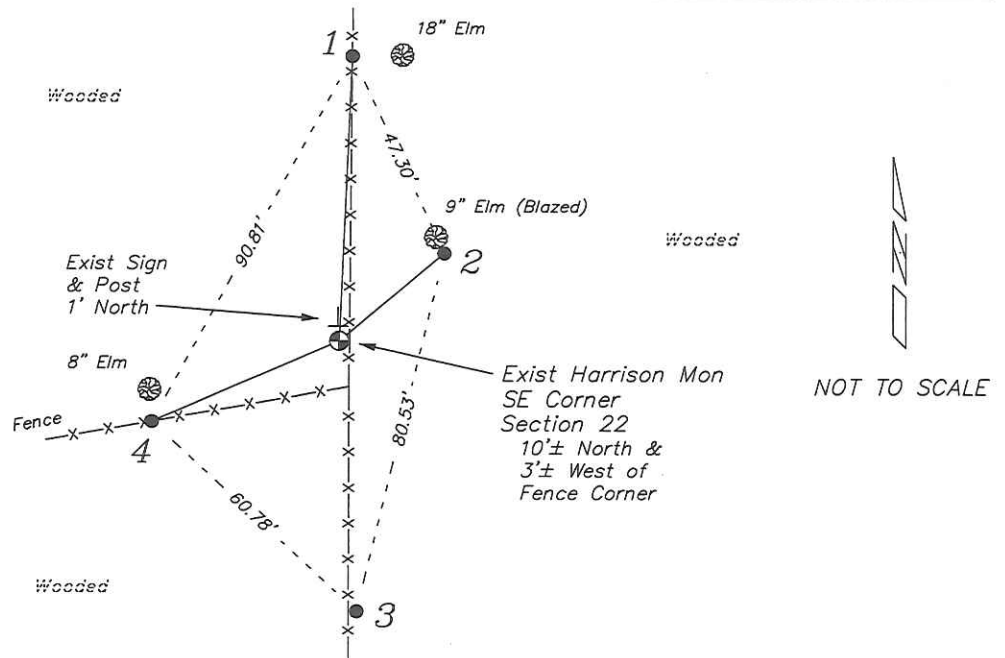
Fred Holden was at this corner, in May 1904, during a survey in Section 22. He shows that he found the original corner.

Fred Holden was at this corner again, in November 1906, during a survey in Section 23. He shows that he used the same corner as previous.

Gary Sime was at this corner, in July 2001, during a survey in Section 27. He shows that he set a TCP Mounument at this corner.

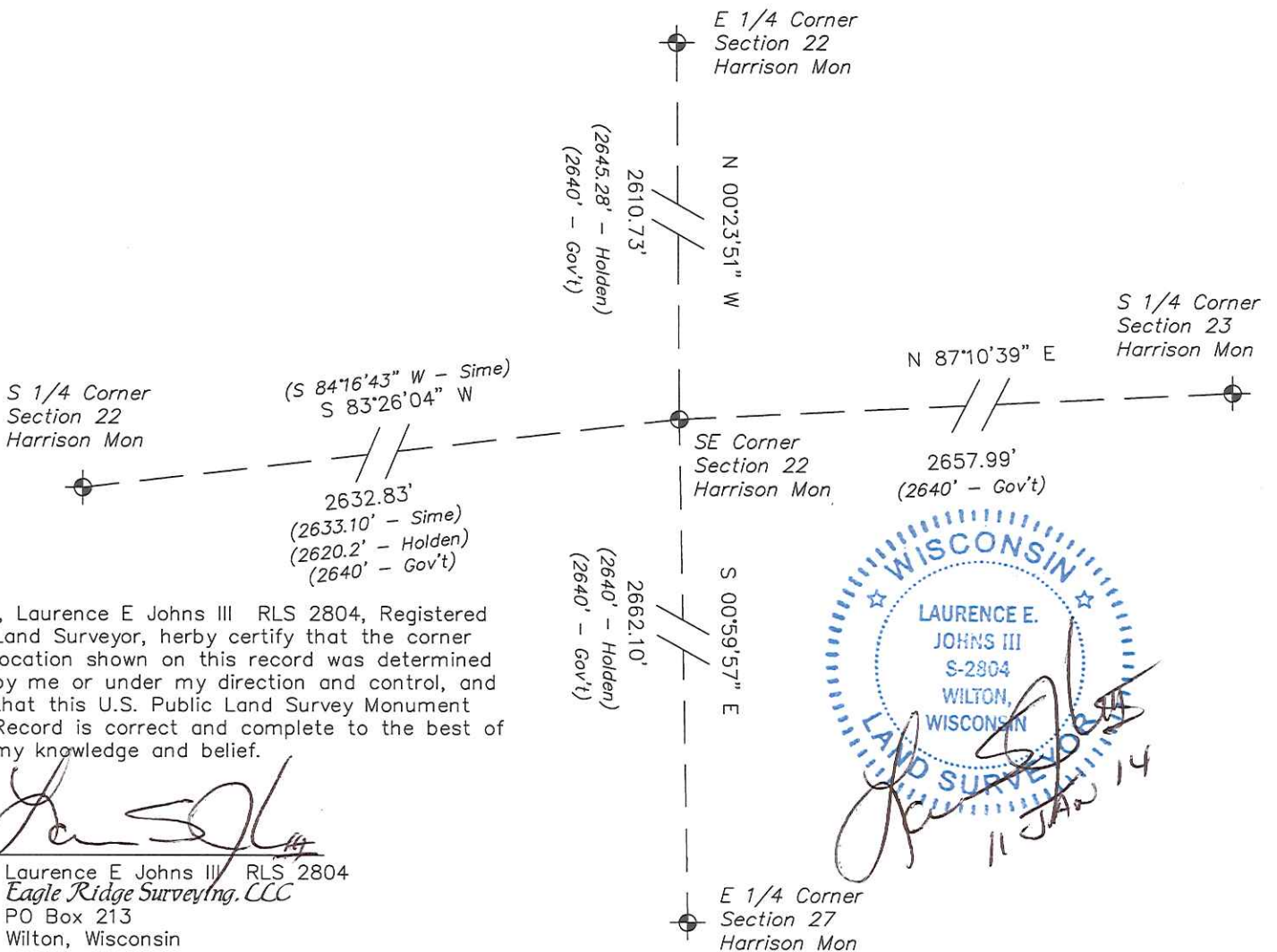
# RECORD OF DURABLE WITNESS MONUMENTS

NO	DESCRIPTION	BEARING	DISTANCE
1	Set 3/4" x 18" Iron Rod In Fence - 5' West of a 18" Elm	N 02°36'19" E	62.06'
2	Set 3/4" x 18" Iron Rod 4' Southeast of Nail in Blazed 9" Elm	N 50°02'15" E	29.81'
3	Set 3/4" x 18" Iron Rod In Fence - East Side of Wood Post	S 03°37'34" E	59.21'
4	Set 3/4" x 18" Iron Rod In Fence - 3' South of 8" Elm	S 66°33'00" W	44.42'



## PLAN VIEW DRAWING OF REFERENCE TIES

Map Showing Distance And Direction To Other Public Land Survey Corners Used For Re-Establishing The Corner



I, Laurence E Johns III RLS 2804, Registered Land Surveyor, hereby certify that the corner location shown on this record was determined by me or under my direction and control, and that this U.S. Public Land Survey Monument Record is correct and complete to the best of my knowledge and belief.

*Laurence E. Johns III*  
 Laurence E Johns III RLS 2804  
 Eagle Ridge Surveying, LLC  
 PO Box 213  
 Wilton, Wisconsin  
 11 January 2014