

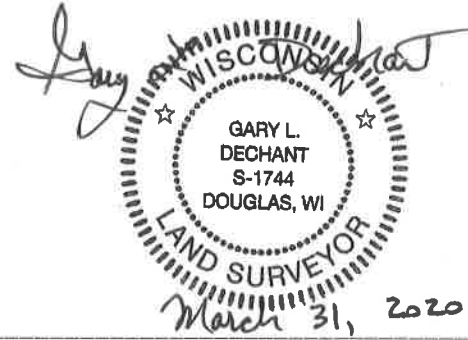
**U.S. PUBLIC LAND CORNER  
MAINTENANCE**

# 55

**Corner ID: E 1/4 Sec. 18, T15N-R1E  
41501182000**

<u>DATE</u>	<u>CREW</u>	<u>MONUMENT INFO</u>
March 30, 2020	Zachariah P. Dechant Gary L. Dechant	Existing Harrison, intact, down 6", 10' NW of center of CTH "P" along curve

	<u>Compass Bearing</u>	<u>Distance</u>
1) Set 3/4"x24" round iron bar, down 6" in center of field entrance, 7' east of fence	North	59.51
2) Set 3/4"x24" round iron bar, 3' north of 8" Spruce, on line w/ north end of house	S47E	42.02'
3) Set 3/4"x24" round iron bar in lawn, 13' south of angle iron fence corner in concrete	S85W	30.46'
4) Set 3/4"x24" round iron bar, down 6", 5' west of power pole in north-south fence	N18W	46.69'



41501182000

I, William C. Jung, do hereby certify that on the 20th day of September 1982, I found ~~(evidence)~~ (no evidence) of the East 1/4 corner of Section 18, T 15 N, R 1 E Fourth Principal Meridian, and I re-established said corner according to the Wisconsin Statutes as shown and described hereon.

Dated this 26th day of Jan. 1983.

William C. Jung

Deputy County Surveyor  
Title

History of corner establishment since Original Government Survey

Holden found the original corner here in November of 1907. Apparently he set an iron here as shown in some unrecorded field notes. Town Board Records indicate that the centerline of the road to the South was to have been on the section line.

Description of corner evidence found:

I could not find an iron at this corner. I did find Holden's pipe, down 6", at the E1/16SE corner of Section 18. I set the 1/4 corner on line and proportionately between this latter pipe and the fence corner at the NE of Section 18. For alignment and distance, this fits conditions along the East line of Section 18 very well.

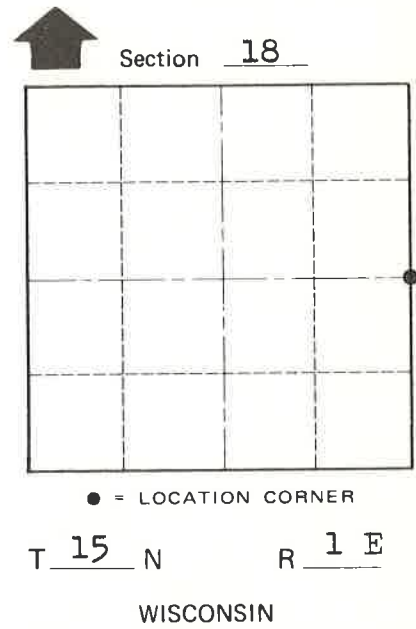
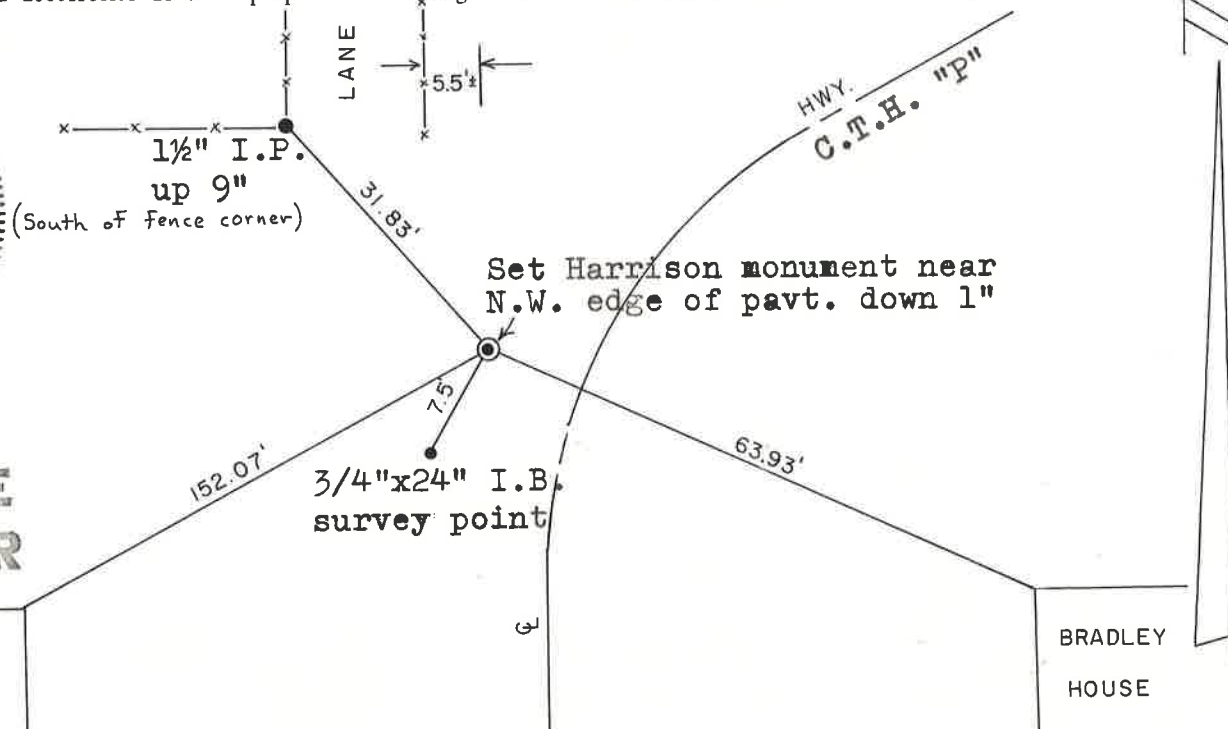
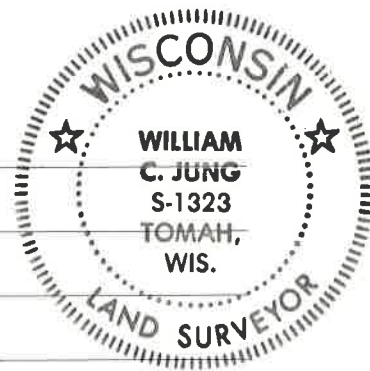
**See Reverse Side  
For Maintenance**

Description of corner and witness monuments, references and accessories used to perpetuate the original or re-established location of this corner:

Witnesses to corner location:

William C. Jung

Melvin Pliner



Approved: **HARLEY A. SIME**  
**MONROE CO. SURVEYOR**

SURVEY CONTROL ORDER

Horizontal \_\_\_\_\_

Vertical 1

Corner	East (X)	North (Y)	Elevation (Z)	Zone
Control Sta. Name				

~~City, Village or~~ Town of Glendale

County of Monroe

COUNTY SURVEYOR FORM NO. 1