

41501180020

I, William C. Jung, do hereby certify that on the 4th day of October 1982, I found (evidence) ~~(no evidence)~~ of the South 1/4 corner of Section 18, T 15 N, R 1 E Fourth Principal Meridian, and I re-established said corner according to the Wisconsin Statutes as shown and described hereon.

History of corner establishment since Original Government Survey

O. R. Dahl was at this corner in December of 1868.

Dated this 26th day of Jan. 1983.

William C. Jung

Deputy County Surveyor

Title

Description of corner evidence found:

I set this corner at a computed location so as to best fit the evidence found in Sections 18 and 19. The existing North-South fence @ the Center 1/4 of Section 19 is now only 5' off line. My distance a mile to the South fits Dahl's within about 3.5'. There obviously was some unrecorded surveying long ago in Section 18, and as such there are many line fences in Section 18. By averaging, I've matched this evidence as best I could.

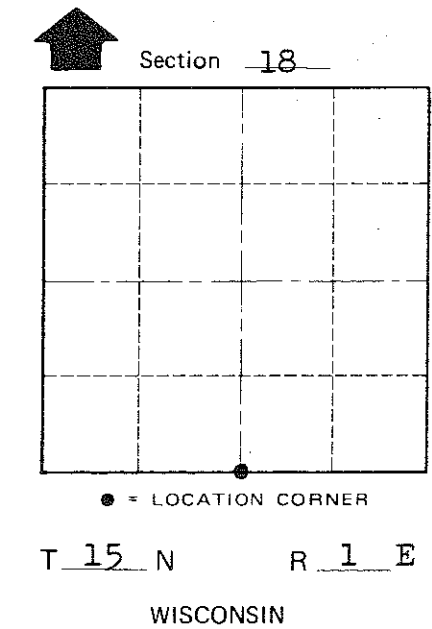
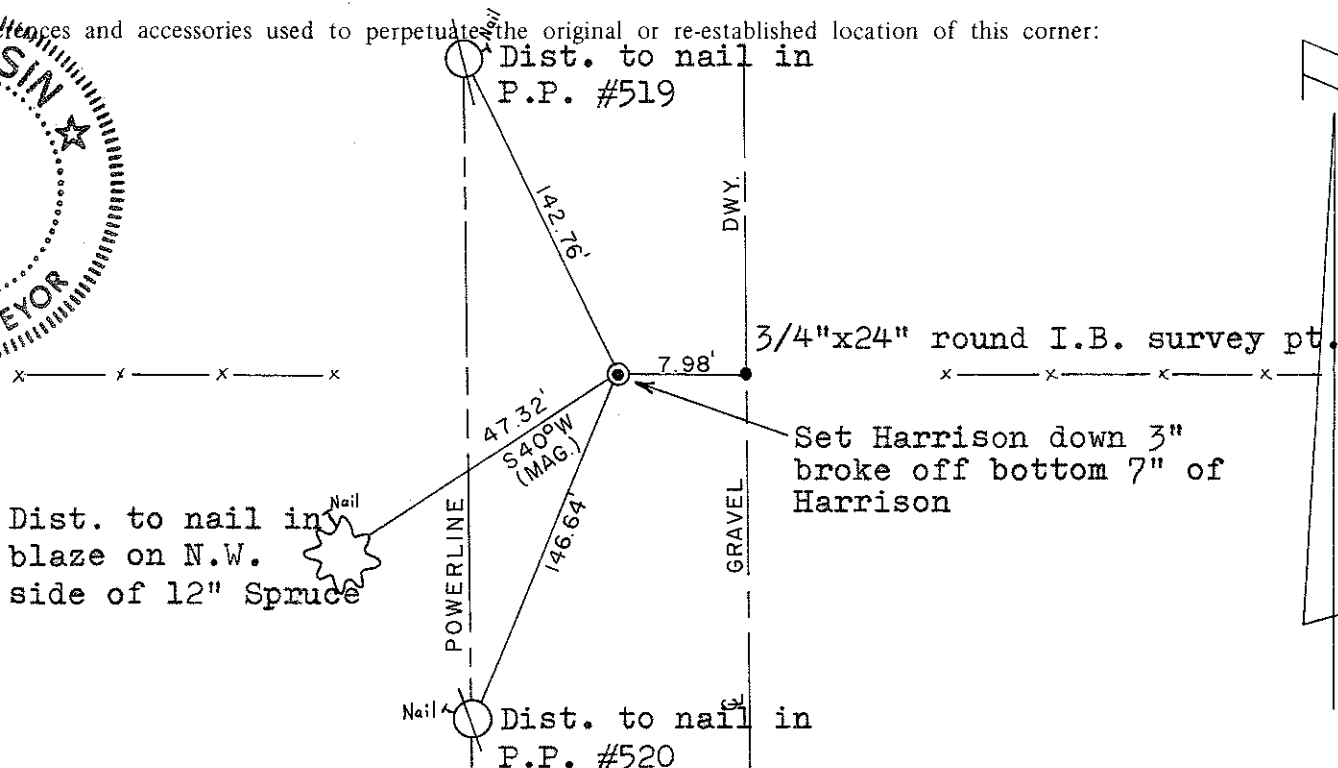
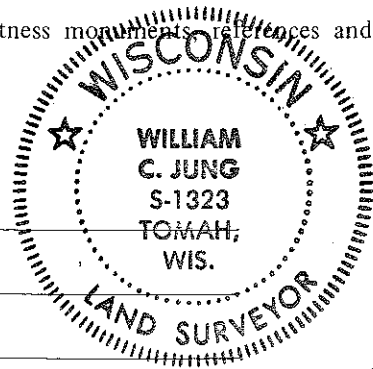
COUNTY SURVEYOR FORM NO. 1

Description of corner and witness monuments, references and accessories used to perpetuate the original or re-established location of this corner:

Witnesses to corner location:

William C. Jung

Bryan H. Meyer



Approved: **HARLEY A. SIME**
MONROE CO. SURVEYOR

SURVEY CONTROL ORDER

Horizontal	_____
Vertical	_____

WISCONSIN COORDINATE SYSTEM

Corner	East (X)	North (Y)	Elevation (Z)	Zone
Control Sta. Name				

City, Village or Town of Glendale
County of Monroe