

57

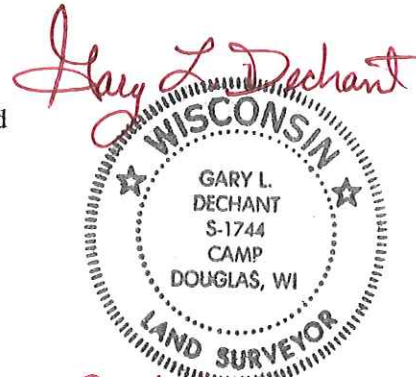
**U.S. PUBLIC LAND CORNER
MAINTENANCE**

Corner ID : E1/4 Sec. 16, T15N-R1E
41501162000

| <u>DATE</u> | <u>CREW</u> | <u>MONUMENT TYPE -----</u> |
|--------------------|---|---|
| September 10, 2015 | Zachariah P. Dechant Gary L. Dechant | Existing 1" iron pipe over Harrison, 18' south of Novel Ave 10' west of power pole. Fence line running south |

References:

| | <u>Bearing</u> | <u>Distance</u> |
|---|----------------|-----------------|
| 1) Set 3/4"x24" round iron bar, down 12" in field | N11E | 62.58' |
| 2) Set 3/4"x24" round iron bar, down 6" | S34E | 26.11' |
| 3) Set 3/4"x24" round iron bar, down 6" | S11W | 22.78' |
| 4) Set 3/4"x24" round iron bar, down 12" in field | N34W | 69.98' |



October 29, 2015

41501162000

See Reverse Side
For Maintenance

I, William C. Jung, do hereby certify that on the 5th day of May 1981, I found (evidence) ~~(no evidence)~~ of the W¹/₄ corner of Section 15, T 15 N, R 1 E Fourth Principal Meridian, and I re-established said corner according to the Wisconsin Statutes as shown and described hereon.

History of corner establishment since Original Government Survey

O.R. Dahl found this corner existing in July of 1868.

Description of corner evidence found:

Set the corner at a point equidistant between the N.W. and S.W. section corners and on line with a line fence going to the South. This fits the old established West line of the SW1/4 very well, especially at the occupied W1/16SW corner.

Dated this 14th day of August 1981.

William C. Jung, R.L.S. 1323

County Surveyor's Office

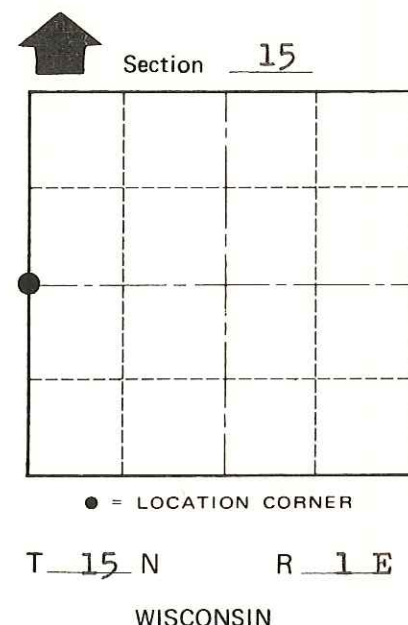
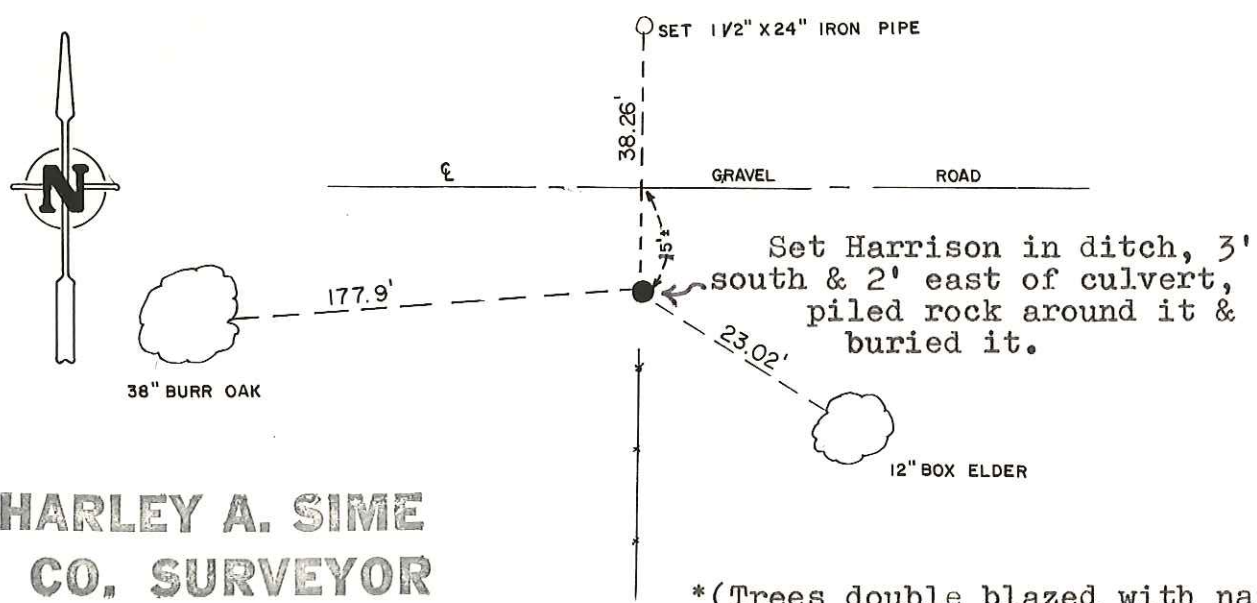
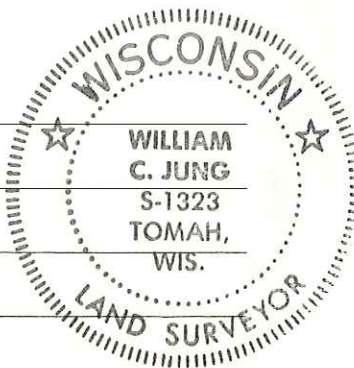
Title

William C. Jung

Description of corner and witness monuments, references and accessories used to perpetuate the original or re-established location of this corner:

Witnesses to corner location:

W. Jung
C. Pietz
G. Dechant



Approved: **HARLEY A. SIME**
MONROE CO. SURVEYOR

SURVEY CONTROL ORDER

Horizontal _____
Vertical _____

WISCONSIN COORDINATE SYSTEM

| Corner | East (X) | North (Y) | Elevation (Z) | Zone |
|-------------------|----------|-----------|---------------|------|
| Control Sta. Name | | | | |

~~City, Village or~~ Town Glendale
County of Monroe

COUNTY SURVEYOR FORM NO. 1