

CERTIFICATE

CERTIFIED LAND CORNER

No. 59

41501142000

I, Gary L. Dechant, do hereby certify that on the 31st day of AUGUST 1994, I found ~~reference~~ (no evidence) of the W/4 corner of Sec. 13, T 15 N, R 1 E Fourth Principal Meridian, and I re-established said corner according to the Wisconsin Statutes as shown and described hereon.

Dated this 2nd day of Sept. 1994.

Gary L. Dechant
R.L.S. 1744
Title

History of corner establishment since Original Government Survey

Dahl was at this corner in 1871
No known history since the original government survey.
other

Description of corner evidence found:

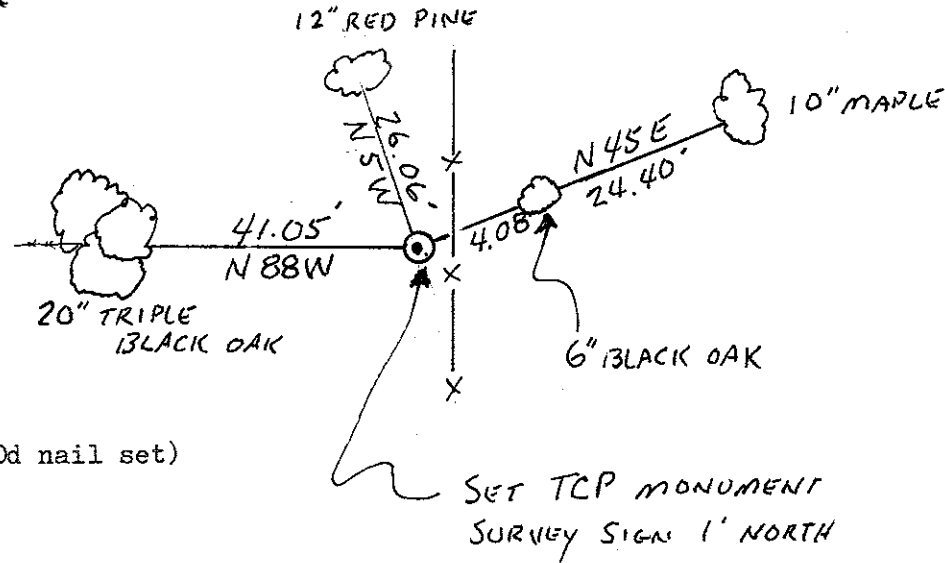
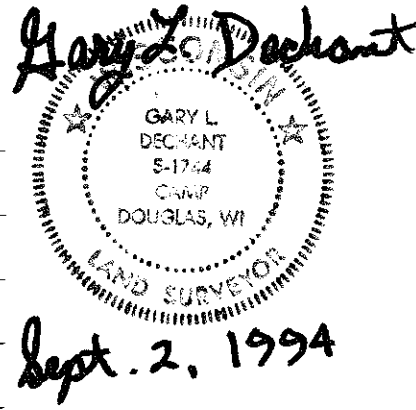
Set by single proportionate measurement on line with section corners.
Falls approx. 6' west of occupied north-south fence.
Fits distance to "Creek 12 links wide" of Original notes well, "Creek" now known as the Baraboo River and is also wider than 12 links.

Description of corner and witness monuments, references and accessories used to perpetuate the original or re-established location of this corner:

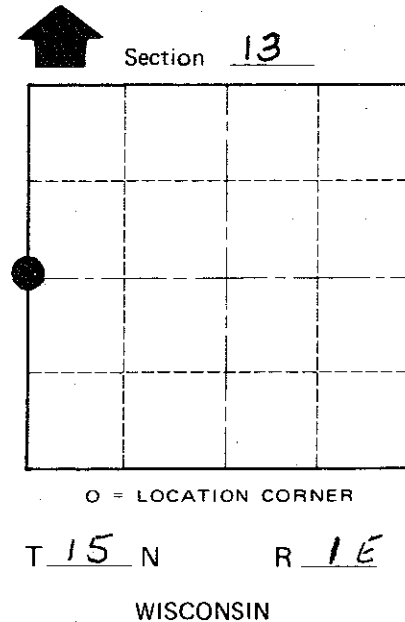
Witnesses to corner location:

David E. Madison

Gary L. Dechant



(Trees double blazed with 20d nail set)



COUNTY SURVEYOR FORM NO. 1

SURVEY CONTROL ORDER

Horizontal	_____
Vertical	_____

WISCONSIN COORDINATE SYSTEM

Corner	East (X)	North (Y)	Elevation (Z)	Zone
Control Sta. Name				

City, Village or Town GLENDALE
County of MONROE