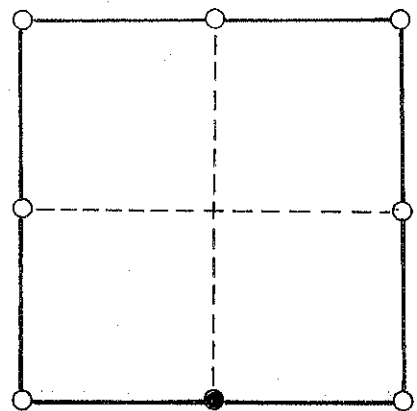


CERTIFIED LAND CORNER

I do hereby certify that on the 6 day of MAY, 2005, I found (evidence) (~~no evidence~~) of the S/4 corner of Section 14, T 15 N, R 1 E W, Fourth Principal Meridian, and I re-established said corner according to the Wisconsin Statutes as shown and described hereon.

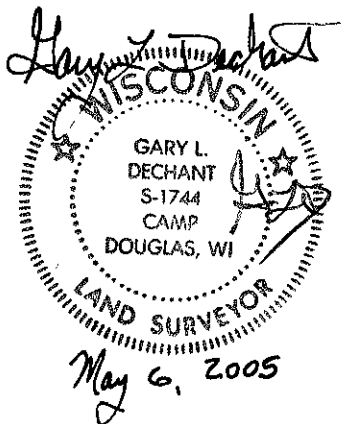
SECTION 14



● = CORNER LOCATION

T 15 N R 1 E W

TOWN OF: GLENDALE



Witnesses to corner location:

Zachariah P. Dechant

Gary L. Dechant

HISTORY OF CORNER:

Fred Holden set an iron pipe at this corner in Nov. of 1906.

Bill Jung, in 1981, found Holden's iron pipe and replaced it with a Harrison Monument.

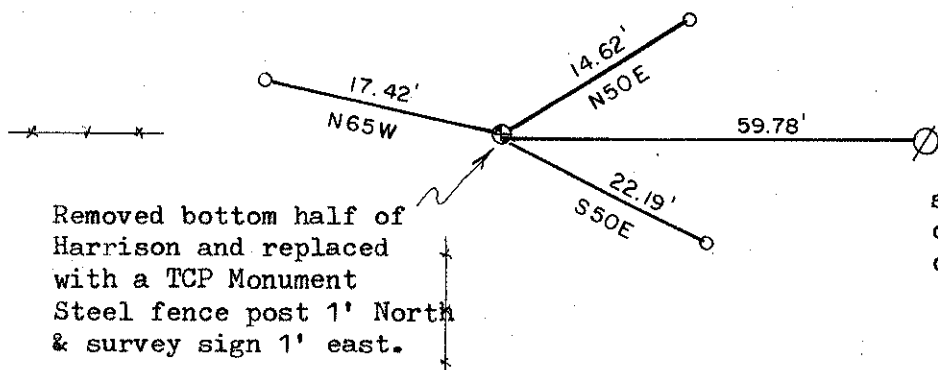
DESCRIPTION OF CORNER EVIDENCE FOUND:

During a survey I did, dated Feb. 23, 2004, we found the top half broken off. Someone set this top half 4'± west of bottom half. It was frozen in the ground and could not be removed. By the request of Mr, Howard Pitel, adjacent landowner, and approved by Garold Sime, County Surveyor, we removed both halves, and replaced the bottom half with a TCP Monument and new witness monuments as shown below.

Bottom half fit previous survey work and power pole to the east.

DESCRIPTION OF CORNER AND WITNESS MARKERS:

○ = Set 1"x30" round iron bar, down 12".



Removed bottom half of Harrison and replaced with a TCP Monument Steel fence post 1' North & survey sign 1' east.

set 60d nail on north side of power pole

I, William C. Jung, do hereby certify that on the 5th day of May 19 81, I found (evidence) (~~no evidence~~) of the S 1/4 corner of Section 14, T 15 N, R 1 E Fourth Principal Meridian, and I re-established said corner according to the Wisconsin Statutes as shown and described hereon.

Dated this 14th day of August 1981.

William C. Jung, R.L.S. 1323

County Surveyor's Office

Title

William C. Jung

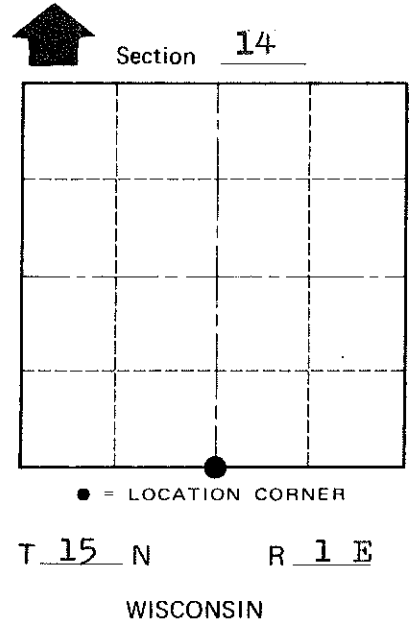
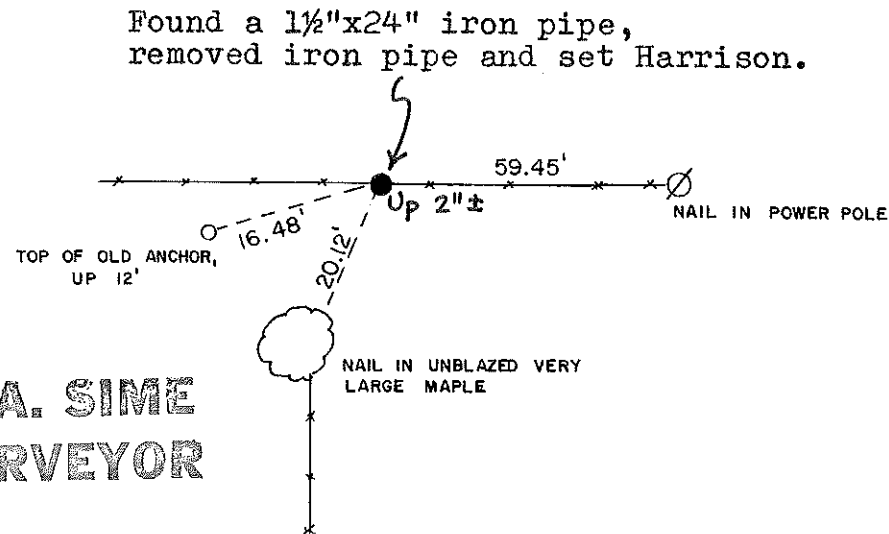
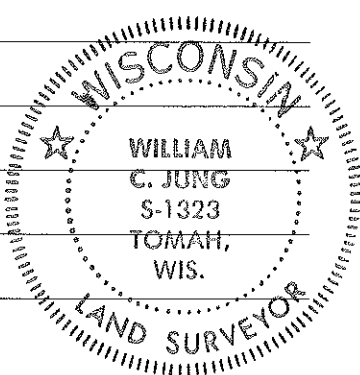
Description of corner and witness monuments, references and accessories used to perpetuate the original or re-established location of this corner:

Witnesses to corner location:

W. Jung

C. Pietz

G. Dechant



Approved: **HARLEY A. SIME**
MONROE CO. SURVEYOR

WISCONSIN COORDINATE SYSTEM

SURVEY CONTROL ORDER

Horizontal	_____
Vertical	_____

Corner	East (X)	North (Y)	Elevation (Z)	Zone
Control Sta. Name				

~~Cay Village~~ Town Glendale
County of Monroe

COUNTY SURVEYOR FORM NO. 1