

JUNEAU COUNTY SURVEY MONUMENT RECORD

CORNER NO. 54
SECTION 18
TOWN 15N.
RANGE 2E.

TYPE OF MONUMENT: STANDARD HARRISON

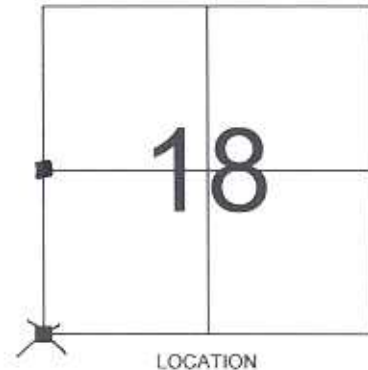
JUNEAU COUNTY COORDINATES
NORTHING: 151,631.80
EASTING: 400,528.41

■ = CORNER MONUMENT RESTORED

BASIS FOR MONUMENT LOCATION
(USE REVERSE SIDE IF NECESSARY)

SHOW INFO SUCH AS: HISTORY OF CORNER, WITH REFERENCE TO VOLUME AND PAGE DATES, SURVEYOR; EXACT DESCRIPTION OF MONUMENT PLACED OR FOUND, IF LOCATION COMPUTED, BY TAPED OR EDM TRAVERSE, LANDOWNER REMARKS, ETC.

STANDARD HARRISON MONUMENT FOUND AS PER TIE SHEET DATED 8/04/1989 BY JAMES CARROLL.



LEGEND

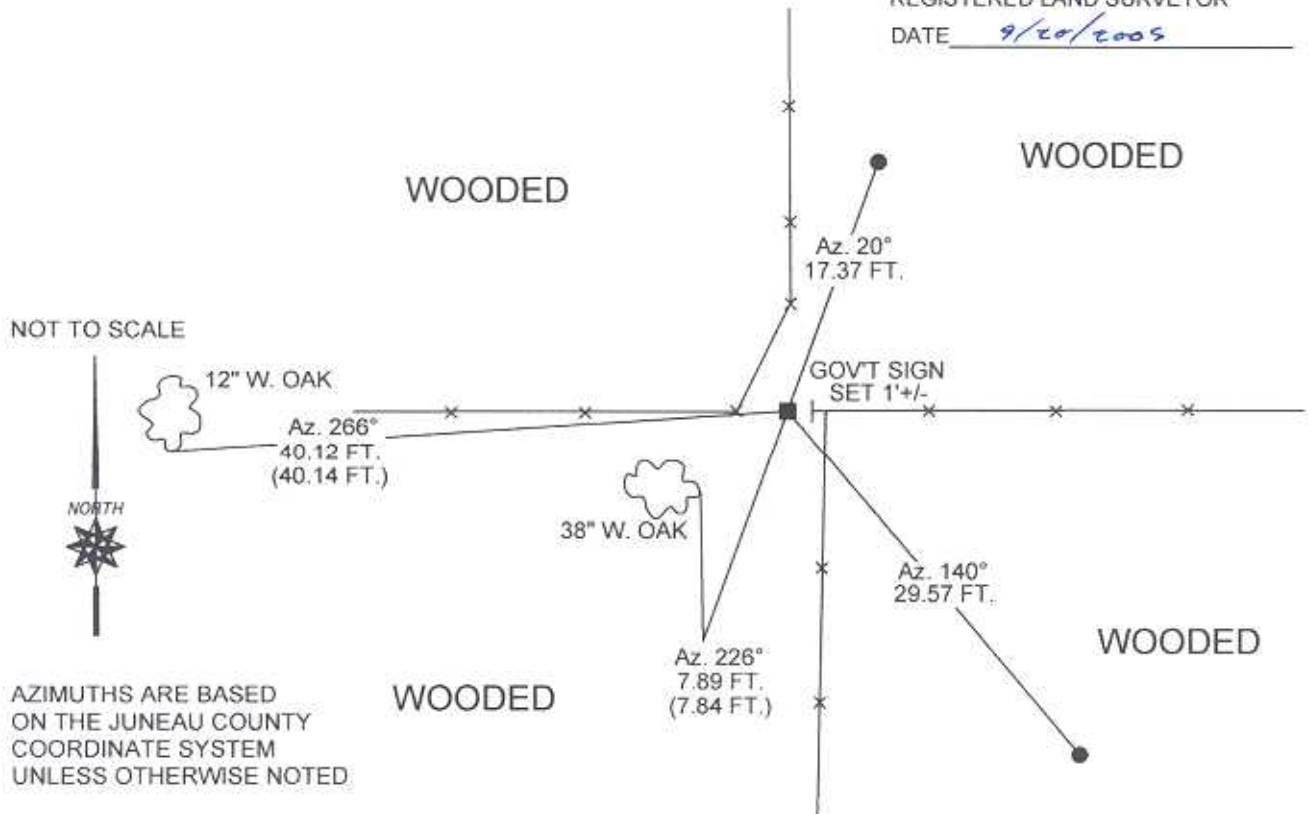
- = STANDARD HARRISON MONUMENT FOUND
 - = 3/4" X 24" IRON ROD SET
 - = 1" DIAMETER IRON PIPE FOUND
- AZIMUTHS ARE MAGNETIC
TREE TIES ARE FOUND RAILROAD SPIKES



CERTIFIED CORRECT

Patrick J. Dederich
REGISTERED LAND SURVEYOR
DATE 9/20/2005

TIE SKETCH
(SHOW AT LEAST FOUR TIES)



JUNEAU COUNTY

Survey Monument Record

TYPE OF MONUMENT: HARRISON MARKER

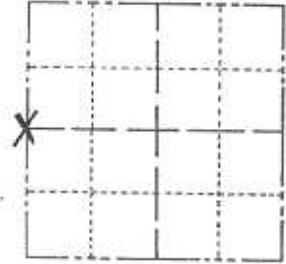
STATE PLANE COORDINATES: N _____
E _____

ELEVATION — M.S.L. DATUM: _____

THETA ANGLE: _____

FIELD BOOK: _____ PAGE _____

CORNER NO. _____
SECTION 18
TOWN 15
RANGE 2



LOCATION
(Indicated by 'X')

SEAL:



BASIS FOR MONUMENT LOCATION

(Use reverse side if necessary)

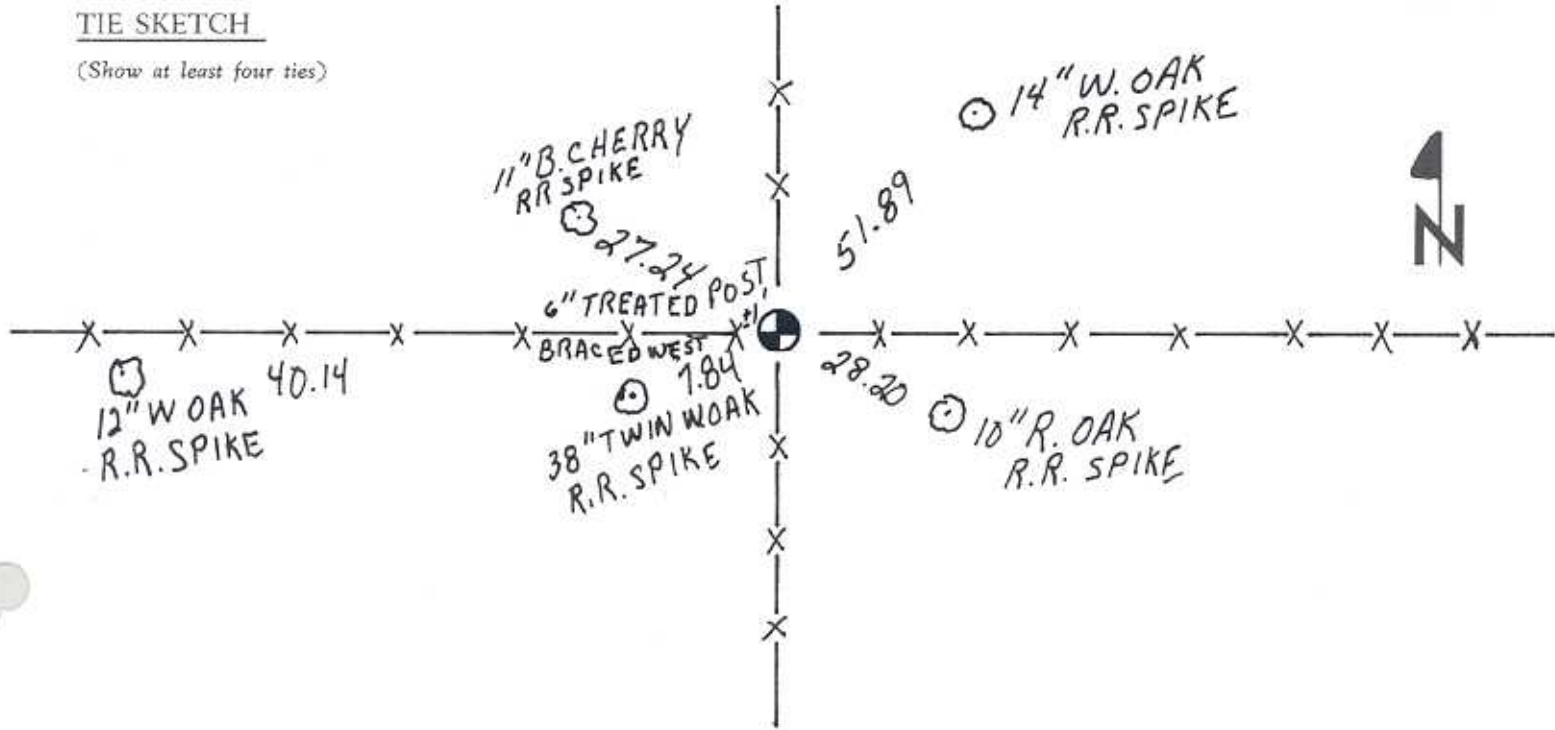
Show info such as: History of corner, with reference to Vol. and pg. dates, surveyor; exact description of monument replaced; if location computed, by taped or EDM traverse; landowner remarks, etc.

Monroe County
marker found
in place.

CERTIFIED CORRECT:
James J. Carroll
Registered Land Surveyor
DATE: 8-24-89

TIE SKETCH

(Show at least four ties)



CERTIFICATE

CERTIFIED LAND CORNER

No. 60

41501132000

I, Harley A. Sime, do hereby certify that on the 10th day of December 19 79, I found (evidence) (~~no evidence~~) of the East 1/4 corner of Section 13, T 15 N, R 1 E, Fourth Principal Meridian, and I re-established said corner according to the Wisconsin Statutes as shown and described hereon.

History of original corner establishment:

No known history since the original government survey.

Description of corner evidence found:

Replaced existing iron bar set by R. Hayden on Dec. 3, 1979. Accepted 3-way fence corner as best available evidence.

Dated this 30th day of Dec. 19 80.

Approved: HARLEY A. SIME
MONROE CO. SURVEYOR

Title

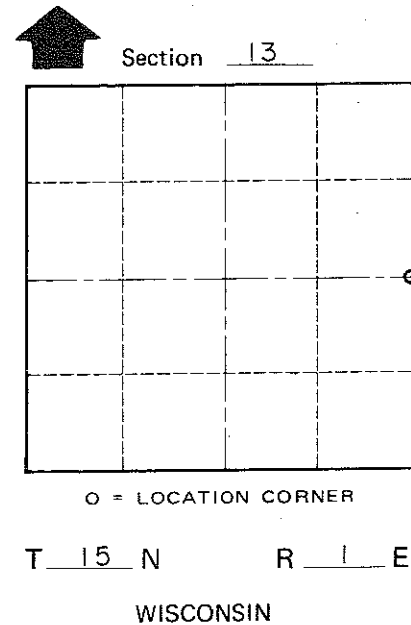
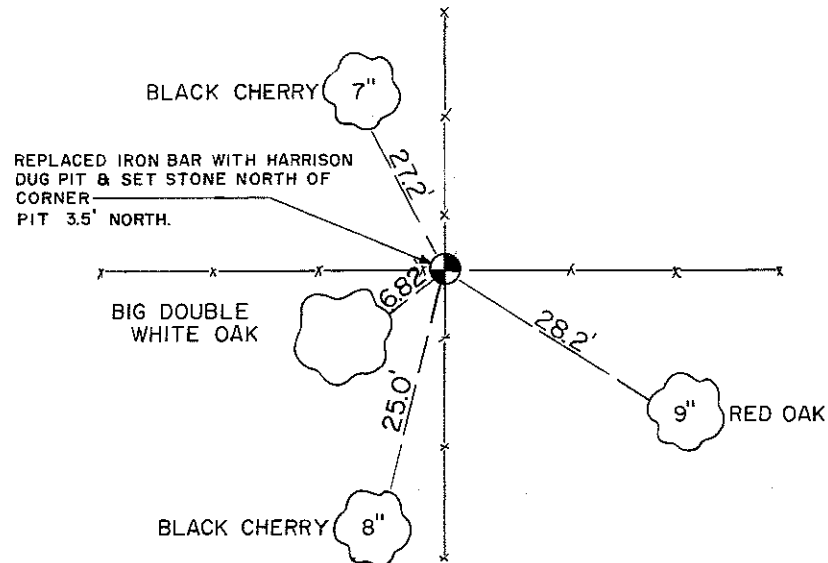
COUNTY SURVEYOR FORM NO. 1

Description of corner and witness monuments, references and accessories used to perpetuate the original or re-established location of this corner:

NOTE: ALL TREES DOUBLE BLAZED WITH NAIL & CAP SET.

Witnesses to corner location:

Dechant
Tormoen



SURVEY CONTROL ORDER

Horizontal	_____
Vertical	_____

WISCONSIN COORDINATE SYSTEM

Corner	East (X)	North (Y)	Elevation (Z)	Zone
Control Sta. Name				

_____ or Town Glendale
County of Monroe