

# JUNEAU COUNTY SURVEY MONUMENT RECORD

CORNER NO. 61  
SECTION 18  
TOWN 15N.  
RANGE 2E.

TYPE OF MONUMENT: STANDARD HARRISON

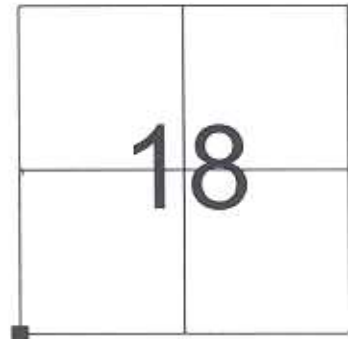
JUNEAU COUNTY COORDINATES  
NORTHING: 148,979.68  
EASTING: 400,510.89

■ = CORNER MONUMENT RESTORED

BASIS FOR MONUMENT LOCATION  
(USE REVERSE SIDE IF NECESSARY)

SHOW INFO SUCH AS: HISTORY OF CORNER, WITH REFERENCE TO VOLUME AND PAGE DATES, SURVEYOR, EXACT DESCRIPTION OF MONUMENT PLACED OR FOUND, IF LOCATION COMPUTED, BY TAPED OR EDM TRAVERSE, LANDOWNER REMARKS, ETC.

STANDARD HARRISON MONUMENT FOUND AS PER MONROE COUNTY TIE SHEET DATED 9/02/1994 BY GARY DECHANT.



LOCATION

## LEGEND

- = STANDARD HARRISON MONUMENT
- = 3/4" X 24" IRON ROD SET
- TREE TIES ARE FOUND 20P NAILS
- AZIMUTHS ARE MAGNETIC

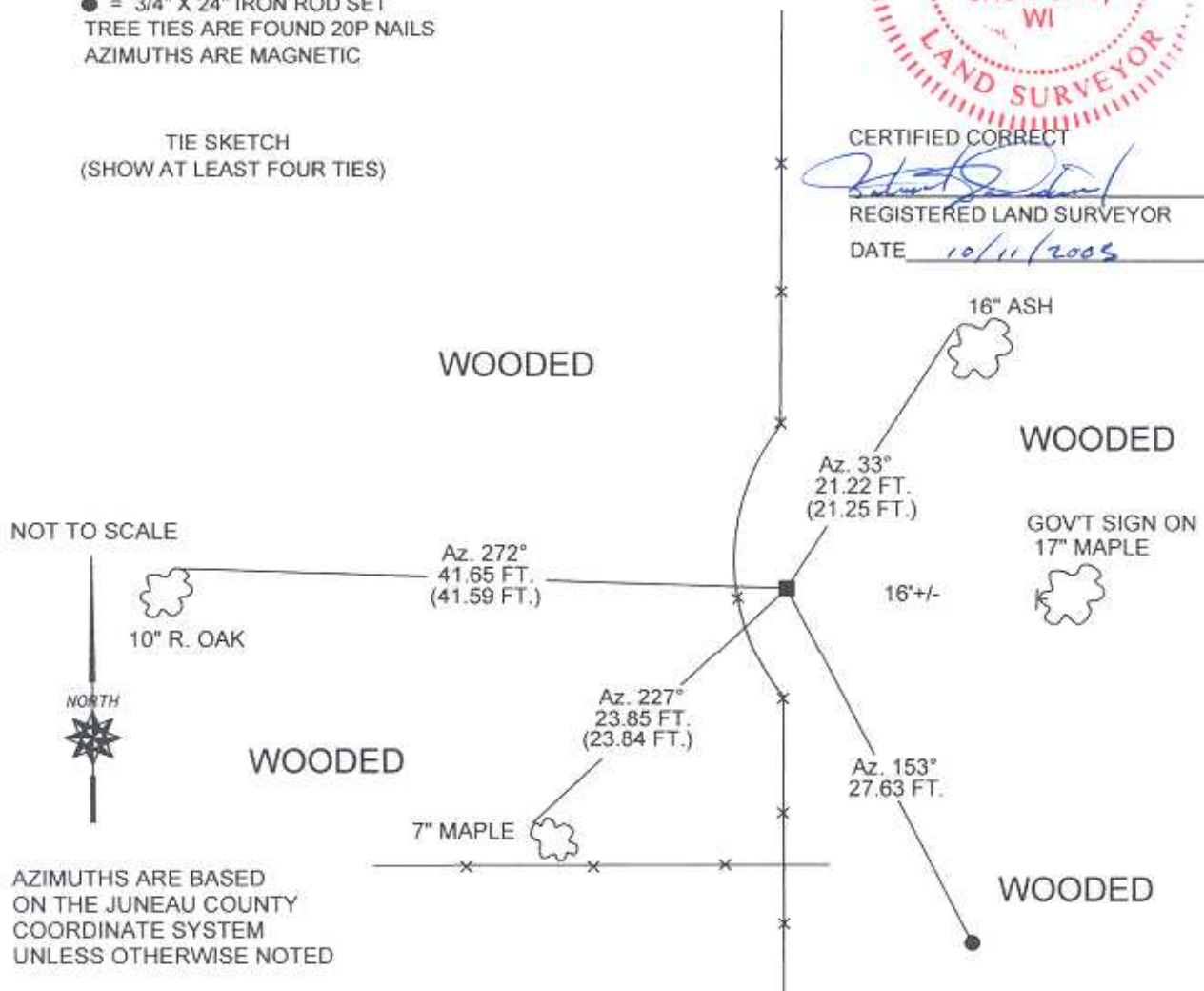
TIE SKETCH  
(SHOW AT LEAST FOUR TIES)



CERTIFIED CORRECT

*Patrick J. Dederich*  
REGISTERED LAND SURVEYOR

DATE 10/11/2005



CERTIFICATE

CERTIFIED LAND CORNER

No. 61

41501130000

I, Gary L. Dechant, do hereby certify that on the 31<sup>st</sup> day of AUGUST 1994, I found (evidence) (~~no evidence~~) of the SE Corner corner of Sec. 13, T15 N, R 1 E Fourth Principal Meridian, and I re-established said corner according to the Wisconsin Statutes as shown and described hereon.

Dated this 2nd day of Sept. 1994.

Gary L. Dechant

R.L.S. 1744  
Title

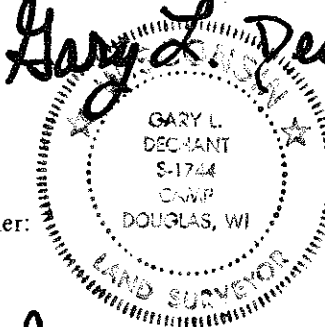
History of corner establishment since Original Government Survey

No known history since the original government survey.

Description of corner evidence found:

Found remains of old fence corner and accepted as the corner. Fits other evidence in the section 13 very well.

Gary L. Dechant



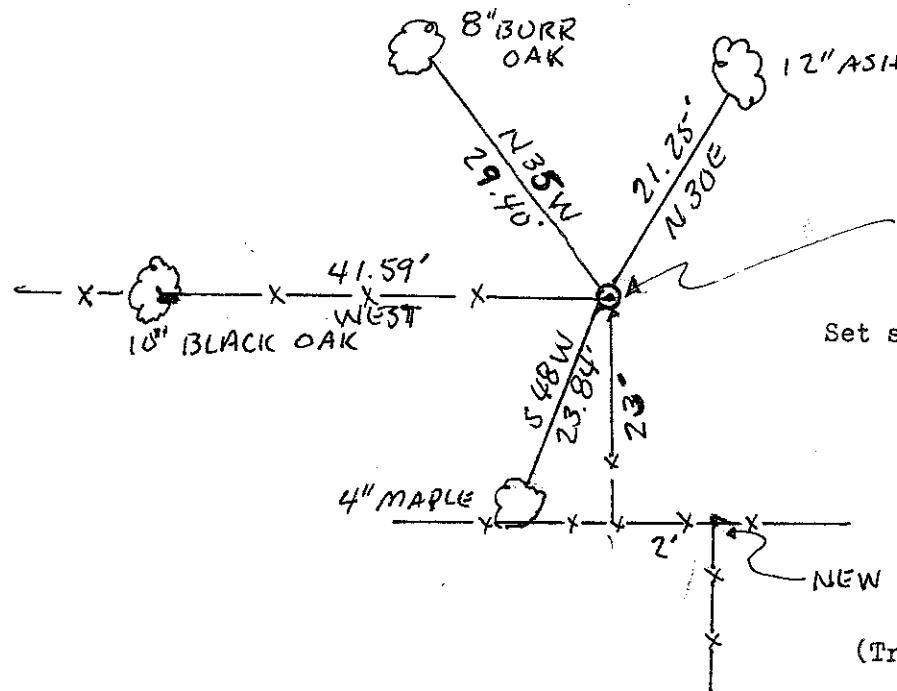
Sept 2, 1994

Description of corner and witness monuments, references and accessories used to perpetuate the original or re-established location of this corner:

Witnesses to corner location:

David E. Madison

Gary L. Dechant



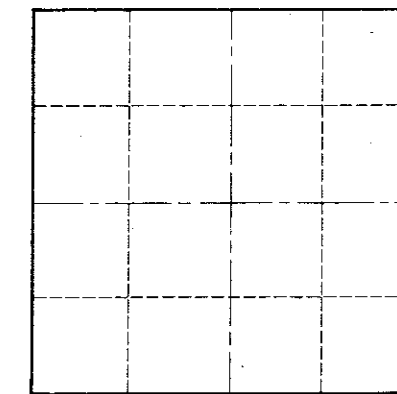
SET HARRISON MONUMENT AT OLD FENCE CORNER

Set survey sign 1' north.

NEW FENCE CORNER

(Trees double blazed with 20 nail set)

Section 13



O = LOCATION CORNER

T 15 N R 1 E

WISCONSIN

COUNTY SURVEYOR FORM NO. 1

SURVEY CONTROL ORDER

Horizontal	_____
Vertical	_____

WISCONSIN COORDINATE SYSTEM

Corner	East (X)	North (Y)	Elevation (Z)	Zone
Control Sta. Name				

City, Village or Town CICENDALE

County of MONROE