

JUNEAU COUNTY SURVEY MONUMENT RECORD

CORNER NO. 34
SECTION 7
TOWN 15N.
RANGE 2E.

TYPE OF MONUMENT: STANDARD HARRISON

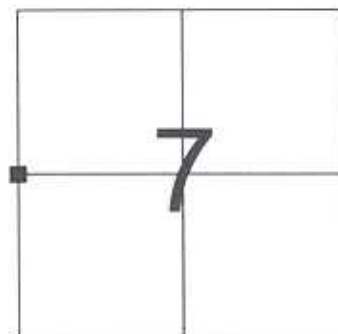
JUNEAU COUNTY COORDINATES
NORTHING: 156,883.27
EASTING: 400,554.83

■ = CORNER MONUMENT RESTORED

BASIS FOR MONUMENT LOCATION
(USE REVERSE SIDE IF NECESSARY)

SHOW INFO SUCH AS: HISTORY OF CORNER, WITH REFERENCE TO VOLUME AND PAGE DATES, SURVEYOR; EXACT DESCRIPTION OF MONUMENT PLACED OR FOUND, IF LOCATION COMPUTED, BY TAPED OR EDM TRAVERSE; LANDOWNER REMARKS, ETC.

STANDARD HARRISON MONUMENT FOUND AS PER TIE SHEET DATED 2/15/1988 BY JAMES CARROLL.



LOCATION

LEGEND

- = STANDARD HARRISON MONUMENT FOUND
 - = 3/4" X 24" IRON ROD SET
 - = 1" DIAMETER IRON PIPE FOUND
- AZIMUTHS ARE MAGNETIC
TREE TIES ARE FOUND RAILROAD SPIKES



CERTIFIED CORRECT

Patrick J. Dederich
REGISTERED LAND SURVEYOR
DATE 9/18/2005

TIE SKETCH
(SHOW AT LEAST FOUR TIES)

FIELD

FIELD

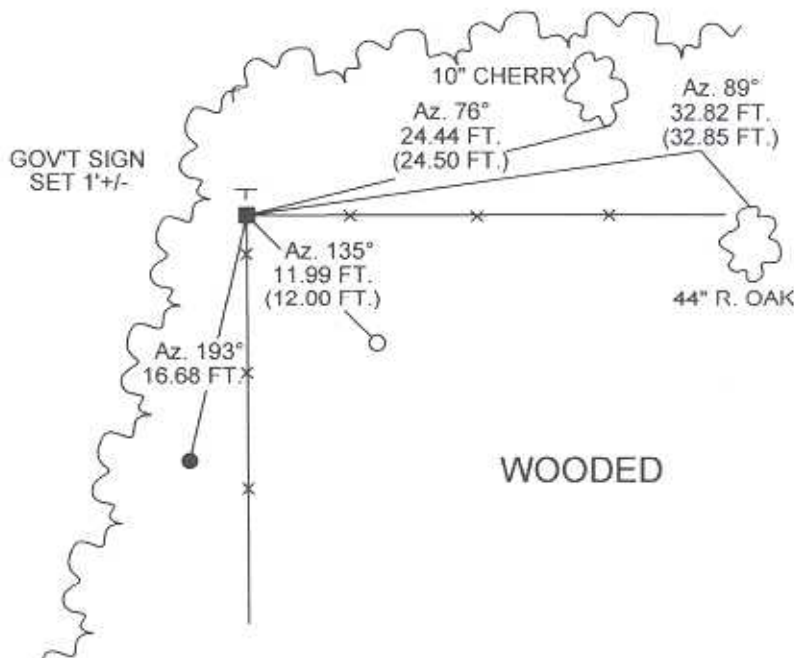
NOT TO SCALE



FIELD

WOODED

AZIMUTHS ARE BASED ON THE JUNEAU COUNTY COORDINATE SYSTEM UNLESS OTHERWISE NOTED



JUNEAU COUNTY
Survey Monument Record

TYPE OF MONUMENT: MONROE CO. HARRISON

STATE PLANE COORDINATES: N _____

E _____

ELEVATION — M.S.L. DATUM: _____

THETA ANGLE: _____

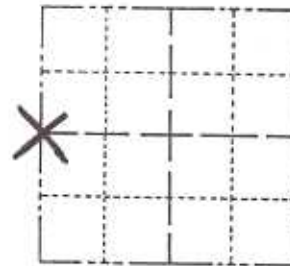
FIELD BOOK: _____ PAGE _____

CORNER NO. 34

SECTION 7

TOWN 15 N

RANGE 2 E



LOCATION
 (Indicated by 'X')

SEAL:

BASIS FOR MONUMENT LOCATION

(Use reverse side if necessary)

Show info such as: History of corner, with reference to Vol. and pg, dates, surveyor; exact description of monument replaced; if location computed, by taped or EDM traverse; landowner remarks, etc.

Accepted as the true location for this corner.

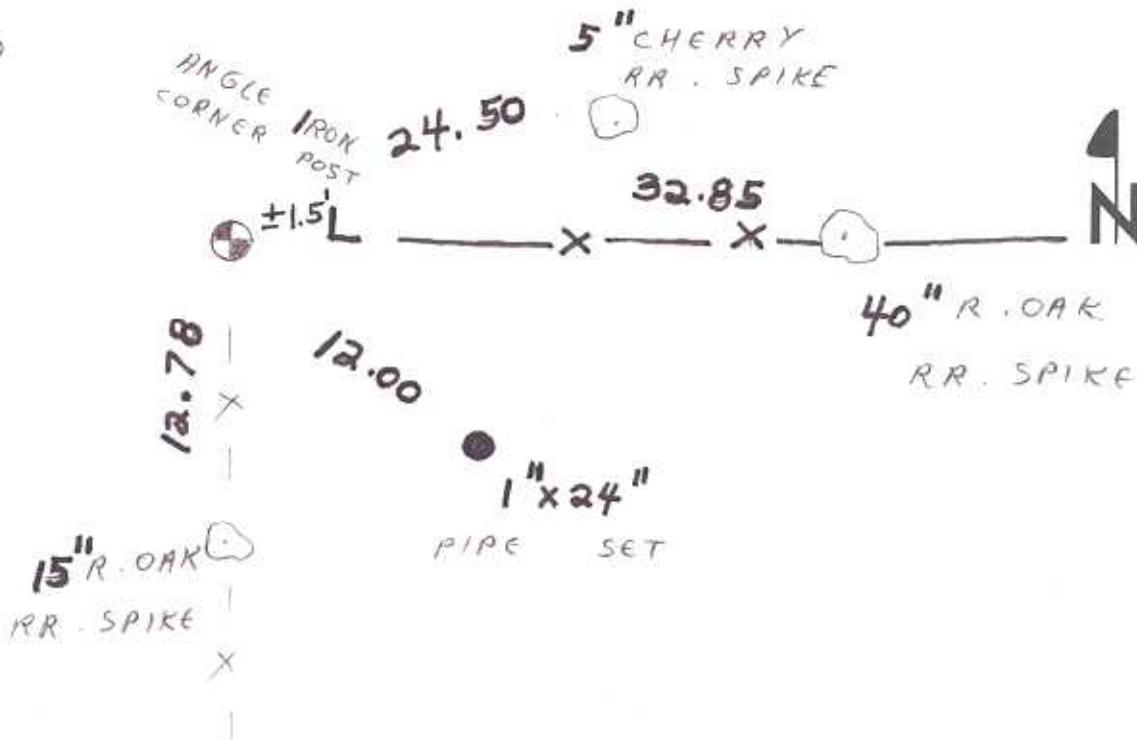


CERTIFIED CORRECT:

James J. Carroll
 Registered Land Surveyor
 DATE: 2/15/88

TIE SKETCH

(Show at least four ties)



CERTIFICATE

CERTIFIED LAND CORNER

No. 40

4150122000

I, Harley A. Sime, do hereby certify that on the 10th day of December 19 79, I found (evidence) ~~found~~ of the East 1/4 corner of Section 12, T 15 N, R 1 E, Fourth Principal Meridian, and I re-established said corner according to the Wisconsin Statutes as shown and described hereon.

History of original corner establishment:

No known history since the original government survey.

Description of corner evidence found:

R. Hayden on Dec. 4, 1979 accepted fence corner as best available evidence and set an iron bar. Replaced iron bar with Harrison Monument on Dec. 10, 1979 by Dechant and Tormoen.

Dated this 30th day of Dec. 19 80.

Approved: HARLEY A. SIME
MONROE CO. SURVEYOR
Title

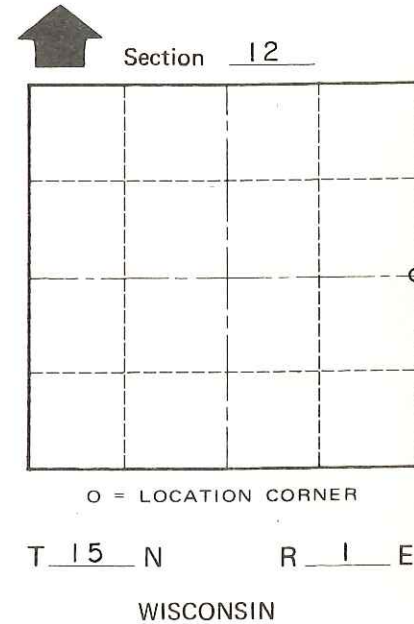
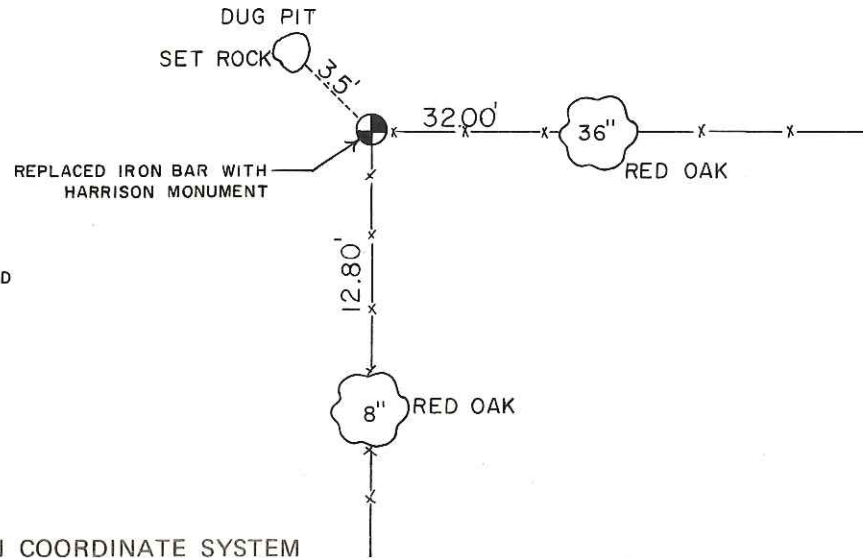
COUNTY SURVEYOR FORM NO. 1

Description of corner and witness monuments, references and accessories used to perpetuate the original or re-established location of this corner:

Witnesses to corner location:

Dechant
Tormoen

NOTE: ALL TREES DOUBLE BLAZED WITH NAIL & CAPS SET



SURVEY CONTROL ORDER

Horizontal _____
Vertical _____

WISCONSIN COORDINATE SYSTEM

Corner	East (X)	North (Y)	Elevation (Z)	Zone
Control Sta. Name				

_____ or Town Glendale

County of Monroe