

41501082000

I, Gary L. Dechant, do hereby certify that on the 13th day of November 1990, I found (evidence) ~~(no evidence)~~ of the W/4 corner of Section 9, T15 N, R1 E Fourth Principal Meridian, and I re-established said corner according to the Wisconsin Statutes as shown and described hereon.

Dated this 14th day of Nov. 1990.

Gary L. Dechant  
Registered Land Surveyor- S-1744  
Title

History of corner establishment since Original Government Survey

No known history since the original government survey.

Description of corner evidence found:

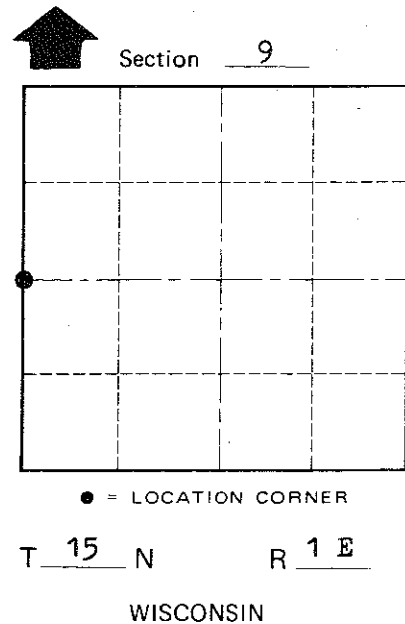
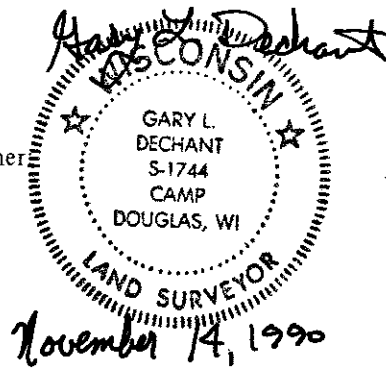
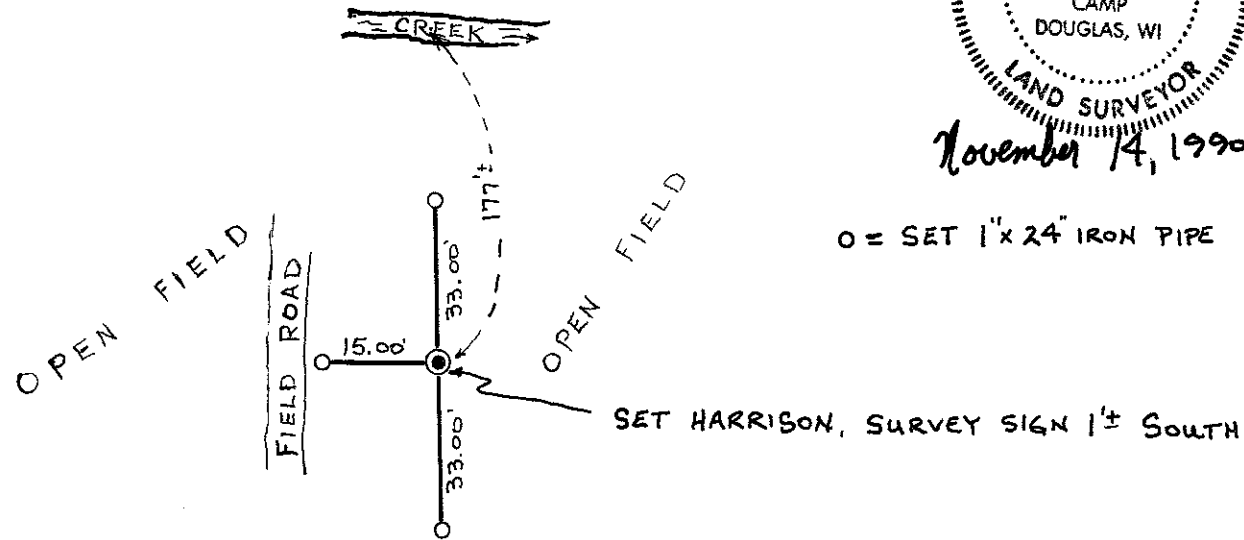
Set W/4 corner in occupied N-S line and at a doubled distance between the NW corner and NW corner of SW/4-NW/4 of Section 9. This location is very close to being a straight line between Section corners. The original government survey calls for creek 5 chains (330') north of corner. It appears the creek was moved by man-made means as it is very straight. The present creek is 177'+ north of the re-established W/4 corner.

Description of corner and witness monuments, references and accessories used to perpetuate the original or re-established location of this corner

Witnesses to corner location:

David E. Madison

Gary L. Dechant



COUNTY SURVEYOR FORM NO. 1

SURVEY CONTROL ORDER

Horizontal	_____
Vertical	_____

WISCONSIN COORDINATE SYSTEM

Corner	East (X)	North (Y)	Elevation (Z)	Zone
Control Sta. Name				

~~City, Village~~ Town Glendale  
County of Monroe