

**U.S. PUBLIC LAND CORNER
MAINTENANCE**

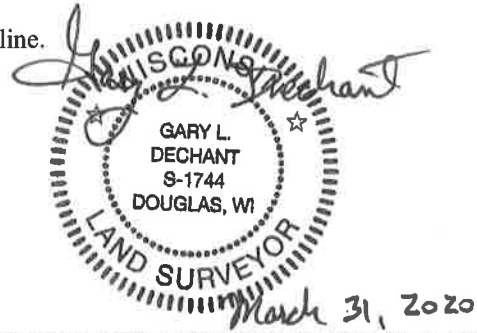
52

Corner ID: N1/4 Sec. 18, T15N-R1E
41501070020

<u>DATE</u>	<u>CREW</u>	<u>MONUMENT INFO</u>
March 30, 2020	Zachariah P. Dechant Gary L. Dechant	Existing Harrison, intact, down 1", 4' east of center line of Moccasin Ave, 110' north of driveway 28687 Moccasin

	<u>Compass Bearing</u>	<u>Distance</u>
1) Existing 3/4" round iron bar, place stones around bar	N87E	33.00' (33.03')
2) Set 1"x24" round iron bar, 5' NW of 6" Scotch Pine in lawn	S59E	54.62'
3) Existing 3/4" hexagon bar, place stones around bar	S86W	30.24' (30.2')
4) Set 3/4"x24" round iron bar, down 6", 4' SE of 3" Red Oak	N59W	77.86'

Harrison and reference markers 2 & 4 set on straight line.



41501070020

I, William C. Jung, do hereby certify that on the 7th day of September 19 82, I found (evidence) ~~(no evidence)~~ of the North 1/4 corner of Section 18, T 15 N, R 1 E Fourth Principal Meridian, and I re-established said corner according to the Wisconsin Statutes as shown and described hereon.

Dated this 26th day of Jan. 19 83.

William C. Jung

Deputy County Surveyor
Title

History of corner establishment since Original Government Survey

In a June, 1975 survey, Harley Sime shows that a 3/4" iron bar was set at the corner.

Description of corner evidence found:

I found Sime's iron bar, removed it and replaced it with a Harrison marker. In doing so I accepted the occupied corner as the best available evidence of the original government corner. This location is only about 5.5' off line between the section corners, certainly acceptable results from equipment and methods of years ago.



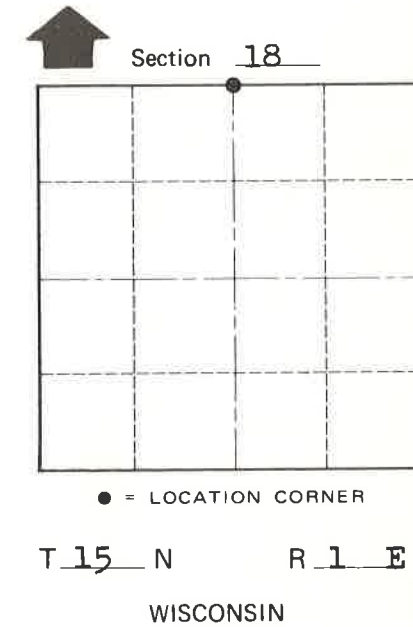
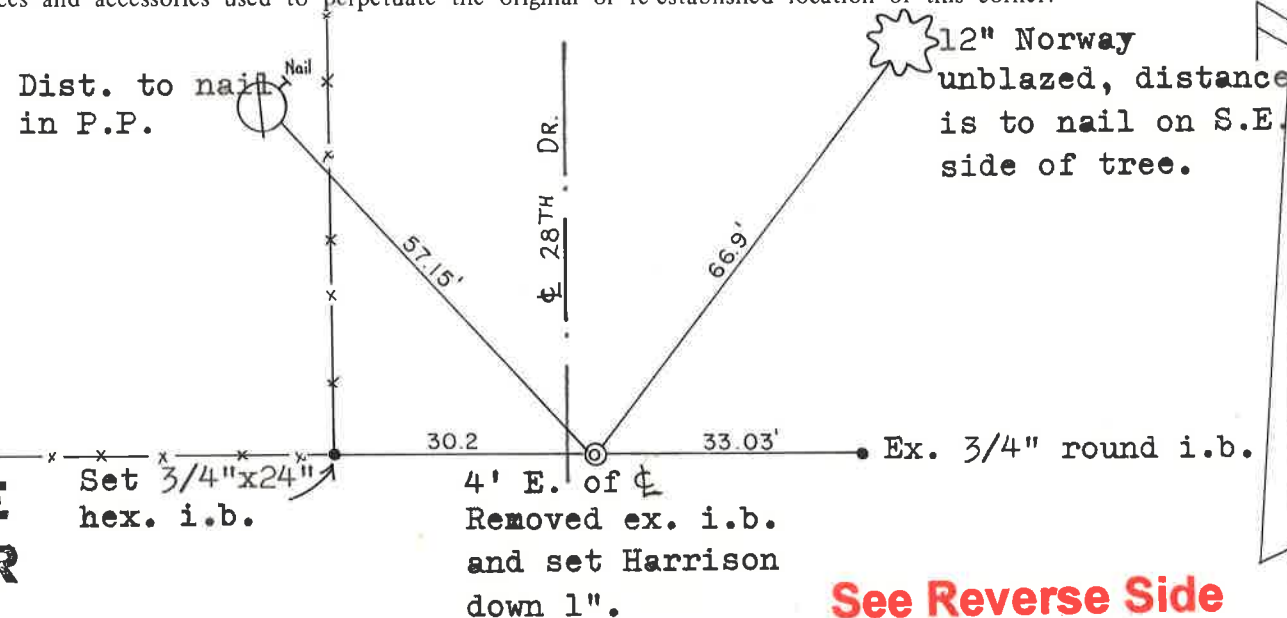
COUNTY SURVEYOR FORM NO. 1

Description of corner and witness monuments, references and accessories used to perpetuate the original or re-established location of this corner:

Witnesses to corner location:

William C. Jung

Melvin Pliner



Approved: **HARLEY A. SIME**
MONROE CO. SURVEYOR

See Reverse Side For Maintenance

SURVEY CONTROL ORDER

Horizontal	_____
Vertical	_____

WISCONSIN COORDINATE SYSTEM

Corner	East (X)	North (Y)	Elevation (Z)	Zone
Control Sta. Name				

City, Village or Town of Glendale

County of Monroe