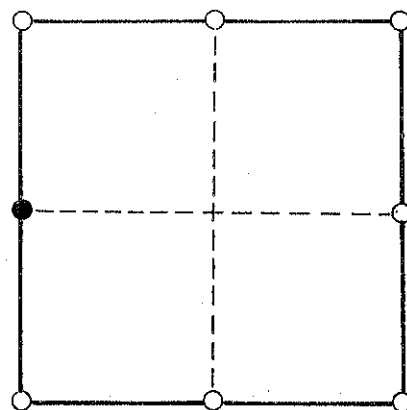


41501052000

CERTIFIED LAND CORNER

I do hereby certify that on the 23rd day of February, 2006, I found (no evidence) of the W/4 corner of Section 4, T 15 N, R 1 E W, Fourth Principal Meridian, and I re-established said corner according to the Wisconsin Statutes as shown and described hereon.

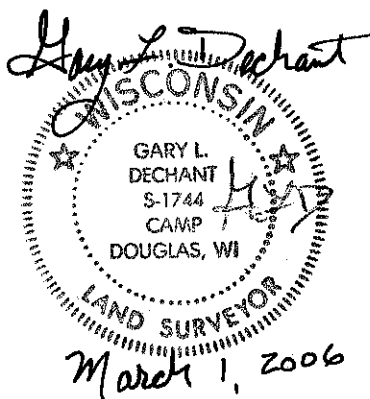
SECTION 4



● = CORNER LOCATION

T 15 N R 1 E W

TOWN OF: Glendale



Witnesses to corner location:

Zachariah P. Dechant

Gary L. Dechant

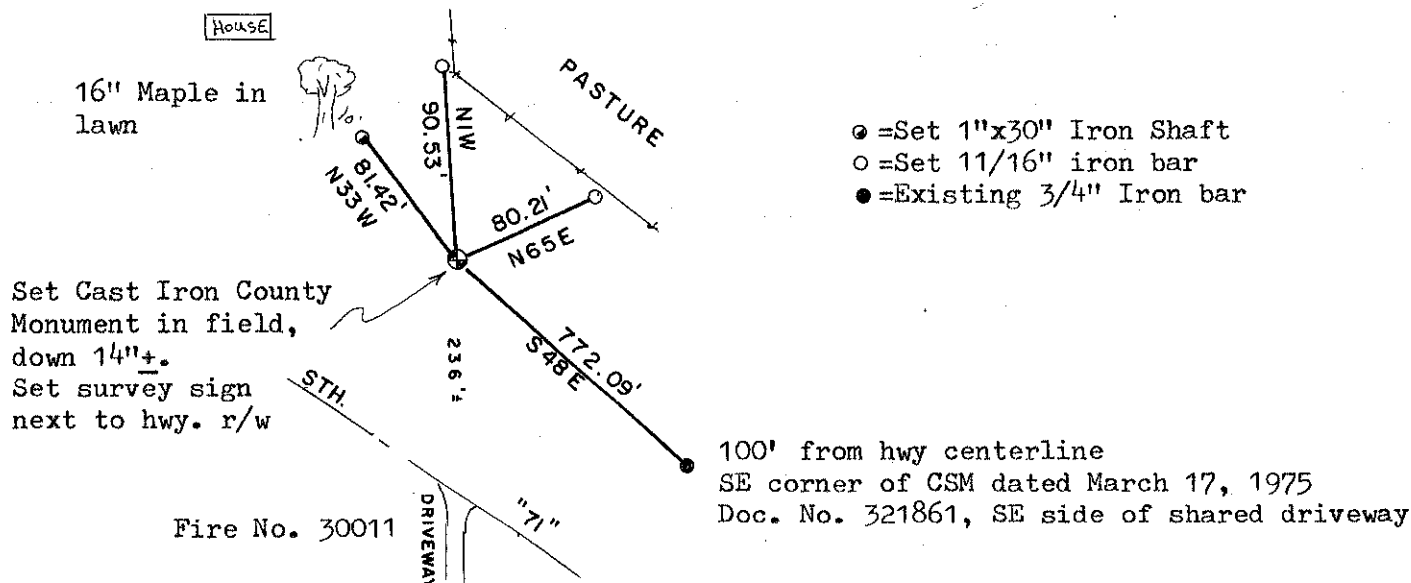
HISTORY OF CORNER:

Duane Marten shows an iron here in his survey of March 17, 1975 on CSM Doc. No. 321861.

DESCRIPTION OF CORNER EVIDENCE FOUND:

Marten's corner was destroyed, plowed out. Reset corner from existing 3/4" iron bars found in his certified survey map Doc. No. 321861. Fits occupied fence line south of hwy "71" very well. It fits closely to prorated distances between section corners.

DESCRIPTION OF CORNER AND WITNESS MARKERS:



Fire No. 30011

11/2