

28

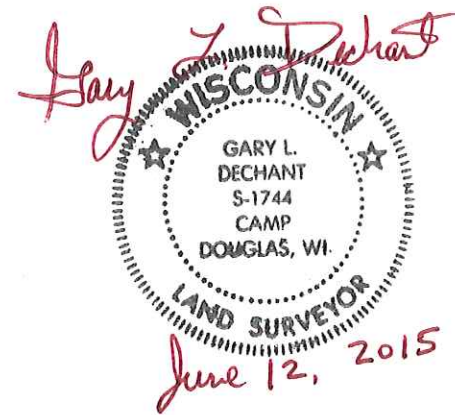
**U.S. PUBLIC LAND CORNER
MAINTENANCE**

**Corner ID : S1/4 Sec.4, T15N-R1E
41501040020**

<u>DATE</u>	<u>CREW</u>	<u>MONUMENT TYPE</u> -----
June 12, 2015	Zachariah P. Dechant Gary L. Dechant	Harrison monument intact at fence corner

References:

	<u>Bearing</u>	<u>Distance</u>
1) Set 3/4"x24" round iron bar at NE side of 2'x3' flat rock	N77E	13.23'
2) Set 3/4"x24" round iron bar on north side of 3'x3' boulder	S15E	28.68'
3) Set 3/4"x24" round iron bar on east side of 1'x1' stone	N81W	35.15'
4) Set 3/4"x24" round iron bar on SE side of 2'x4' boulder	N16W	24.91'



41501040020

I, William C. Jung, do hereby certify that on the 18th day of June 1979, I found (evidence) ~~(no evidence)~~ of the North 1/4 corner of Section 9, T 15 N, R 1 E Fourth Principal Meridian, and I re-established said corner according to the Wisconsin Statutes as shown and described hereon.

Dated this 13th day of Feb. 1981.

William C. Jung

William C. Jung, R.L.S. 1323
Title

History of corner establishment since Original Government Survey

Marten set an iron bar at the occupied corner in 1974. Gary Sime used this corner in the summer of 1976 and February of 1977.

Description of corner evidence found:

Found the corner of record, removed the iron bar at the occupied corner, and set a Harrison marker. Accepted the fence corner as the best available evidence of the original government corner. This point fits an old stump to the Southeast which I believe is an original bearing tree.

See Reverse Side For Maintenance

Approved: **HARLEY A. SIME**
MONROE CO. SURVEYOR

Description of corner and witness monuments, references and accessories used to perpetuate the original or re-established location of this corner:

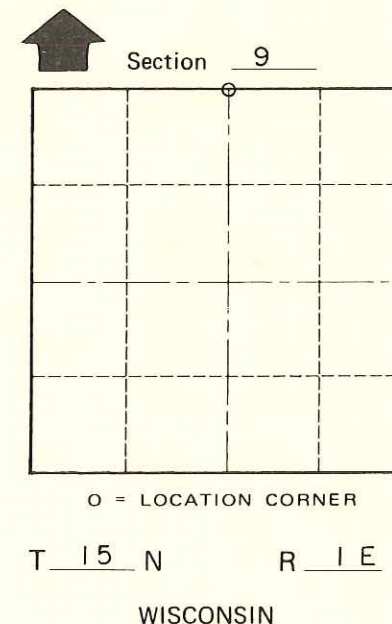
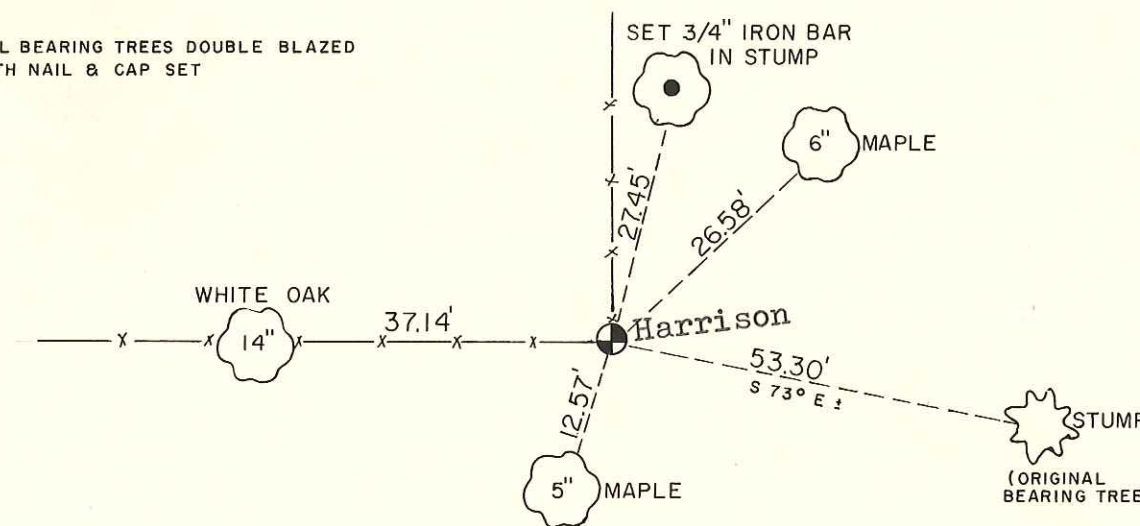
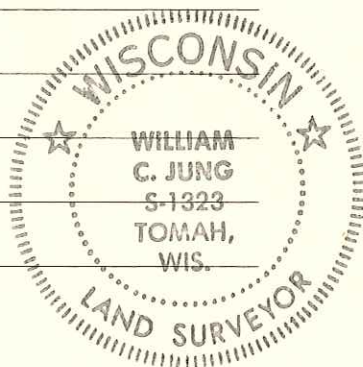
NOTE: ALL BEARING TREES DOUBLE BLAZED WITH NAIL & CAP SET

Witnesses to corner location:

Jung

Pietz

Webb



SURVEY CONTROL ORDER

Horizontal	_____
Vertical	_____

WISCONSIN COORDINATE SYSTEM

Corner	East (X)	North (Y)	Elevation (Z)	Zone
Control Sta. Name				

_____ or Town Glendale
County of Monroe

COUNTY SURVEYOR FORM NO. 1