

CERTIFICATE

CERTIFIED LAND CORNER

No. 25

41501030000

I, Harley A. Sime, do hereby certify that on the 28th day of July 1981, I found SE (evidence) of the Section 3 corner of T 15 N, R 1 E Fourth Principal Meridian, and I re-established said corner according to the Wisconsin Statutes as shown and described hereon.

Dated this 7th day of August 1981.

Harley A. Sime, R.L.S. 355
County Surveyor
Title

History of corner establishment since Original Government Survey

No known recorded history since the original government survey.

Description of corner evidence found:

Accepted fence corner as best available evidence. Fits other field evidence well.

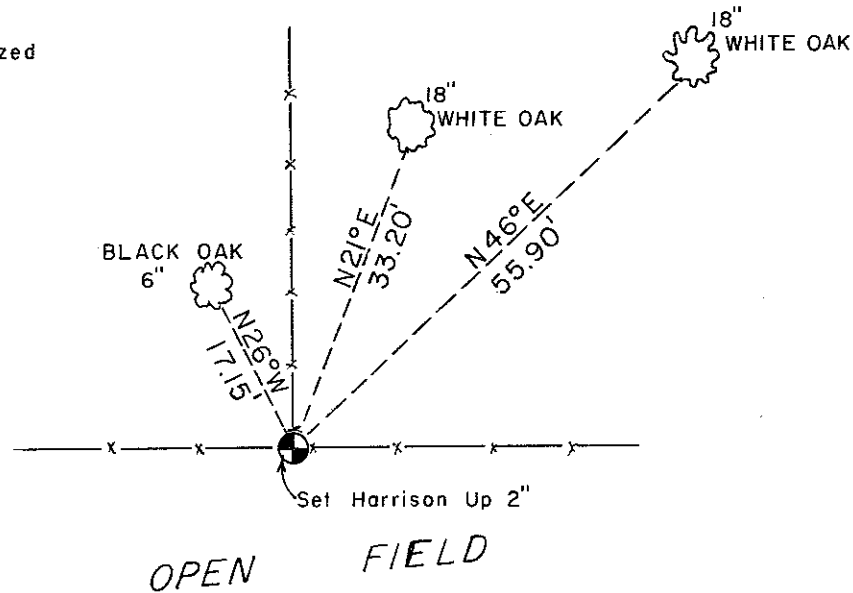
COUNTY SURVEYOR FORM NO. 1

Description of corner and witness monuments, references and accessories used to perpetuate the original or re-established location of this corner:

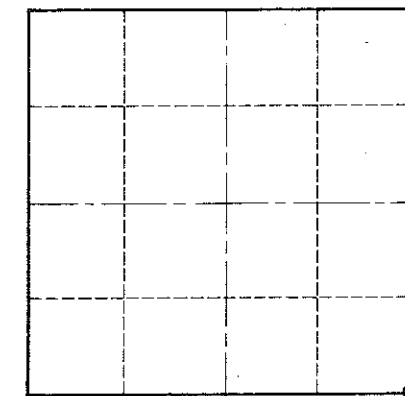
Witnesses to corner location:

G. Dechant
B. Meyer

Trees Double Blazed
With Nails Set



Section 3



O = LOCATION CORNER
T 15 N R 1 E
WISCONSIN

Approved: **HARLEY A. SIME**
MONROE CO. SURVEYOR

SURVEY CONTROL ORDER

Horizontal	_____
Vertical	_____

WISCONSIN COORDINATE SYSTEM

Corner	East (X)	North (Y)	Elevation (Z)	Zone
Control Sta. Name				

~~City Village or~~ Town Glendale
County of Monroe