

U.S. Land Survey Monument Record

Corner No. 41501020020

Section 2
Town 15N
Range 1E
S1/4 Corner

Type of Monument:

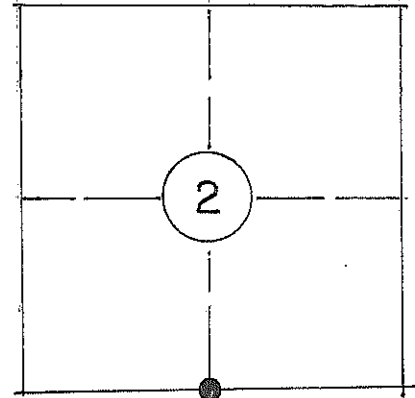
Replaced 1/2" iron bar with Cast Iron TCP Monument in concrete

County Coordinates:

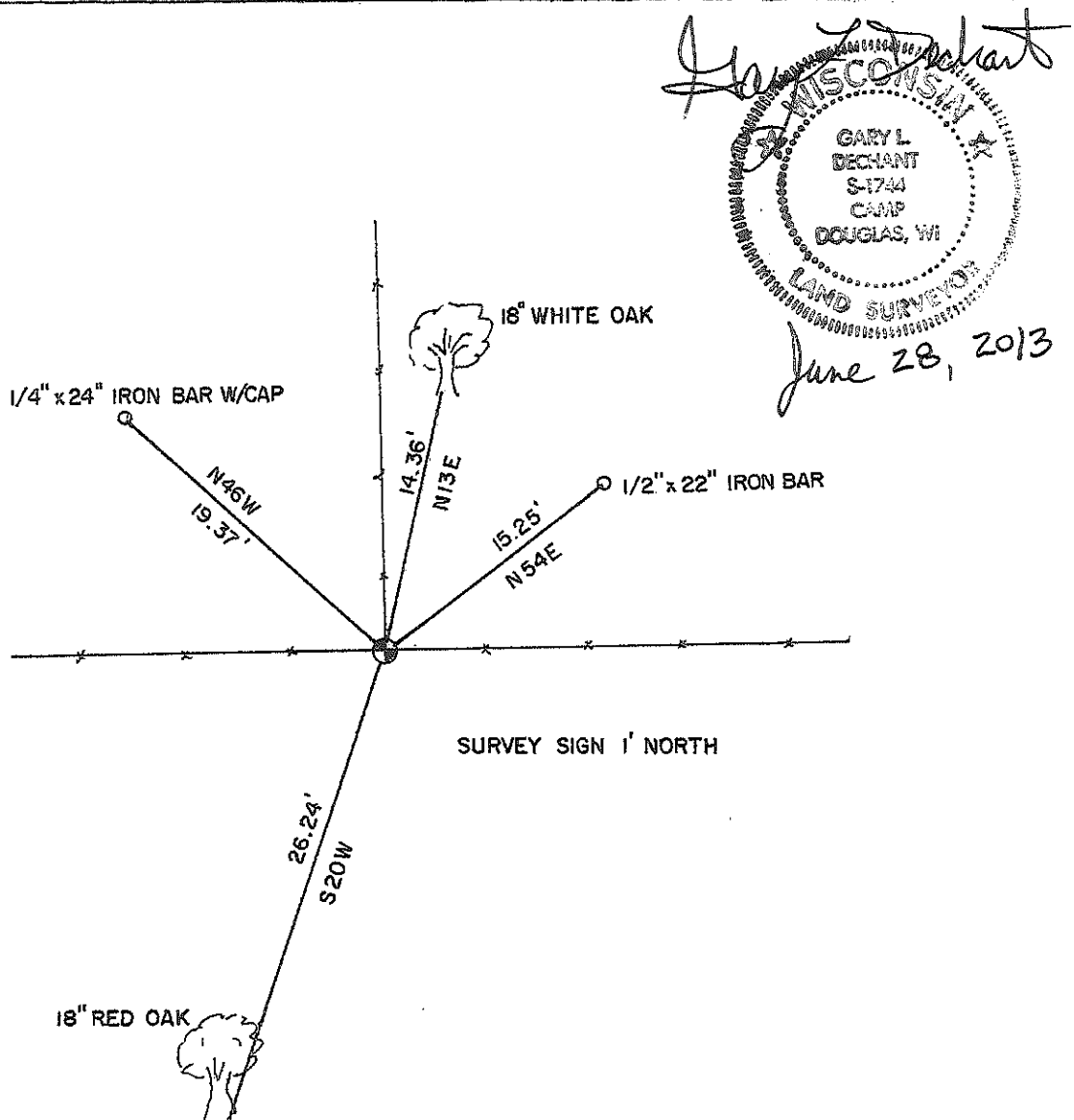
Witnesses: Zachariah P. Dechant

Basis For Monument Location:

(Show info such as history, evidence, testimony, found or method of relocation)



Rodney Maxwell shows he set an iron bar at this corner for a Plat of Survey dated March 2, 1999. I was at this corner in 2009 for a Record of Survey dated Sept. 27. I found Maxwell's iron bar at an occupied fence corner, replaced iron bar with Cast Iron TCP monument and set in concrete with 6' long anchors on Sept. 27, 2009. G. Sime was at this corner at some later date. A tie sheet was not done as there was some discussion as to who was to submit the tie sheet. As none has yet been submitted by anyone, I took it upon myself to do so as it is long overdue.



Zachariah P. Dechant
 WISCONSIN
 GARY L. DECHANT
 S-1744
 CAMP
 DOUGLAS, WI
 LAND SURVEYOR
 June 28, 2013