

# JUNEAU COUNTY SURVEY MONUMENT RECORD

CORNER NO. 14  
SECTION 6  
TOWN 15N.  
RANGE 2E.

TYPE OF MONUMENT: STANDARD HARRISON

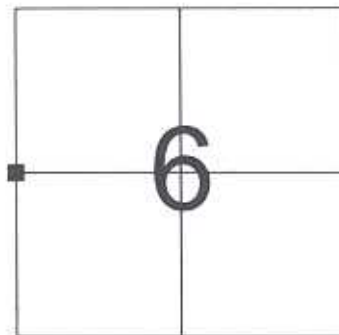
JUNEAU COUNTY COORDINATES  
NORTHING: 162,162.25  
EASTING: 400,607.62

■ = CORNER MONUMENT RESTORED

BASIS FOR MONUMENT LOCATION  
(USE REVERSE SIDE IF NECESSARY)

SHOW INFO SUCH AS: HISTORY OF CORNER, WITH REFERENCE TO VOLUME AND PAGE DATES, SURVEYOR; EXACT DESCRIPTION OF MONUMENT PLACED OR FOUND, IF LOCATION COMPUTED, BY TAPED OR EDM TRAVERSE; LANDOWNER REMARKS, ETC.

STANDARD HARRISON MONUMENT FOUND AS PER TIE SHEET DATED 8/24/1989 BY JAMES CARROLL.



LOCATION

## LEGEND

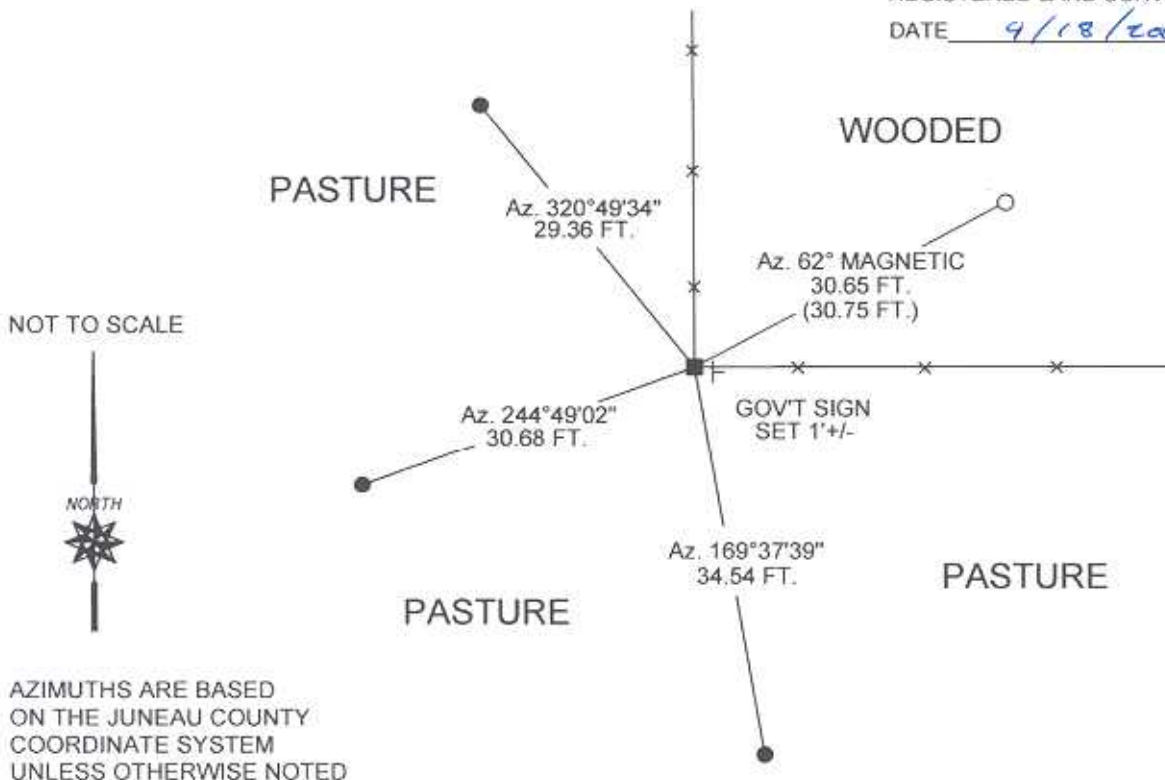
- = STANDARD HARRISON MONUMENT FOUND
- = 3/4" X 24" IRON ROD SET
- = 1" DIAMETER IRON PIPE FOUND



CERTIFIED CORRECT

*Patrick J. Dederich*  
REGISTERED LAND SURVEYOR  
DATE 9/18/2005

TIE SKETCH  
(SHOW AT LEAST FOUR TIES)



JUNEAU COUNTY

CORNER NO. 14  
SECTION 6  
TOWN 15  
RANGE 2

Survey Monument Record

TYPE OF MONUMENT: HARRISON MARKER

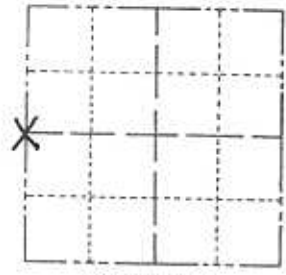
STATE PLANE COORDINATES: N \_\_\_\_\_

E \_\_\_\_\_

ELEVATION — M.S.L. DATUM: \_\_\_\_\_

THETA ANGLE: \_\_\_\_\_

FIELD BOOK: \_\_\_\_\_ PAGE \_\_\_\_\_



LOCATION (Indicated by 'X')

SEAL:



BASIS FOR MONUMENT LOCATION

(Use reverse side if necessary)

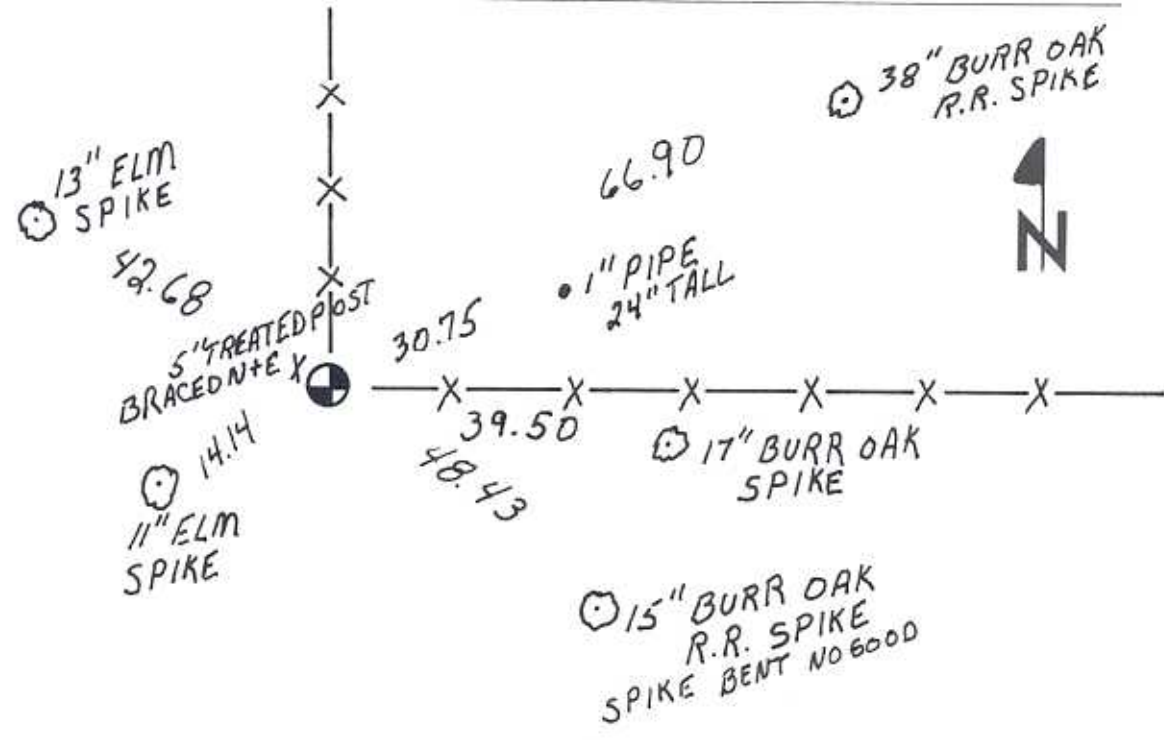
Show info such as: History of corner, with reference to Vol. and pg. dates, surveyor; exact description of monument replaced; if location computed, by taped or EDM traverse; landowner remarks, etc.

Monroe County marker found in place

CERTIFIED CORRECT  
*James J. Carroll*  
Registered Land Surveyor  
DATE: 8-24-89

TIE SKETCH

(Show at least four ties)



41501012000

I, Ronald D. Parish, do hereby certify that on the 26th day of March 1985, I found ~~(evidence)~~ (no evidence) of the E<sup>1</sup>/<sub>4</sub> corner of Section 1, T.15 N, R.1 E Fourth Principal Meridian, and I re-established said corner according to the Wisconsin Statutes as shown and described hereon.

History of corner establishment since Original Government Survey

No known history since the Original Government Survey

Description of corner evidence found:

Found no evidence of the original corner. Set corner on line between the NE corner and the SE corner of the Section and proportioned the distance to the Original Survey distance. The total distance is 1.69 feet shorter than the distance given for the Original Survey. This also fits an old fence line to the East.

Dated this 16th day of April 1985.

Ronald D. Parish

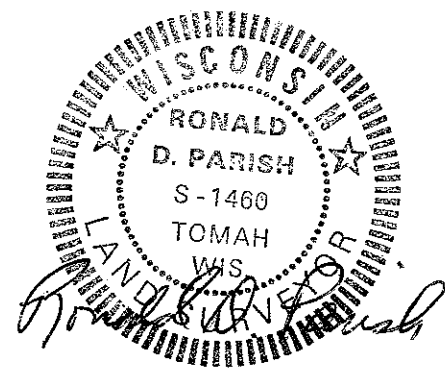
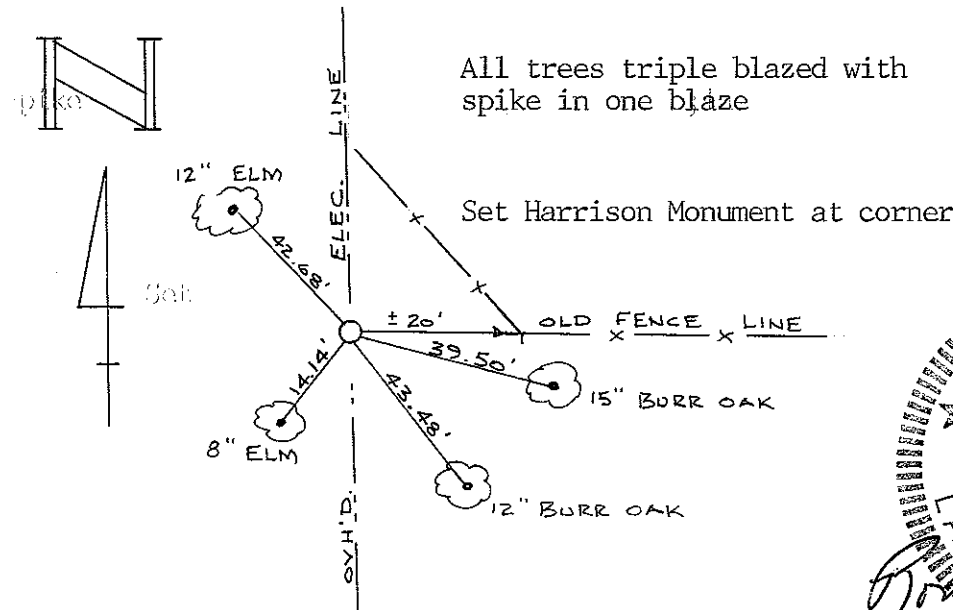
Registered Land Surveyor  
Title

Description of corner and witness monuments, references and accessories used to perpetuate the original or re-established location of this corner:

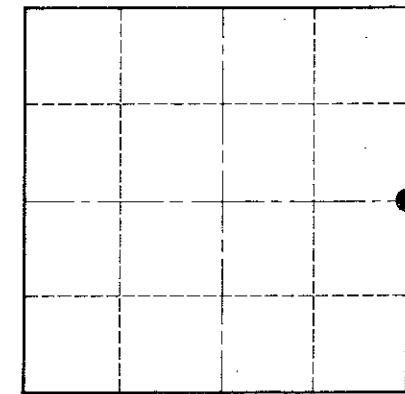
Witnesses to corner location:

Ronald D. Parish

Charles Dade



Section 1



● = LOCATION CORNER  
T.15 N R.1 E  
WISCONSIN

COUNTY SURVEYOR FORM NO. 1

SURVEY CONTROL ORDER

Horizontal	_____
Vertical	_____

WISCONSIN COORDINATE SYSTEM

Corner	East (X)	North (Y)	Elevation (Z)	Zone
Control Sta. Name				

City, Village or Town Glendale

County of Monroe