

# JUNEAU COUNTY SURVEY MONUMENT RECORD

CORNER NO. 21  
SECTION 6  
TOWN 15N.  
RANGE 2E.

TYPE OF MONUMENT: STANDARD HARRISON

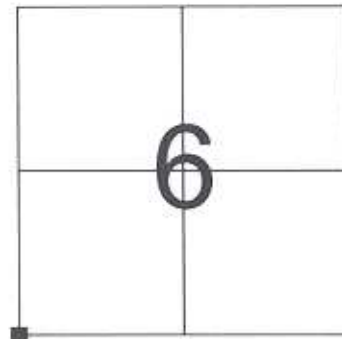
JUNEAU COUNTY COORDINATES  
NORTHING: 159,522.94  
EASTING: 400,562.85

■ = CORNER MONUMENT RESTORED

BASIS FOR MONUMENT LOCATION  
(USE REVERSE SIDE IF NECESSARY)

SHOW INFO SUCH AS: HISTORY OF CORNER, WITH REFERENCE TO VOLUME AND PAGE DATES, SURVEYOR; EXACT DESCRIPTION OF MONUMENT PLACED OR FOUND, IF LOCATION COMPUTED, BY TAPED OR EDM TRAVERSE, LANDOWNER REMARKS, ETC.

STANDARD HARRISON MONUMENT FOUND AS PER TIE SHEET DATED 2/15/1988 BY JAMES CARROLL.



LOCATION

## LEGEND

- = STANDARD HARRISON MONUMENT FOUND
  - = 3/4" X 24" IRON ROD SET
- AZIMUTHS ARE MAGNETIC

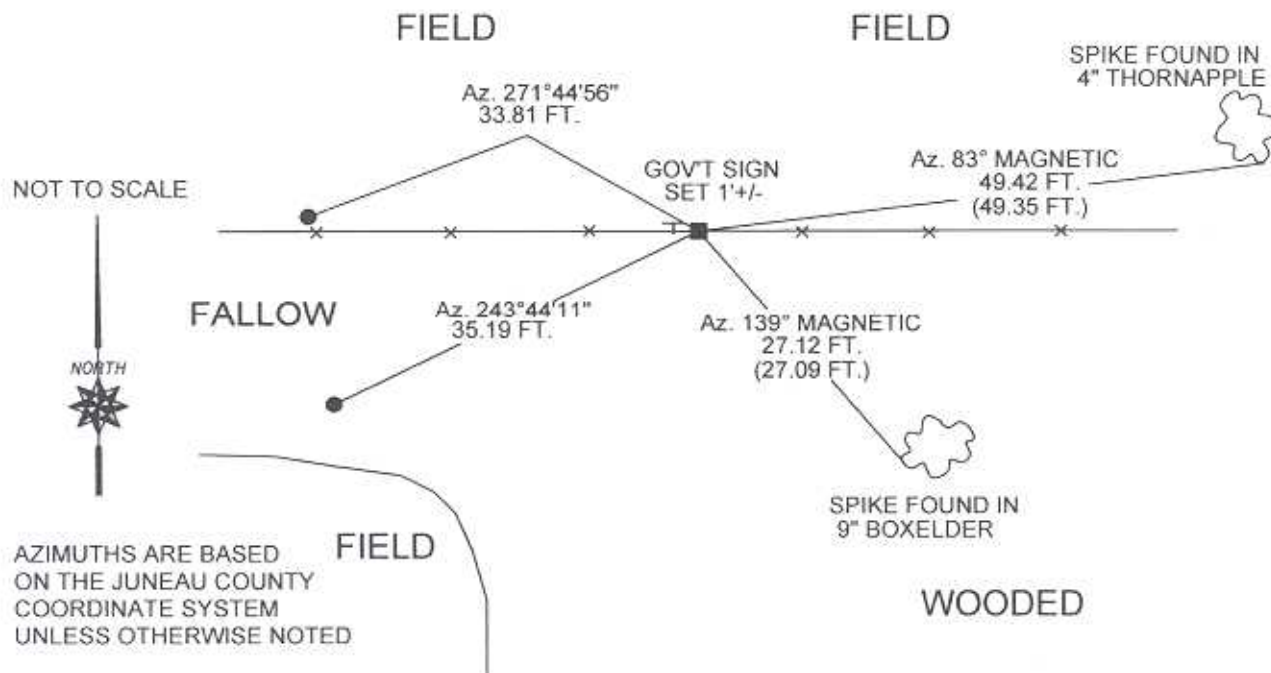


CERTIFIED CORRECT

*Patrick J. Dederich*  
REGISTERED LAND SURVEYOR

DATE 9/18/2005

TIE SKETCH  
(SHOW AT LEAST FOUR TIES)



21

6

15 N

2 E

JUNEAU COUNTY

Survey Monument Record

TYPE OF MONUMENT: MONROE CO. HARRISON

STATE PLANE COORDINATES: N \_\_\_\_\_

E \_\_\_\_\_

ELEVATION — M.S.L. DATUM: \_\_\_\_\_

THETA ANGLE: \_\_\_\_\_

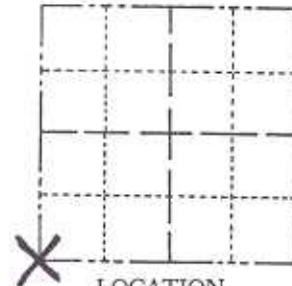
FIELD BOOK: \_\_\_\_\_ PAGE \_\_\_\_\_

CORNER NO. \_\_\_\_\_

SECTION \_\_\_\_\_

TOWN \_\_\_\_\_

RANGE \_\_\_\_\_



LOCATION  
(Indicated by 'X')

SEAL:

BASIS FOR MONUMENT LOCATION

(Use reverse side if necessary)

Show info such as: History of corner, with reference to Vol. and pg. dates, surveyor; exact description of monument replaced; if location computed, by taped or EDM traverse; landowner remarks, etc.

Accepted as the true corner location.



CERTIFIED CORRECT:

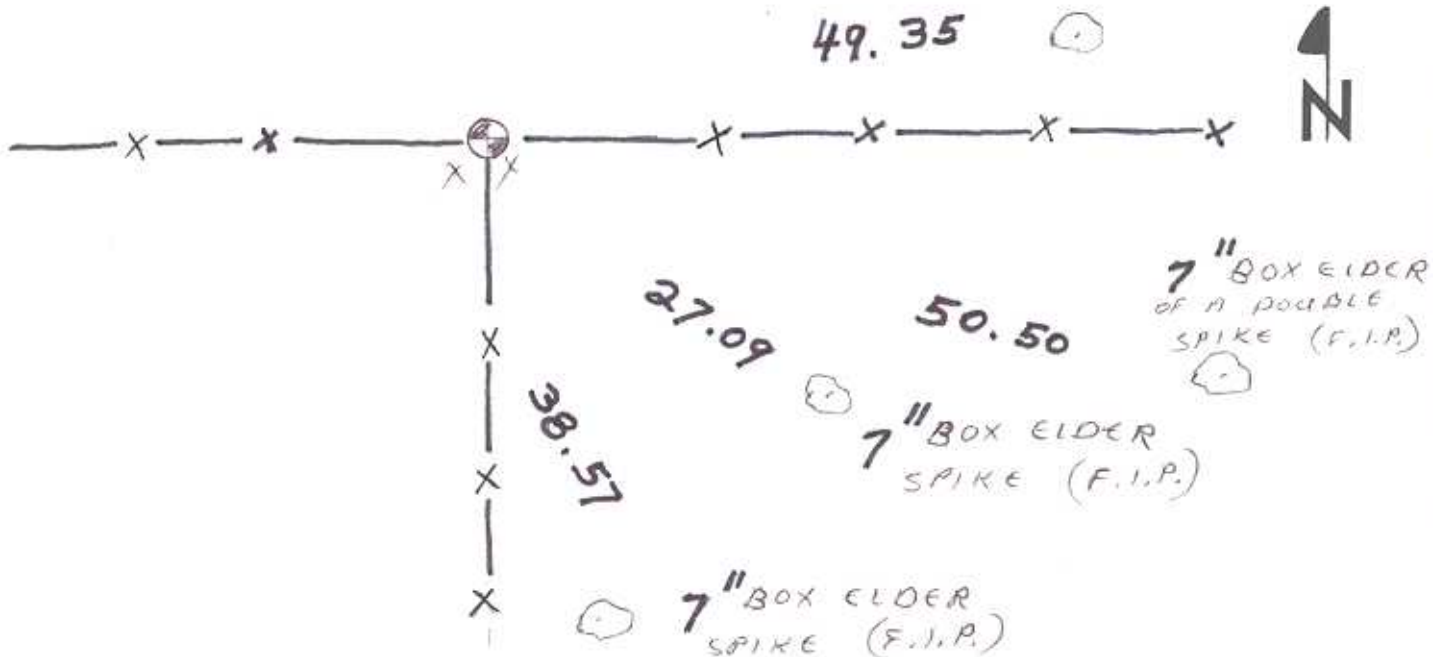
*James J. Carroll*  
Registered Land Surveyor

DATE: 2/15/1988

TIE SKETCH

(Show at least four ties)

3" THORN APPLE SPIKE (F.I.P.)



41501010000

I, Ronald D. Parish, do hereby certify that on the 27th day of March 1985, I found (evidence) (no evidence) of the SE corner of Section 1, T 15 N, R 1 E Fourth Principal Meridian, and I re-established said corner according to the Wisconsin Statutes as shown and described hereon.

Dated this 16th day of April 1985.

Ronald D. Parish

Registered Land Surveyor  
Title

History of corner establishment since Original Government Survey

No known history since the Original Government Survey

Description of corner evidence found:

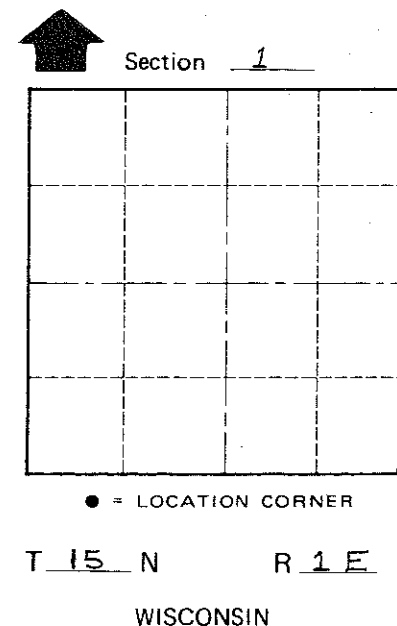
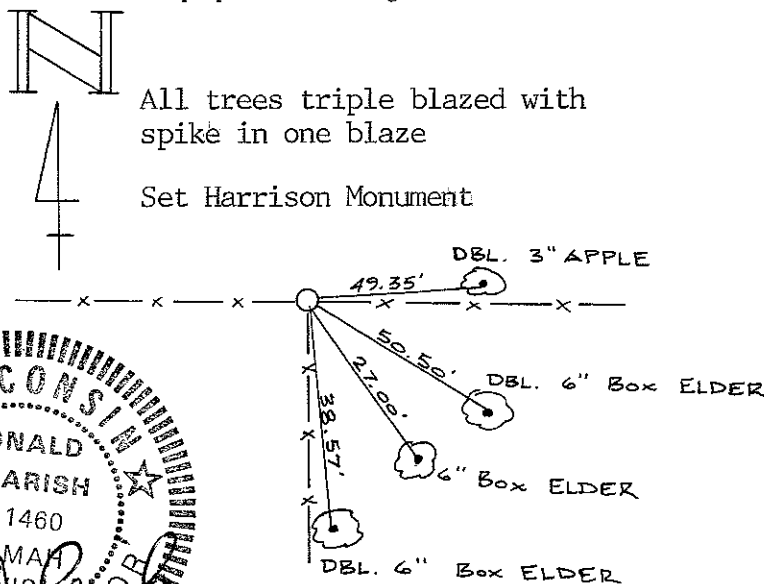
Found no evidence of corner. Set corner at three-way fence corner as best available evidence. This fits the occupation along the east line very well.

Description of corner and witness monuments, references and accessories used to perpetuate the original or re-established location of this corner:

Witnesses to corner location:

Ronald D. Parish

Charles Dade



COUNTY SURVEYOR FORM NO. 1

SURVEY CONTROL ORDER

Horizontal \_\_\_\_\_

Vertical \_\_\_\_\_

WISCONSIN COORDINATE SYSTEM

Corner	East (X)	North (Y)	Elevation (Z)	Zone
Control Sta. Name				

City, Village or Town Glendale

County of Monroe