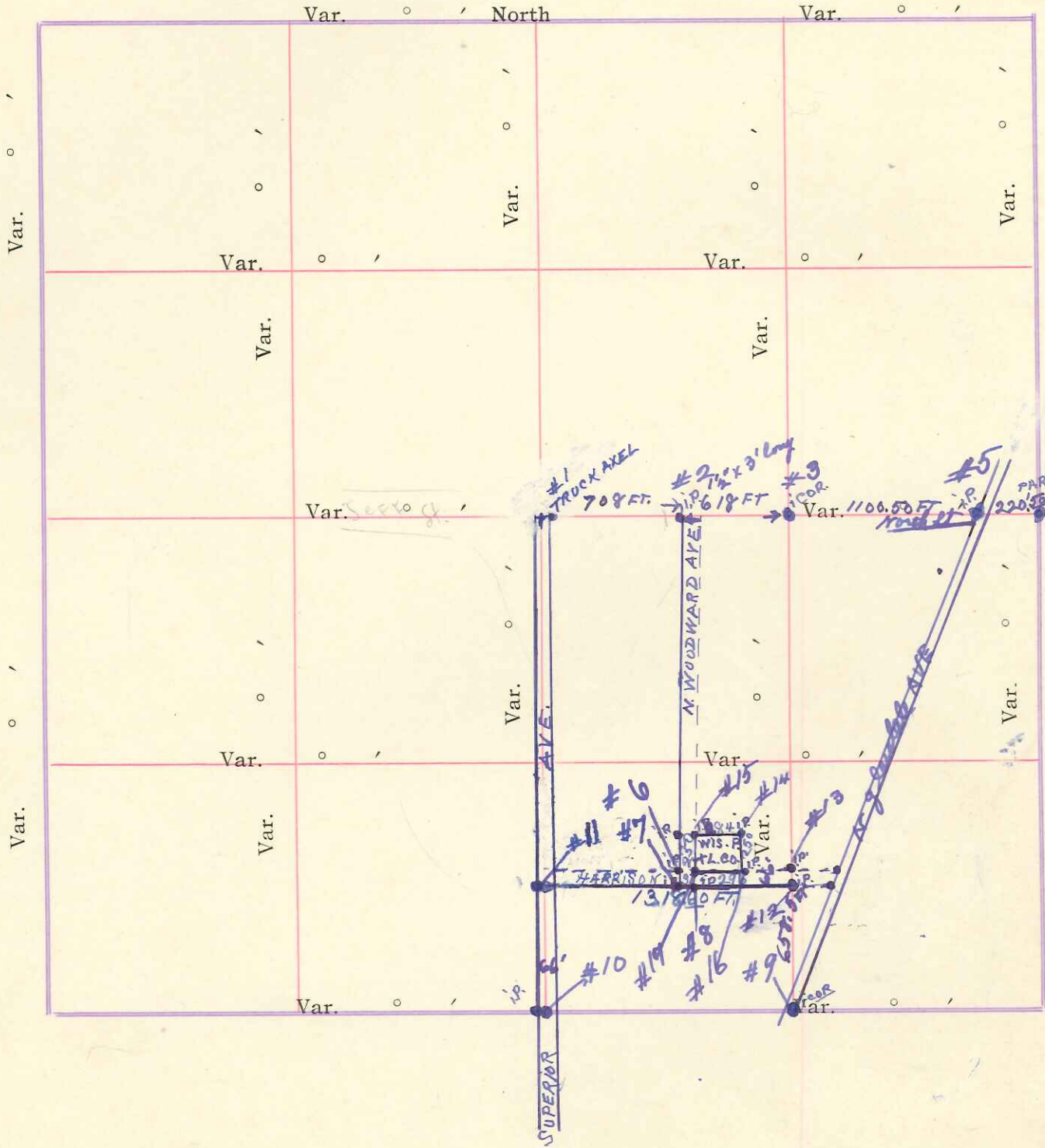


# RECORD OF SURVEY.

Plat of <sup>part of</sup> Section 33, Township 18 North, Range 1 <sup>West</sup> East of Four  
 Principal Meridian, Scale 80 Chains to 6 $\frac{2}{3}$  inches.



Variation of magnetic Needle 5° 10' E.

Surveyed July A. D. 1929, in accordance with  
 the State Laws and Instructions of the Commissioner of General Land Office.

Witness my hand this 24<sup>th</sup> day of July A. D. 1929  
*Henry Schröder*  
 Surveyor.

GOVERN  
 No.  
 1. N. W.  
 2. N. E.  
 3. S. E.  
 4. S. W.  
 5. N. 1/4  
 6. E. 1/4  
 7. S. 1/4  
 8. W. 1/4  
 Subdivi  
 No.  
 1. Center  
 2. NE cor  
 SW cor  
 + 18  
 3. E. 1/4  
 4.  
 5. inter  
 N. 1/4  
 with  
 1/4  
 with N  
 6.  
 7. S. 1/4  
 with  
 S. 1/4  
 + E. 1/4  
 8. Four  
 cor to  
 SW  
 9. S. 1/4  
 with  
 10. S. 1/4  
 with  
 11. S. 1/4  
 with  
 12. inter  
 S. 1/4  
 13. S. 1/4  
 and  
 14. set  
 15. set  
 16. set  
 17. "



# DESCRIPTION

of Section, Quarter Section and Quarter Quarter Section Corners

H. C. MILLER CO., MFG. STATIONERS, MILWAUKEE 104702

GOVERNMENT CORNERS		Bearing Trees	In Dia.	Courses they bear	Links Distant	Bearing Trees	In Dia.	Courses they bear	Links Distant
No.									
1.	N. W. Sec. Cor. Identified,								
2.	N. E. Sec. Cor. Identified,								
3.	S. E. Sec. Cor. Identified,								
4.	S. W. Sec. Cor. Identified,								
5.	N. 1/4 Sec. Cor. Identified,								
6.	E. 1/4 Sec. Cor. Identified,								
7.	S. 1/4 Sec. Cor. Identified,								
8.	W. 1/4 Sec. Cor. Identified,								
<b>Subdivision Corners</b>									
No.									
1.	Center 1/4 Sec. Cor. +33 FT. E. SET TRUCK AXEL FOR COR. RICH. SUBD. N.W.								
2.	NE COR RICH. SUBD. SET IRON PIPE FOR COR. NE. SW CORSE NE. SEC 33 + 18' W								
3.	E. 1/4 COR. FOUND ORIG iron cov stake NO BEARINGS FOUND BIG cov part sleigh beam with part laid flat over stake for protection.								
4.	intersection of K. S. & W. line								
5.	intersection N 1/2 Harrison St with W 1/2 K Woodward Ave								
6.	S 1/2 Harrison St intersection								
7.	with W 1/2 Woodward Ave S 1/2 Harrison St								
8.	+ E 1/2 K Woodward Ave								
9.	Found orig iron cov to E. post SW. S. E. Sec 33 + 18' W								
10.	Superior Ave + town utility section = intersection Superior Ave + town								
11.	Superior Ave intersection with S 1/2 Harrison St								
12.	intersection of N 1/2 S Forty line and S 1/2 Harrison St produced								
13.	S 1/2 Harrison St produced S Forty line intersection and S 1/2 Harrison St produced								
14.	set iron pipe 2" x 21" long								
15.	set iron pipe 1 1/4" x 30" long								
16.	set iron pipe 2" x 29" long								
17.	" " " 2" x 34" long								

Names of Sworn Assistants

CHAINMEN	FLAGMEN	AXEMEN
D. C. Purdy	Assistant	For Wisconsin Light Co. & City of Tomah

Recorded this 30th day of May 1930

Henry F. Schroeder Surveyor

of Four

PAR. SLEIGH SHOE 20.50 1/4 COR

nce with

D. 1929

Surveyor.