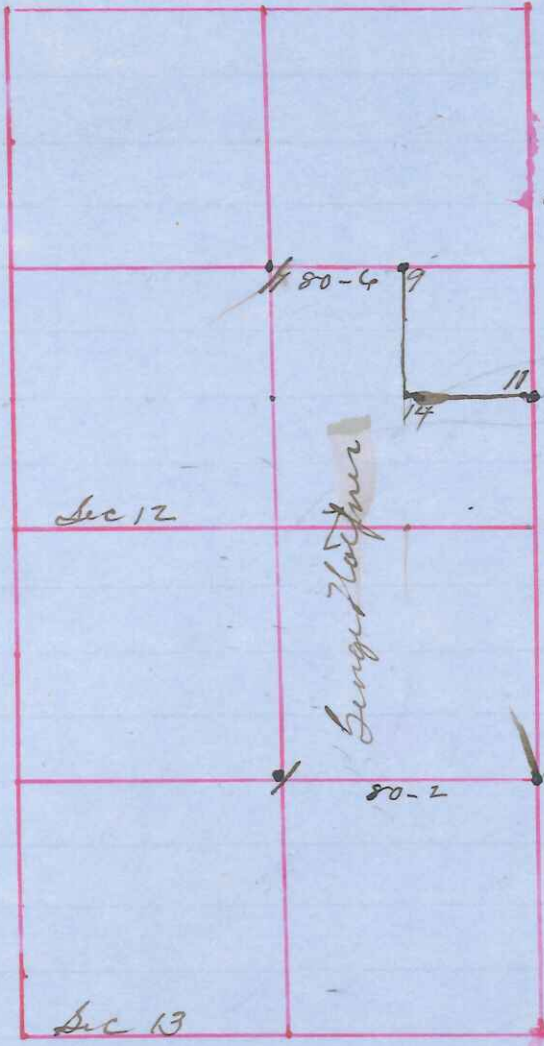


Survey & Subdivision of a part of
 Sections 12 & 13 Township 18 North Range 3 West of 4th prin Meridian



determined the location of SE Corner Sec 13 by chaining from known corner 1 mile East and from another 2 miles West then running north on range line set 1/4 Post E side 13 - at 40 chains corner 13+12 at 80 chains 1/4 Post E side 12x120 chains then on to NE corner sec 12 ^{converted E & W} then going to corner of Sections 5-6-7-8 town 18-2 as evidenced by Stumps of original B trees Chaining West 78 chains 86 links then locating corners of sec as provided by law Set Iron bar at each also Iron bar at 1/4 post East side sec 13

- at cor 12 & 13 Iron Bar fo 5 N 44 W. 110 1/2
 Iron Bar S 56 1/2 W. 143 1/2
- in sec 12
- at # 11 Iron Bar S 58 1/2 W 36
- " # 14 Pine S 52 1/2 W 243 1/2
- " " 81 1/2 W 294
- " # 9 Iron Bar S 60 W 54
- " Pine N 31 W 55

done Aug 9th

10th and 11th ad 1900 sworn assistants were
 Arthur Hall } Chainmen
 Hiram Cook }
 issued to George Harper }
 Michael Daly } Plagmen
 George Harper }
 Paul A Holden
 Co Surveyor