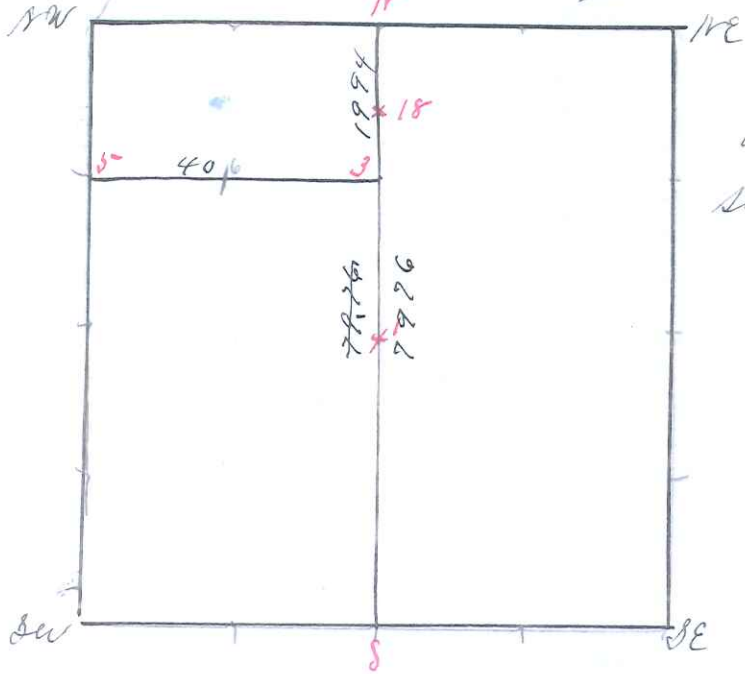


Office of Surveyor
 Winona County Wisconsin
 Sec 22 Town 19 N Range 4 W 4th PM



Survey Made Nov 3 + 4 - 1911
 all lines run by both fore and back
 sights all random stakes corrected

- NE Sec Corner reestablished former Survey
- NW " " Original
- SW " " Original
- SE " " Original
- N 1/4 " have Stake at Corner
- S 1/4 reestablished in line to 5-16-70 E 29
 " 3 S 44 to 22
- #1 Stake
- #3 " " 16 N 5-2 W 44 3/4
 " " 10 N 75 1/2 E 54
- #5 Stake
- 27 #6 "
- 26 #18 "

I hereby Certify that the above diagram and field notes are correct of the partial survey of section 22 19 N Range 4 W as surveyed by direction of Hon Bacon dated this 24 day of November 1911

Frank A. Holden
 Surveyor