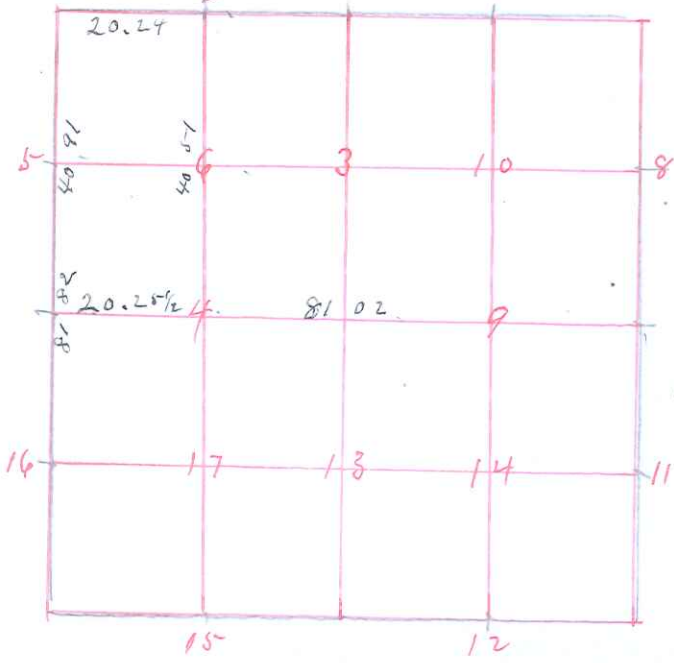


Sec 20 Town 18 N Range 3 West



Survey made Dec 14-15-16 1910.  
 Survey assistants  
 D. Jenkins  
 C. W. Benson & Chas. ...

Paul Patz Assessor

SW Section corner

Stone set by former Surveyor Verified  
 by Bo Stp. S 6 1/2 W 35-

Bo Stab S 5-5-E 78

agrees with Govt field notes

SW Sec Cor

Br 0 9 now 24 S 25 1/2 W 27 0 B

E 1/4 Sec 20 Stone set by former Surveyor  
 from Original bearing.

W 1/4 Sec Cor Re-established

Bo 14 S ~~22 1/2 E 15~~

# 2. Cor stake set for distance in Sec line  
 as per Govt field notes

# 4 for 4 notes &

# 5 Stake

# 6

I hereby certify that the above diagram and  
 field notes are correct of the Partial Survey  
 of Sec 20 Town 18 N Range 3 W

as Surveyed by directions of J. D. Parish  
 dated this 17th day of December 1910

Paul A. Walden

Surveyor Manual Co Wis