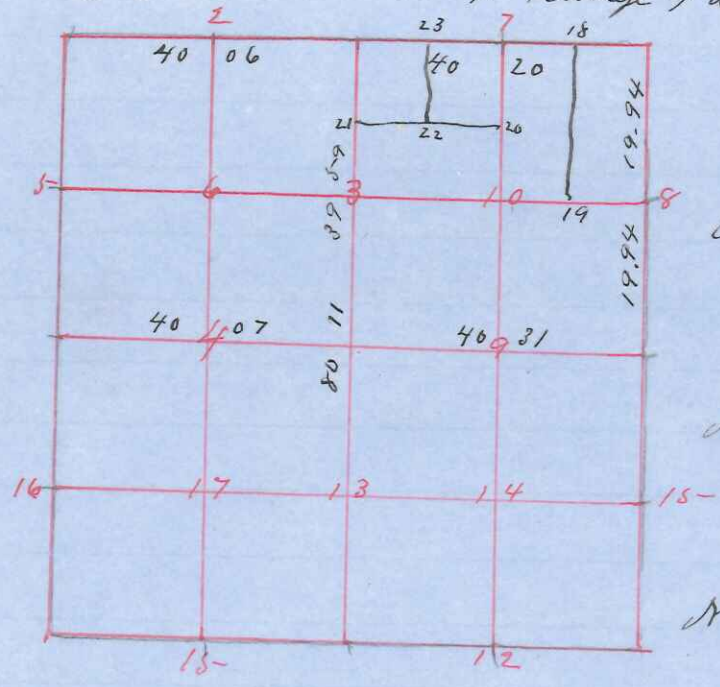


Sec 34 Town 15 N Range 4 W



Survey made Nov 15th and 1910

Assistant Surveyor

- N E Sec Cor W 0 R 0 70 W 35 Original
- " " S 70 1/2 E 100
- W 0 9 Marked for living corner
- N W " " 18 N 87 W 86 Original
- B 0 10 N 10 E 62
- N 1/4 " " Original by Stump of Corner Tree
- Set iron pipe at corner
- W 0 18 S 65 W 5-2
- " 7 N 5-3 E 70 1/2
- E 1/4 " " B 0 R 0 70 W 32 Original
- " " S 75 E 12
- Set iron pipe at corner
- W 1/4 " " Maple 10 S 60 1/2 W 25 Original
- Lind 8 1/2 N 70 1/2 E 12
- Set iron Thimble at cor

- C W 0 16 South 9 1/2
- # 2 1 in iron pipe at corner
- # 3 W 0 7 S 45 W 1 # 4 Ironwood 3 N 65 E 3
- # 7 1 in iron pipe at corner
- # 8 " " " "
- ~~# 15 Ironwood 3 N 65 E 3~~
- 26 # 18 1 in pipe at corner
- 27 # 19 " " "
- 28 # 20 " " "
- 29 # 21 " " "
- 30 # 22 " " "
- 31 # 23 " " "

I hereby Certify that the above diagram and field notes are correct of the partial survey of sec 34 Town 15 Range 4 West as surveyed by direction of Martin Erickson and others

Dated this 2nd day of December 1910

Paul A. Holden

Surveyor Assessor No 112