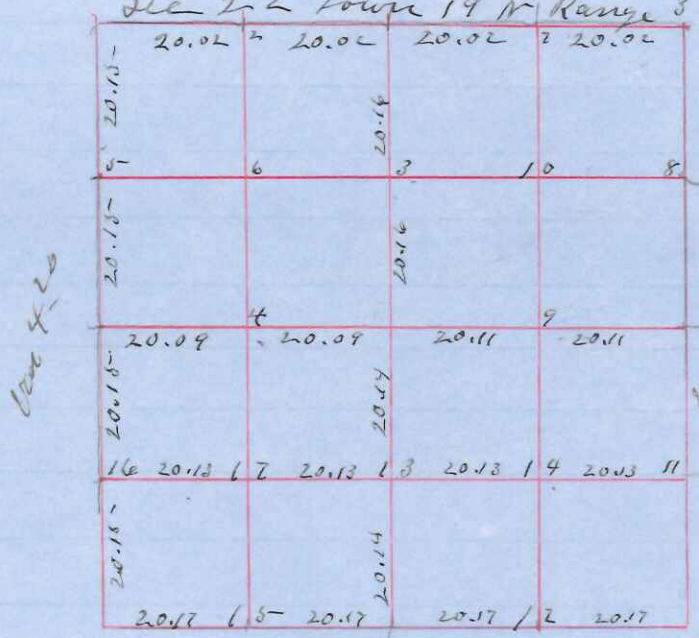


Sec 4<sup>30</sup>

Sec 22 Town 19 N Range 3 W

Survey made Nov 24 - 27<sup>th</sup> 1909



for Sparling, Rose and Van  
 Instrument used Transit & Steel Tape  
 Lines run by fire and hand sights  
 and trial lines corrected back to true  
 lines

NE Sec Corner W.P. 5<sup>th</sup> N 74 E 27 fd  
 " N 73 29 "  
 " True West 59 "  
 as per East Water & Point of Fairweather Stake  
 Set Stone between two stakes

NW 1/4 Pine Stub N 74 E 31 Shower Lumber Blay  
 130 5<sup>th</sup> N 73 20 36  
 Set Stone 24x14x6 at Corner  
 SW gone & established by Prof. J. W. Mason  
 E. W. N 73 Set Stone 20x15-x 4  
 Pine 8 8 1/2 W 237 (Corner Top of Bluff)

S.E. Stake set by Holders verified  
 by remains of org. Bearings and older stake  
 in the ground set Stone 20x15-x 6 at Cor  
 NW 3 7 12 8 2 E 168 marked by Holders

N 1/4 Cor (lost) reestablished in line  
 Set Stone 18x12x6

S 1/4 lost reestablished in line  
 Set Stone 18x16x4

E 1/4 lost reestablished in line  
 Set Stone 24x12x6

N 1/4 lost reestablished and set Stone 12x10x6  
 C1 Stone 17x15-x 8 - intersection of  
 street & line

SW Cor Sec 21 Stake set by Holders OK  
 Stone 24x15-x 8  
 NW 13 1/2 Sec 13 N 24 W 43

SW Cor 28 Original in 1904 Stone 16x14x4

- # 3 Stone
- # 4 "
- 6 "
- 7 "
- 8 "
- 9 "
- 10 "
- 11 "
- 12 "
- 13 "
- 14 "
- 17 "

I hereby certify that the above Diagram and  
 field notes are correct of the Survey of Sec 22  
 Town 19 N Range 3 W as surveyed by direction  
 of Sparling, Rose & Van  
 Nov 27 1909 C. W. Keech