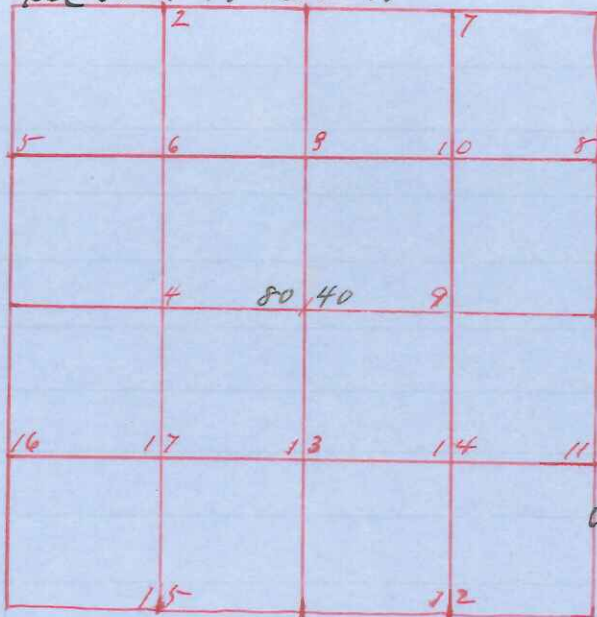


Sec 33 T 17 R 2 W



Survey made April 24<sup>th</sup> 25<sup>th</sup> + 26<sup>th</sup> 1907  
by direction of Jm Bell  
Sworn assistants

Chainmen

H D Howells

Thos Williams

Steve Harrington

Flagmen

Jm Bell

Lloyd Jones

Otto Bell

all lines run by  
both fore and back sights

all random stakes correct

Field Notes

- # E Sec 30 Original Corner No 12 S 50 1/2 E 7 New
- # W " " established from E W N + S
- # 1/4 " " Original Corner Maple S S 80° 45' E 45 New
- # 1/4 " " " " fo 16 N 57° 20' W " "
- # 1/4 " " " " " " " " " "
- # 1 1 1/2 in pipe at corner
- # 3 " " " " " "
- # 5 No 4 S 65 E 27
- # 6 Hick 5 S 52 1/2 W 68
- # 9 Stake
- # 15 No 12 N 25 1/4 W 37
- # 17 No 8 N 62 1/4 W 134

Recorded April 30<sup>th</sup> 1907

Paul A Holden

Geo Swearingen