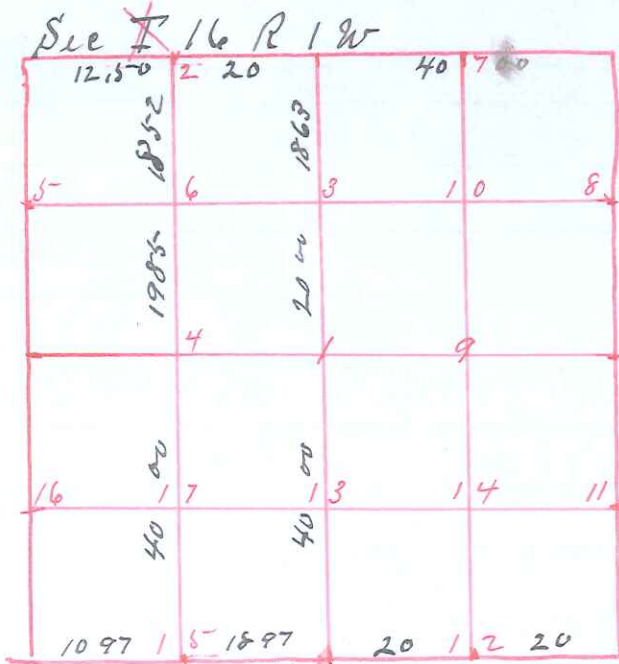


6 wry 8/5/82



Survey made April 3rd 4th & 5th 1907
by direction of Paul Genevickow
Sworn Assistants

Chairmen

Aug Math
Herman Rewit
Otto Hoffman

Playmen

Paul Genevickow Sr

*Total Chaining 127.184

according to original field notes "136.7"
Careful Chaining of the south line of Section
discovers a shortage from original field notes of
2 Chains 19 links which I have divided in proportion
between the fractional on the west and the next 40 East
field notes

- NE Sec Cor Reestablished in Line 1897 Bo 6 N 38 1/2 W 104 1/2
- NW " " Bo 12 N 59 E 38 Original
- " " " " " New tree wo 12 N 50 E 98
- SW " " Original by Stone placed at corner when O Becomes existed
New Elm 20 S 60 1/2 E 125-
- SE " " wo 24 N 83 W 40
- N 1/4 " " reestablished in Line Hickory 4 N 42 E 13
- S 1/4 " " Lane 12 S 33 W 88 Reestablished in Line
- E 1/4 " " Original
- N 1/4 " " "
- Q Jo 10 S 54 W 10
- # 2 Bo 26 S 26 E 20 - wo 8 N 17 1/2 W 10
- # 3 wo 18 S 1 1/2 W 5-
- # 13 wo 16 S 87 W 13
- # 15 wo 24 S 63 W 15-3

Recorded this 6th day of April ad 1907

Paul A. Holden
Co Surveyor