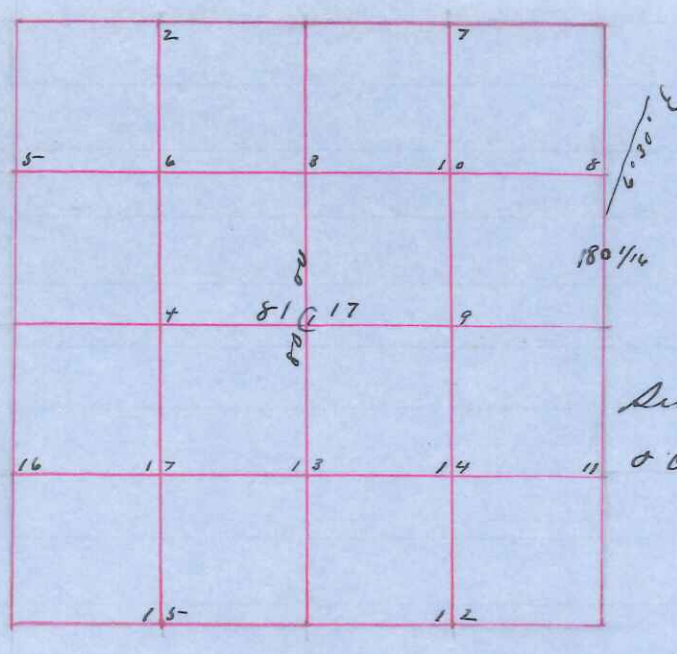


Sec 12 Town 13-3-W



Survey by W Kenyon  
Nov 19th to 27th ad 1891

Survey assistants

Chairman

Anton Keite

Michael Weidel

Surveyed by directions of Galtfried Butzler  
& others

Field notes

Original

- NE Sec Corner Bo 6 S 86 1/2 E 40 Old B then down
- Bo 8 S 87 1/4 W 77 Set Sand Stone 8 in wide 21 in long
- NW " " Wo 8 N 80 1/4 W 2 1/2
- do 12 N 8 E 24
- SW " " Bo 10 N 8 E 135
- Wo 8 N 21 3/4 W 120
- N 1/4 " " Hickory 6 S 9 W 62
- Bo 14 N 63 E 53
- E 1/4 " " Bo 8 N 2 1/2 W 63 1/2
- Wo 6 S 29 1/2 W 66
- S 1/4 " " Bo 12 N 23 W 43
- do 4 N 73 E 9
- # 2 Part in school yard no bearings
- # 8 Bo 7 N 2 W 4
- # C Dbl Bo 12 N 86 1/2 E 26 1/2
- Wo 7 S 86 1/2 W 39
- # 18 Wo 7 S 31 W 40

Walter Kenyon

Survey Manual Co Wis

Recorded this 29th day of August ad 1904  
by Paul A Holder  
Co Sur