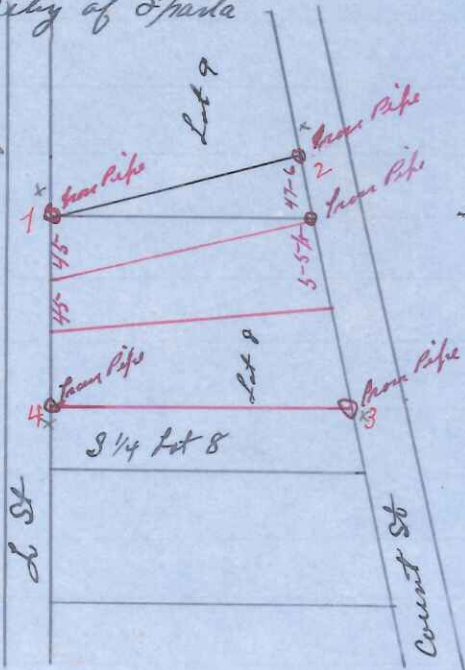


Barab 3rd addition to Village

now City of Sparta

Stakes No 1-2-3-4 are set in all places known on this map as being 25 year road



State of Wisconsin  
 County of Monroe I do hereby certify that I have surveyed Lot 8 and a part of Lot 9 of Barab 3rd addition to the Village now City of Sparta and placed an 1 1/4 in Iron pipe at the NE & NW corner of Lot 8 and at the SE & SW corner of the North 3/4 thereof also a like Iron pipe 47 ft 6 in North by an line of Coast St from the North East Cor of Lot 8 and that the annexed plat is a correct representation of said survey

done by directions of Mr Sheldon this 7th day of May ad 1904

Paul A Holder Co Surveyor

Sec 2 + 11 216 R 2 W

State of Wisconsin  
 County of Monroe I do Office of County Surveyor

I hereby certify that in June ad 1904 by direction of Joseph Fieldmies I did reestablish the 1/4 Part between Sections 2 & 11 Township 16 N Range 2 West finding one original Bearing Tree to wit according to Govt Field notes Run Oak 65 N 13° W 24 links down & badly decayed but still bearing evidence which is supported by Affidavits of old settlers that it is one of the original Bearing Trees for that corner I set at corner 1 1/4 in Steel Shaft 23 in long and made new bearing tree

B 05 N 15° 30' W 66 lks  
 No 12 S 9 W 93 1/2 "

Dated Feb 2nd ad 1905-

Paul A Holder  
 Co Surveyor Monroe Co Wis