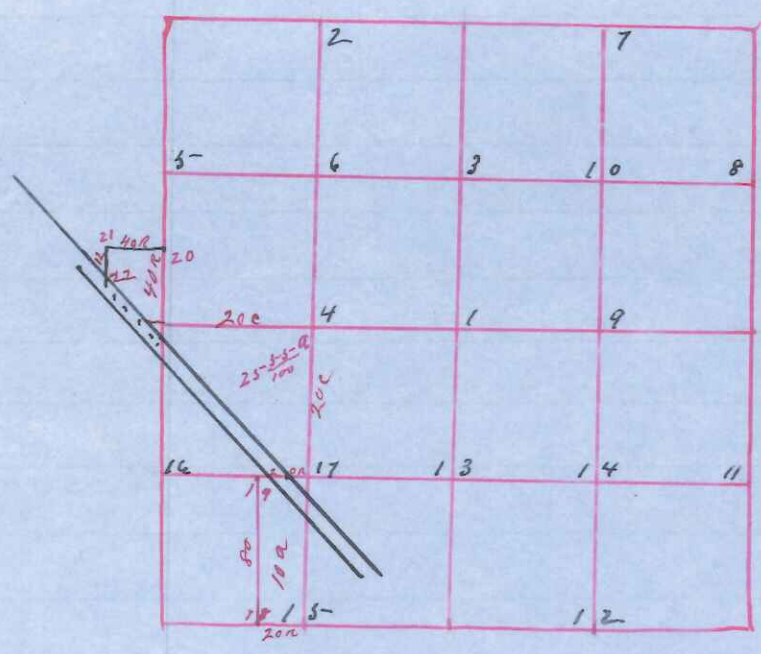


Section 20 Town 17  
Range 3 West



State of Wisconsin  
County of Monroe I Paul A Holden  
Surveyor in and for the County and  
State aforesaid do hereby Certify that  
I have surveyed and subdivided  
Sec 20 Township 17 North Range 3  
West as represented by the annexed  
Plat and field notes of survey  
Surveyed and subdivided at different  
times 1895 to 1904.

in accordance with State  
Laws and Instructions of Commissioner of Gen  
Land Office and recorded on page 185-

Field Notes Reestablished Rn 07-S 13 W 47

- Original NW Sec. Cor old corner pit and mound obliterated by RR work
- Original NE " Zamoroc 10 S 19 1/2 W 29
- Original SE " do 12 N 50 1/2 W 19
- Original SW " " Placed from Rock by side of Stone
- N 1/4 Corner Stake
- E " " Stake
- S " " to 20 N 3 E 39
- W " " to 6 S 81 E 207
- to 10 S 73 E 187 Iron at corner
- # 4 Iron Rod at corner
- # 15 Stone at corner x MK
- # 17 " " " "
- 26 # 18 2 in Iron bar at corner
- 27 # 19 3/4 Pipe at corner
- 28 # 20 " " " "
- 29 # 21 " " " "
- 30 # 22 " " " "

Names of Sworn assistants

- Chairman Paul A Holden
- S A Hall
- George Esch
- Flagman W E Riley
- Van Hall

Witness my hand this 20th day of January ad 1905-  
Paul A Holden  
Co Surveyor