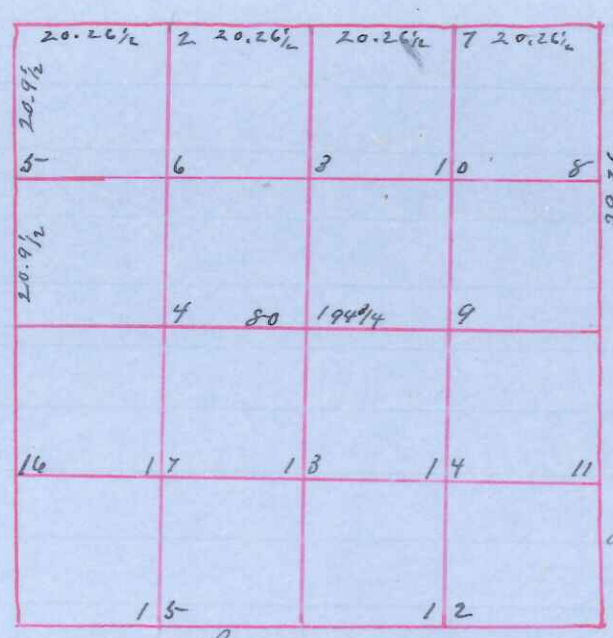


Section 15 - town 19

Range 4 West



Dir 5° E

State of Wisconsin  
 County of Monroe  
 I Paul A Holden Surveyor in and County  
 and State aforesaid certify that I have  
 surveyed and subdivided the N 1/2 of section  
 15 - town 19 Range 4 West done in accordance  
 with state laws and the field notes of  
 Original Govt Survey  
 Nov 17th 18th + 19th ad 1903

Field notes

- Original NW Section Corner <sup>new</sup> to 12 S 73 E 130
- " NE " " Stone at corner
- " SW " " Stake at corner
- Restab N 1/4 " " to 5 S 2 W 5-
- Original E 1/4 " " Red 0 5 N 4 1/2 W 81
- Restab W 1/4 " " Bo 5 N 2 1/2 E 66
- Subdivisions " " Stone at corner

Sworn assistants

- # 1 Stake at corner Chairman
- " 2 " " Hugh Gallagher
- " 3 " " Ed Fausley
- " 4 to 4 N 41 W 9 Flagman
- " 5 to 8 N 65 1/2 E 21 1/2 Jacob Watten
- " 6 Stake at corner C W Prinity
- " 7 " " " Arman
- Herman Zillmer

Witness my hand this 6th day of Feb ad 1903  
 Paul A Holden  
 Co Surveyor