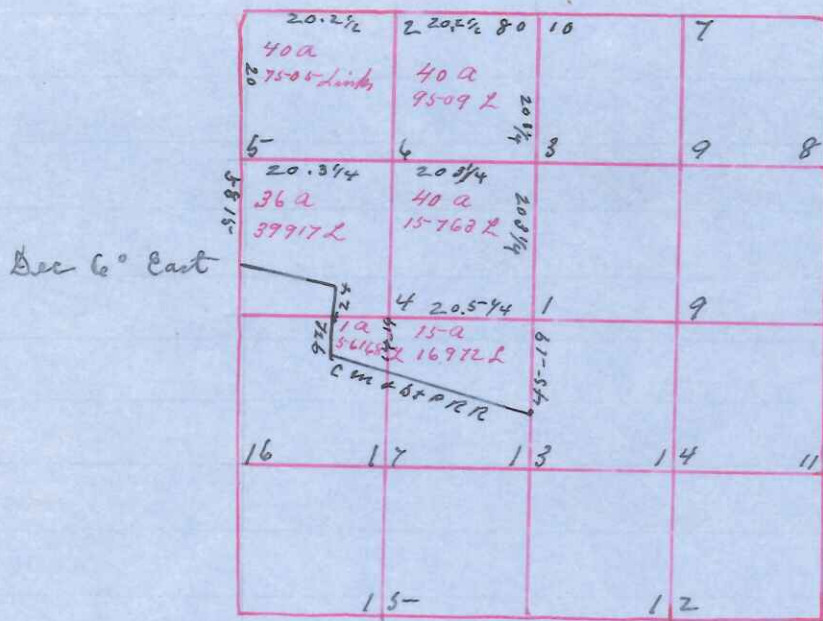


Sec 32 Town 18

Range one West



State of Wisconsin }
County of Monroe } S.S.

I Paul A. Holden Surveyor in and for County and State aforesaid do Certify that I have surveyed the N 1/2 and a part of the South West 1/4 of Section 32 Town 18 Range one West and that the Area of each Subdivision and fractions thereof as given in acres and square links in Red is correctly computed from actual measurements done in accordance with

State laws and the Field notes of Original post Survey the Aug 6th 7th & 8th ad 1903

Field notes

Re-established 1901	NW Section Corner	Stone 6x6 x 36 x MC
Original	NE "	Blk O 12 S 45 E 82 Steel bar at corner
	SE "	Pin at corner
	SW "	blind Stake in Highway
	N 1/4 "	W Pine 7 S 5 1/2 W 47 1/2
	E 1/4 "	blind Stake
	W 1/4 "	Jo 6 S 11 E 17
	Subdivisions	"

# 1	Stake	Sworn assistants
" 2	" Md 15-	Chairman
" 4	"	Joseph Schmitt
" 5-	"	Emil Pelling
" 7	"	Flagmen
" 9	" West 50 links	Herman Liskie

Witness my hand this 10th day of August ad 1903
Paul A. Holden
S.S. Surveyor