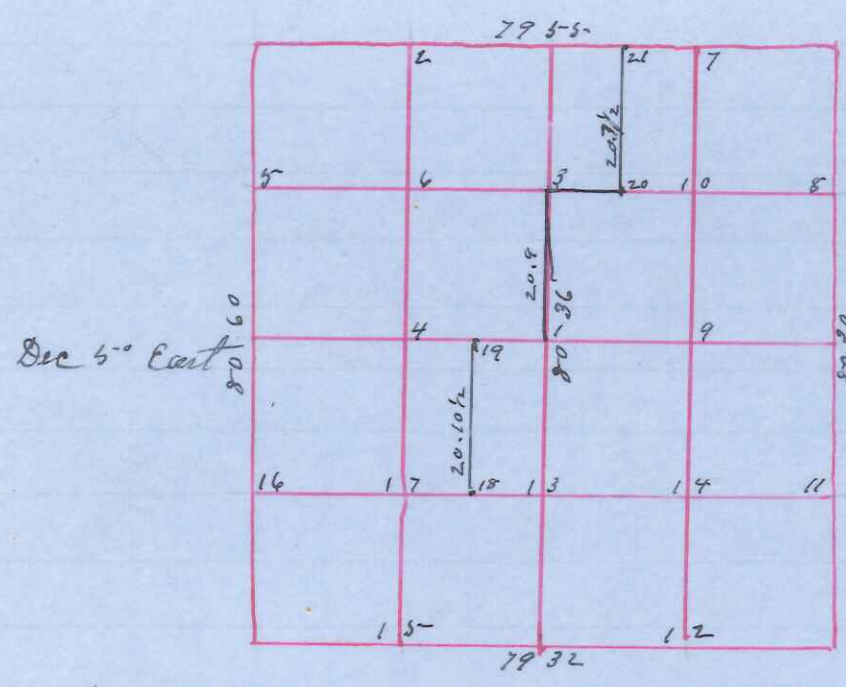


Section ²³ ~~28~~ Town 16
Range 4 West



State of Wisconsin,
County of Monroe J.S.S.
I Paul A. Holden Surveyor in and
for County and State aforesaid do
Certify that I have surveyed and
subdivided sections 23 Town 16
Range 4 West done in accordance
with State laws and the field notes
of Original Govt Survey
May 28 & 29th ad 1903.

- Field Notes New to Dbl B.O. S 7° 45' E 116
- Original N W Section Corner fo 12 N 85 E 36
 - " NE " "
 - " SE " " by Peter Lee + others placed Pines RR Rail by the Stone
 - " SW " " Stone at Corner placed when old B trees were standing
 - " N 1/4 " " (New) B.O. 4 N 70 E 41 by Stumps & B trees
 - Re-estab E 1/4 " " Stone at Corner found B.O. of 0 37 B.O. 13 N 35 W 100 placed Stone in Post
 - " W 1/4 " " Stone 6x6x24 B.O. 20 N 83 W 94
 - " " " Stake at Corner

- Subdivisions Corners
- # 1 Lime Stone at Corner x MK
 - " 3 " " " "
 - " 7 Stake " "
 - " 8 fo 7 S 6 E 22
 - " 9 Limestone x MK
 - " 10 Stake
 - " 11 " in south wheel track Sworn assistants
 - " 13 Limestone at Cor x MK Chainmen
 - " 14 B.O. 24 N 40 W 25 1/2 George Esch
 - " 15 Limestone at Corner x MK Will A. Holden
 - " 16 fo 12 N 48 1/2 W 50 W. F. Riley
 - " 17 W.O. 6 S 10 W 26 Flagmen
 - 26 " 18 W.O. 7 S 65 E 10 in Ernest Austin
 - 27 " 19 W.O. 20 N 4 3/4 E 58 Stone x MK E.A. Austin
 - 28 " 20 " " " "
 - 29 " 21 Stake " "

Witness my hand this 19th day of June ad 1903
Paul A. Holden
Co Surveyor