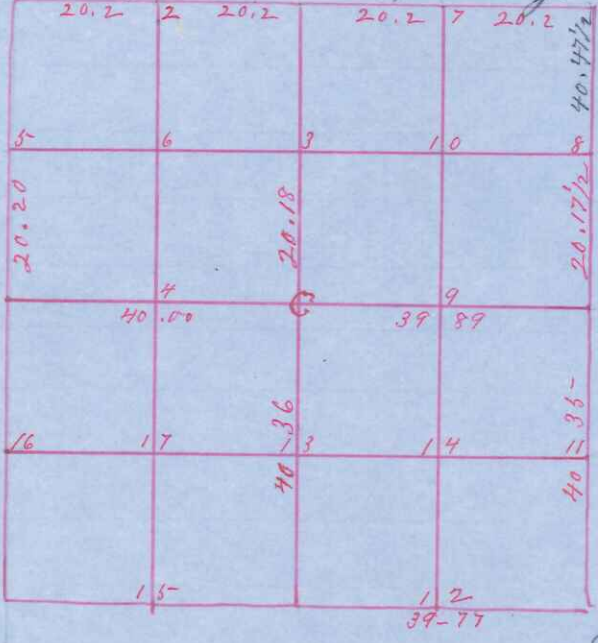


Office County Surveyor
Monroe County Wis
Sec 5 Town 16 N Range 3 W



Survey Made Nov 1st 2nd + 3rd 1905
Center of sections established at inter
sections of strait 1/4 lines all lines
run by fore + hind sights
all Gandom stakes corrected
Chairmen

W A Holder
John Allen
E Friskie

Flagmen Frank Lombard
Earl Thurston

Corner on Town Line established in line by
running from N.E. corner of sections to NW corner
of Township both being original Govt. corner with
evidences existing

Field Notes

- N.E. Sections corner Original by 1 old B tree
- NW established in line No 8 S 40 E. 29
- SW not touched
- S.E. Original by 1 old B tree Iron bar at corner
- N 1/4 cor established in line set 1 1/2 in angle iron at corner
- S " Original by 1 old B tree set 1 1/4 in Galv'd Pipe at corner
- E " set Drive Well Paint in line
- W " Original by Measurement and remain old B tree
- 1 1/2 in Iron bar piece casting on top set at corner
- # 9 Stake at corner
- # 13 " " "

I hereby Certify that the above Diagram + Field
Notes are correct of the survey of sections 5 Town 16 N
Range 3 West as surveyed by direction of K W Thurston
Dated this 1st day of February ad 1905-

W A Holder
Surveyor
Monroe County