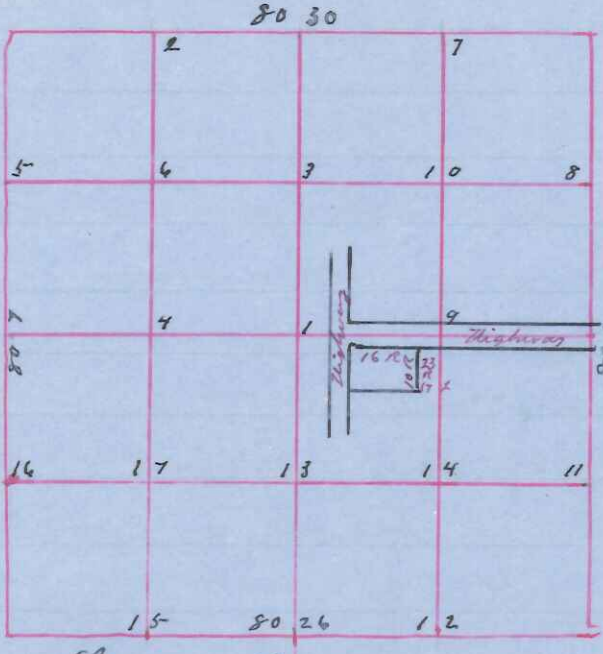


Sec 26 town 19  
Range 3 West

Dec 5° E



State of Wisconsin  
County of Monroe ss  
I Fred A Holden Surveyor in  
and County and State aforesaid  
Certify that I have surveyed Section  
26 town 19 range 3 west to locate  
School House Site done in accordance  
with State Laws and field notes of  
Original Loc<sup>t</sup> Survey  
April 28<sup>th</sup> 29<sup>th</sup> 30<sup>th</sup> ad 1902

Original	Field notes	made new
Recontab	NE	Stone at corner x mk
"	SE	W Pine 6 S 79 20 52 1/2
"	SW	W " Stump 20 S 2 20 89
"	N 1/4	B 0 10 N 82 1/2 20 110
"	E 1/4	B 0 10 N 75 E 142
"	W 1/4	Stake at corner
		B 0 7 S 69 20 83
		f 0 6 S 26 1/2 20 102

Subdivision corner  
# 9 of Pine South 38

- Sworn Assistants  
Chairmen  
Frank Reiser  
J B Meyer  
L Richmond  
Robt Prescott  
Laymen  
Oscar Deane  
Fred A Holden

Witness my hand this 12<sup>th</sup> day of May ad 1902  
Fred A Holden  
Geo Surveyor