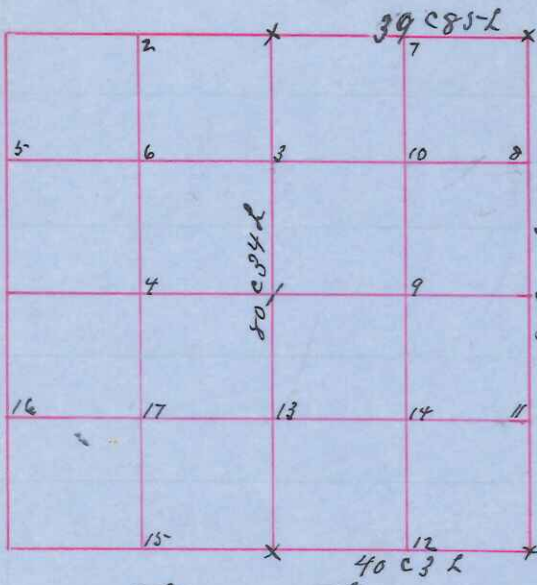


E 1/2 Sec 27
16-4-West



State of Wisconsin
Monroe County J. B. L. Paul a Holder
Surveyor in and for the State and
County aforesaid do hereby certify
that I have surveyed and subdivided
the East half of section 27 Township 16
North Range 4 West of the 4th Principal
Meridian as represented by the annexed
Plat & Field notes of survey Established

quarter quarter corner upon section boundary at pro-
portional distances between known sections and quarter
section corner according to the original field notes
of the Government survey Established last corner
at proportionate distances between known corners
according to original field notes of the Government sur-
vey Surveyed & Subdivided July 10th 11th & 12th ad 1901

Declination of the magnetic from true Meridian 6° E

Witness my hand this 13th day July ad 1901

all 13 the down
200 12 56 1/2 E 13
Original

"
"
New True
Original

	Witness	Field Notes		Stake at Corner
N Sec Corner		to 6 S 70 W 13	# 7	200 7 S 61 W 16
SE Sec Cor		to 4 N 76 E 41	# 8	200 6 N 43 W 19 1/2
		to 12 N 45 E 112	# 11	200 10 N 49 1/2 E 17
N 1/4 Sec Corner		to 12 S 88 1/2 E 13.12	# 12	200 4 N 56 W 10
E " "		to 10 N 58 W 19 1/2	# 13	to 6 S 72 E 17
S " "		to 9 S 81 W 27	# 14	to 12 N 28 1/2 W 29 1/2
Center Sec		to 15 N 54 W 118	# 9	to 20 N 9 W 68
#3		to 8 N 65 1/2 E 11	# 14	to 18 N 85 W 52
		to 3 S 35 W 34 1/2	# 14	to 10 N 57 E 67
		to 14 S 15 E 72 1/2	# 9	200 13 N 71 1/2 W 61 1/2
		to 12 N 88 E 12 1/2	# 9	to 7 West 6
				200 8 N 45 E 13

Sworn assistants

Chairman	Flagmen	Asses
W. H. Riley	Bert Brown	Ernest Austin
George Esch	William A. Holder	