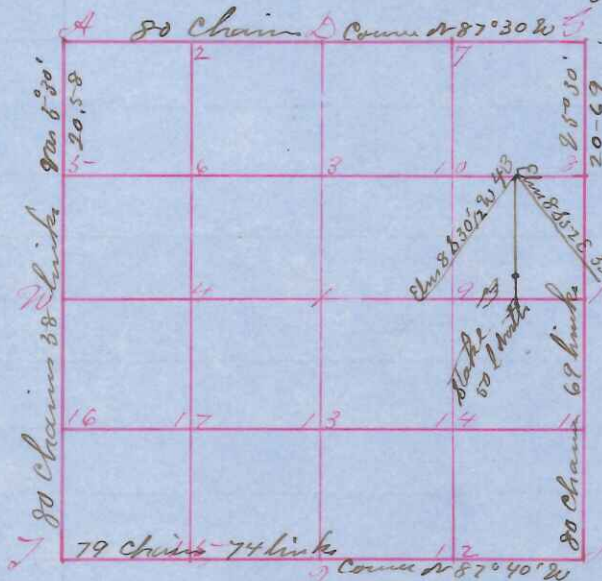


Survey & Subdivision of Section 3 Township 17 North  
Range one East of 4th principal Meridian

State of Wisconsin }  
County of Monroe } S.S.

P Fred A Holden

Surveyor in and for County & State  
aforesaid do hereby certify that  
I have surveyed and subdivided  
section 3 Township 17 North Range  
one East of 4th principal Meridian



as represented by the annexed  
Plat and field notes of survey Established center of sections at  
point of intersection of straight 1/4 lines Established all quarter  
quarter corners upon sections boundary at proportional dis-  
tances between known sections and quarter sections corner  
according to original field notes of government survey  
Established lost corner at proportional distances be-  
tween known corner according to original field notes  
of the Government survey Surveyed and subdivided  
in accordance with State laws and instructions  
of the Commissioner of the General Land office done  
Feb 15th 16th and 19th ad 1901 recorded and Certificate  
issued this 4th day of March ad 1901

Fred A Holden

Field Notes as follows

Co Surveyor

- NW sec Cor No 10 S 63 1/2 W 125
- NW sec Cor No 12 S 93 1/2 E 288
- NE Cor Stone South 50
- SE " " at Corner
- SW " fo 20 or 50 1/2 E 277
- SW " fo 20 N 24 W 178
- SW " fo 12 or 4 E 64
- #1 fo 10 S 18 1/2 E 66
- " 2 Stone at Corner
- " 3 fo 6 S 41 W 70
- " 4 Stone at Corner
- " 5 " " "
- " 6 " " "
- " 7 " " "
- " 8 " " "
- " 9 " South 50
- " 10 Maple 12 S 80 E 21
- " " 6 S 25 1/2 W 17
- " 11 No 8 N 40 1/2 W 30
- " 12 Stone at Corner
- " 13 No 10 N 23 1/2 E 36 Stone of Corner
- " 14 Maple 12 N 55 W 6
- " 15 Maple 12 S 40 1/2 W 25
- " fo 4 or 25 1/2 E 35
- " fo 3 S 25 1/2 W
- " 16 fo 12 S 09 1/2 W 9
- " fo 20 N 26 1/2 E 57
- " 17 fo 6 or 7 E 21

- NW sec Cor Stone at Corner
- E " " " fo 10 or 50 E 69
- S " " " Maple 10 or 50 E 20
- W " " " Ash 6 or 25 E 27
- Stone at Corner

Sworn Assistants

- Chairman Steve Kellogg
- W B Wallace
- Wm Claffier
- Frank Snyder
- Arthur Smithie
- Ed Gray
- Recorder