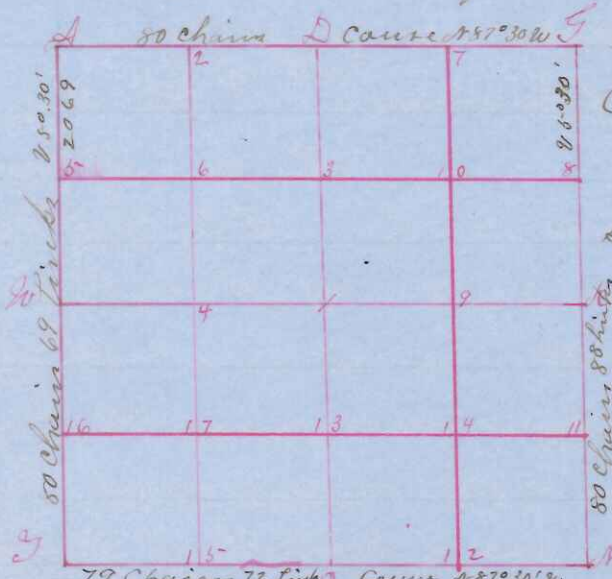


Survey & Subdivision of sections 2 township 17 North  
Range one East of the 4th principal meridian



State of Wisconsin }  
County of Monroe }

I Paul A Holden

Surveyor in and County & State aforesaid  
do hereby certify that I have surveyed &  
subdivided sec 2 Township 17 North Range  
one East of 4th principal meridian as  
represented by the annexed plot and  
field notes of survey Established centre

of sections at point of intersections of strait 1/4 lines Established  
all quarter quarter corners upon sections boundary at proportional  
distances between known sections and quarter sections corners  
according to the original field notes of the Government survey  
Established all lost corners at proportionate distances accor-  
ding to original field notes of Government survey  
done in accordance with the state laws and instructions  
of the commissioners of the General Land Office Feb 13 & 14  
ad 1901 declination of the magnetic from true meridian 5° 30' E

Field notes as follows

NW Corner Stone 2 50	N 1/4 sec Corner Stone south 47 1/2 E 66
NE " Aspen 5 N 65 1/2 E 120	E " " " at Corner
SE " Stone at Corner	S " " " " " "
SW " " " "	W " " " 50 10 N 50 E 59
at 1 Stone N 45 W 82	at 10 Elm 10 N 81 E 213
" 2 " South 50	" 11 Stone at Corner
" 3 " East 60	" 12 " " " "
" 4 " West 60	" 13 " " " "
" 5 Stone at Corner	" 14 20 20 N 73 1/2 W 216
" 6 " " " "	" 15 Stone West 50
" 7 " South 37 1/2	" 16 20 8 N 40 1/2 W 30
" 8 Ro 4 S 54 1/2 W 42	" 17 Stone at Corner
" 9 Stone N 25	50 20 N 68 E 96

- Sworn assistants
- Chaimers
- W S Wallace
- John Fair
- Flaggers
- Louis Nelson
- Wm Blafflin
- Frank Snyder
- Alvins
- Wm Koeffner
- Frank Snyder

Recorded and Certificates issued this  
4th day of March ad 1901 Witness my  
hand date as above written

Paul A Holden  
Co Surveyor