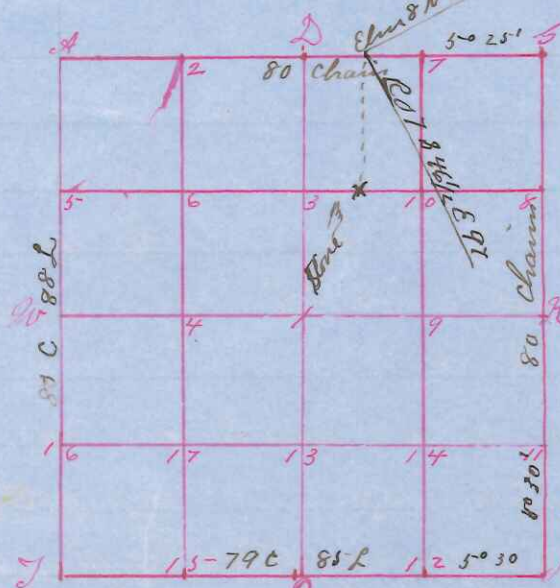


Survey & Subdivision of

Section one Township 17 North Range 1 East
 State of Wisconsin }
 County of Monroe } S.S. & Fred A. Holden



I Fred A. Holden
 Surveyor in and for the County and State
 aforesaid do hereby certify that I have sur-
 veyed and subdivided section one Town-
 ship 17 North of Range one East of 4th prin-
 cipal Meridian as represented by the course
 & distances on the annexed plat and field

notes of survey. Established the center of
 the sections at the point of intersection of straight quarter lines.
 Established all quarter quarter corners upon the section bound-
 ary at proportional distances between ^{known} sections and quarter
 section corners according to the original field notes of the
 Government survey and Established all lost corners at pro-
 portionate distances between known corners according to
 original field notes of the Government survey

Field notes as follows Declination May be 5° 30' East

- Stone at Cor NE Corner W Pine 8 S 58 1/2 W 404 f Pine 4 N 83 1/2 W 157
- " " SE " Original by remains of marked stakes
- " " SW " Stone at corner
- N 1/4 Post W 10 N 41 1/2 E 229 W 8 S 7 1/2 W 226
- " " E " "
- S " " W 8 N 48 E 18 W 7 S 53 E 23 Original
- W " " Stone at corner
- " " # 1 " "
- " " # 2 " South 37 1/2
- # 3 Elm 16 N 80 1/2 W 111 Elm 18 N 3 E 85
- * 4 Stone at corner
- # 5 Red 4 S 54 1/2 W 42 Red 4 S 81 E 97
- # 6 Elm 14 S 30 1/2 W 39 Elm 18 S 65 W 56
- # 7 Stone at corner W Pine 4 S 19 1/2 E 40
- # 8 " W 37 1/2
- # 9 " at corner
- # 10 " " "
- # 12 W 12 N 76 1/2 W 80 W 7 N 56 1/2 E 43
- # 13 Stone at corner
- * 14 W Pine 36 N 61 E 88 W 6 N 6 1/2 W 46
- # 16 Stone at corner
- # 17 " " "

Surveyed & Subdivided
 Feb 12th + 13th ad 1901
 Record & Certificate issued
 March 1st 1901
 Sworn assistants
 Chaimen
 J. L. Birnshaw
 Frank Eberhart
 W. S. Wallace
 Flagman
 Louis Nelson
 Axmen
 Wm. Haefner
 John Price
 N. E. Nelson

Witness Witness my hand
 Fred A. Holden
 Co Surveyor