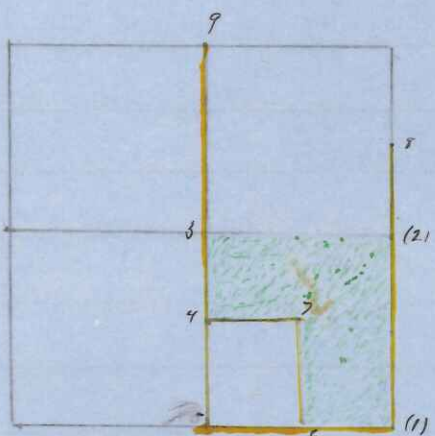


Surveyed the 12 + 13 days of October 1897, the East 1/2 of the S E 1/4 and the N W 1/4 of the S E 1/4 of Section 8 Range 4 West and proceeded as follows

Commenced at corner of Sections 8, 9, 16 + 17 B. P. Black Oak 6 in. S. 26° E 308 links. Run North 160 rods to 1/4 post. at 240 rods struck 1/8 post. Returned to 1/4 post and run West and at 19,61 ch set temporary 1/8 post. and at 39,22 ch set temporary 1/4 post being a true corner

Then went West ~~between~~ between 5 and 8 B. P. identified chenee South intersecting at center 1/4 post at 160 rods. Chenee South 80 rods set temporary 1/8 post and at 160 rods set temporary post. Returned to section post corner of 8 9 16 + 17 run West and at 19 85 1/2 ch set temporary 1/8 post and at 29 78 1/4 ch set 1/16 post and at 39 71 intersected at post. being center 1/4 post between sec 8 + 17

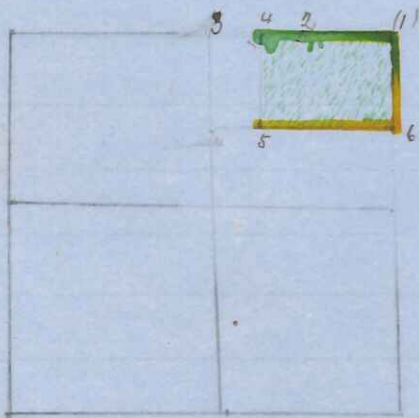


- At 1 Section corner of 8 9 16 17 B. P. Black Oak 6 in
 - 5 26° E 308 Links
 - " 9 Post and original B. P. found
 - " 2 + 8 posts set by former surveyor
 - " 3, 4, 7 + 6 permanent corners of stone
- Chairman William Bacon and
St. B. Ponsley now duly sworn
Witness my hand at Nelson this
15th day of Oct 1897

Stamilton La Rue
Co Surveyor

Surveyed for John Remington the N E 1/4 of the N E 1/4 and the East 1/2 of the N W 1/4 of the N E 1/4 of Sec 17 and proceeded as follows

Commenced at corner of Sects 8 9 16 + 17 run south 80 rods to 1/8 stake, established by Co Surveyor Henryon, thence West 19,60 1/4 ch set temporary post thence 9,80 ch set temporary post. thence North 80 rods and struck 1/8 post on sec line of 8 + 17 East of 1/4 post.



- at 1 same as in diagram above
- at other numbers stone monuments

Chairman sworn
Witness my hand officially at Nelson this
15th day of Oct, 1897. St La Rue
Co Surveyor