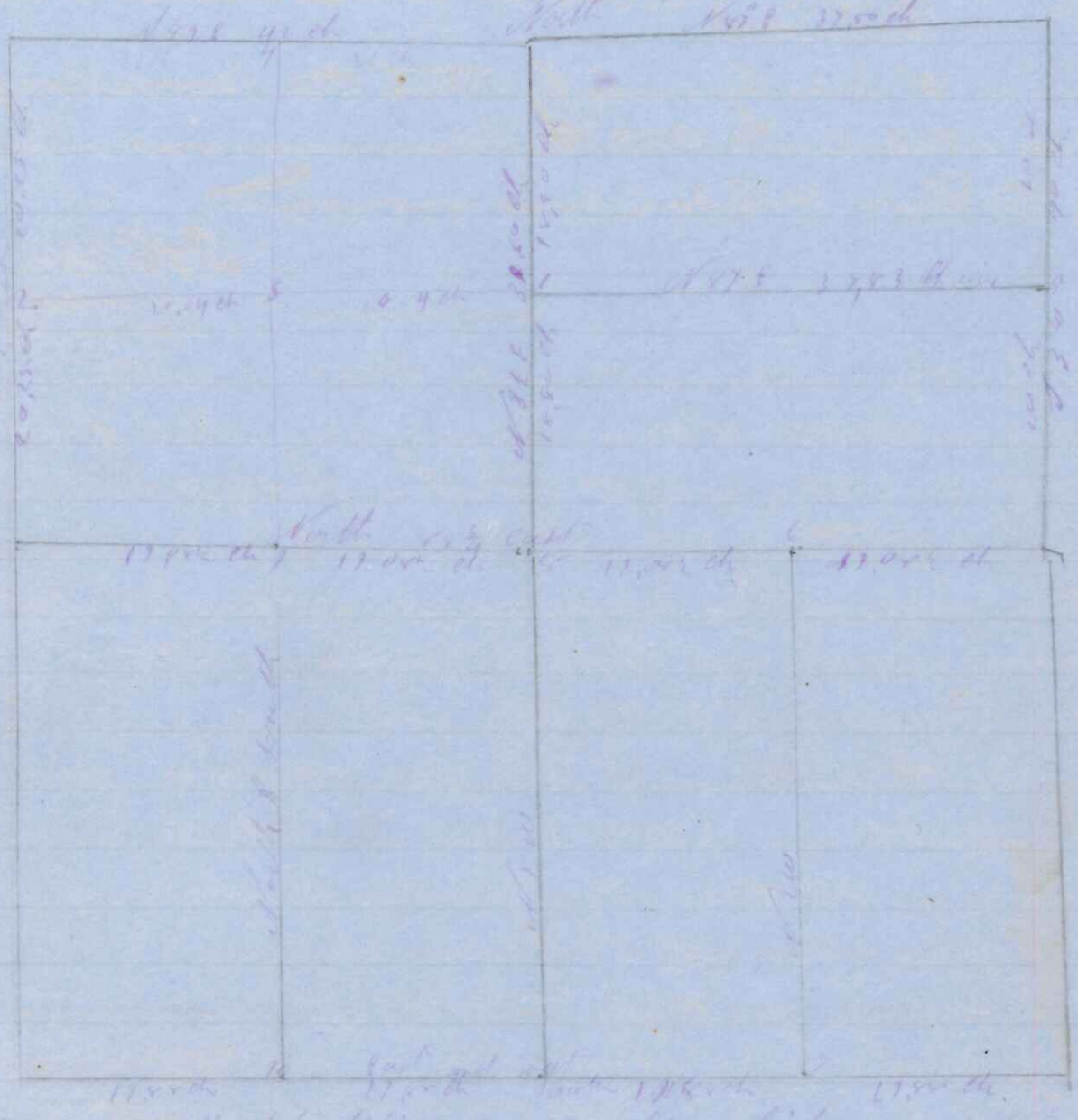


State of West Virginia, Putnam County, Surveyor in and for said
 County and State do hereby certify that I have surveyed
 and subdivided Section 15, 16, 17, 18, 19, 20 of T. 15 N. R. 10 W. of 4. Meridian as represented by
 corners and distances in the following plat, Established corner to at equal distance
 from Point A to B, Declination of magnetic from true meridian 6° 20'
 East 1882



Government corners all identified except 14, which was established in a straight
 line and at equal distance from A, B, C, D, E, corners

1	Point	16	at 5000	20	Surveyed and subdivided March 24, 1882
2	Point	17	at 100	21	Government survey lines this 24th day of March
3	Point	18	at 100	22	1882 at J. Ingalls Co. survey
4	Point	19	at 100	23	
5	Point	20	at 100	24	
6	Point	21	at 100	25	
7	Point	22	at 100	26	
8	Point	23	at 100	27	
9	Point	24	at 100	28	

Section 15, 16, 17, 18, 19, 20 Surveyed June 23, 1882
 Government at center as established by bearing line
 run 180° 00' 00" to E of stake, then E of line 10000 ft
 to old corner from old corner line run 20000 ft
 to old corner line from E corner line 18 31.76 ch to E corner
 line A. M. corner East 42 ch, to E of stake

at center	bearing	10	at 100	10
at center	bearing	11	at 100	11
at center	bearing	12	at 100	12
at center	bearing	13	at 100	13
at center	bearing	14	at 100	14

Variation of magnetic from true meridian 6° 20' course run from
 true meridian. Witness my hand this 23rd day of March 1882
 J. J. Ingalls Co. Surveyor