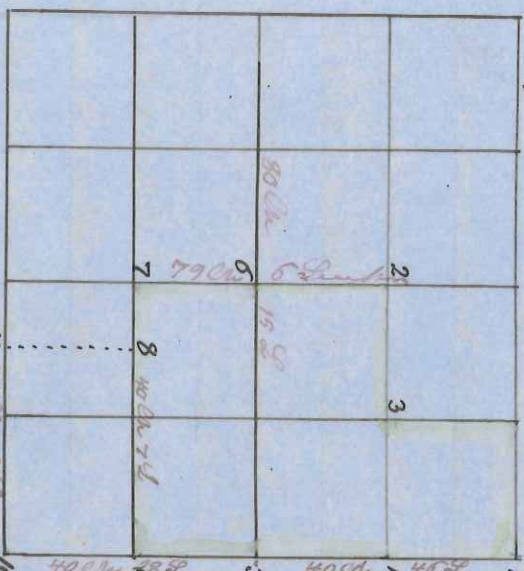


As the owner considered that on the 18th day of April 1871 some surveying the N^W of H² the E¹ of and the N^W of H² of H² 14, 15, 18 as owned by Jones and used the H² of H² and the E¹ of H² owned by C R Brown the further partition can well be observed from the diagrams & Remarks below

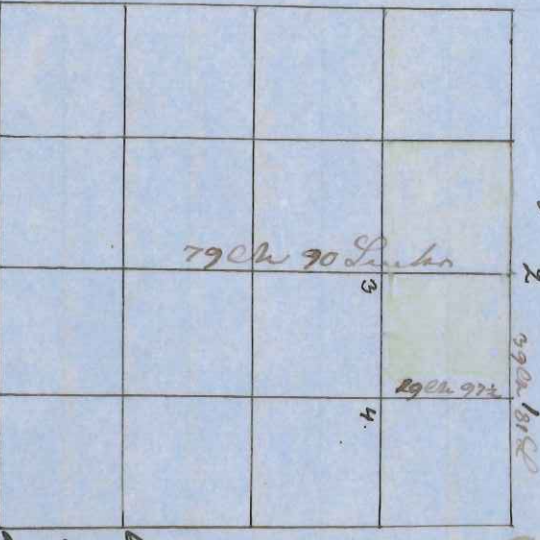


- 1 BT at 1. 1/2 acre 20 N 23 E 688 contd west of Jones
 2 1/2 acre 20 N 23 E 688 contd west of Jones
 3 1/2 acre 20 N 23 E 688 contd west of Jones
 4 1/2 acre 20 N 23 E 688 contd west of Jones
 5 1/2 acre 20 N 23 E 688 contd west of Jones
 6 1/2 acre 20 N 23 E 688 contd west of Jones
 7 1/2 acre 20 N 23 E 688 contd west of Jones
 8 1/2 acre 20 N 23 E 688 contd west of Jones
 9 1/2 acre 20 N 23 E 688 contd west of Jones
 10 1/2 acre 20 N 23 E 688 contd west of Jones

As the 18th of April 8th on the 20th of June 10th the year corners were adjusted after the State 1875, the cleavage be shown the year corners are carefully measured and several small changes made both the measurement was made according to law.

W. D. D. D.

As it was in hand that on the 8th day of April 1871 some surveying the N^W of H² and H² by the N^W of H² of H² 13, 15, 18 by agreement of the owner of the same the 18th of June for further partition see Diagram & Remarks below



- 1 BT at 1. 1/2 acre 20 N 23 E 688 contd west of Jones
 2 1/2 acre 20 N 23 E 688 contd west of Jones
 3 1/2 acre 20 N 23 E 688 contd west of Jones
 4 1/2 acre 20 N 23 E 688 contd west of Jones

W. D. D. D.