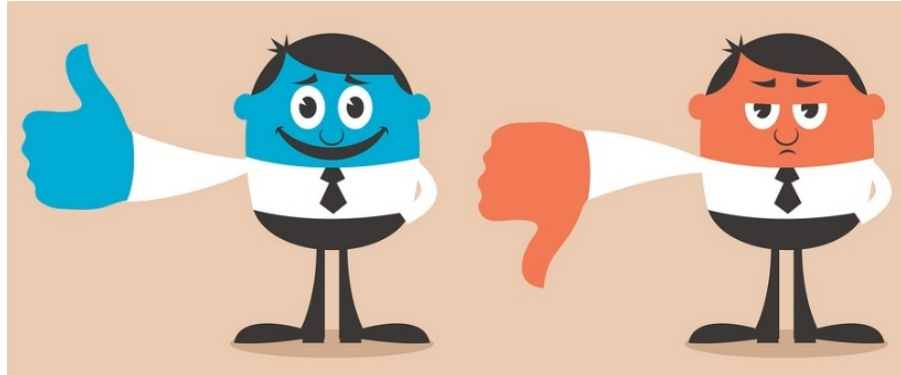


ADDRESS SIGN DOs & DON'Ts



- ☺ Place address signs in a highly visible location.
- ☺ Keep vegetation trimmed if it will obstruct sign visibility.
- ☺ Install old style single faced sign plates parallel to the road.
- ☺ Install new flag style dual-faced sign plates perpendicular to the road.
- ☺ Place signs a safe distance from driveways to avoid damage from large machinery.
- ☺ Keep signs outside of the road right of way to allow for easier utility and road maintenance.
- ☺ Order a second sign if you live on a shared driveway it's the rule.
- ☺ Notify us if your sign is stolen, damaged beyond repair, or faded beyond usefulness.
- ☺ Call Digger's Hotline before you dig, 811 or (800) 242-8511



- ☹ Place signs on mailboxes or mailbox posts.
- ☹ Place signs in the right of way of a numbered highway as it is prohibited by state law.
- ☹ Place signs on utility poles if they aren't your property.
- ☹ Place your address sign so that it is only visible from people travelling in one direction.
- ☹ Place your sign where it will interfere with utility maintenance or road maintenance work.
- ☹ Place your signs where they may be hit or damaged by snowplows or snow removal.
- ☹ Place more than three signs on a single post.
- ☹ Plant trees and bushes in locations that will eventually obstruct your address sign.

Please call 608-269-8698 if you have questions or concerns regarding placement of signs.