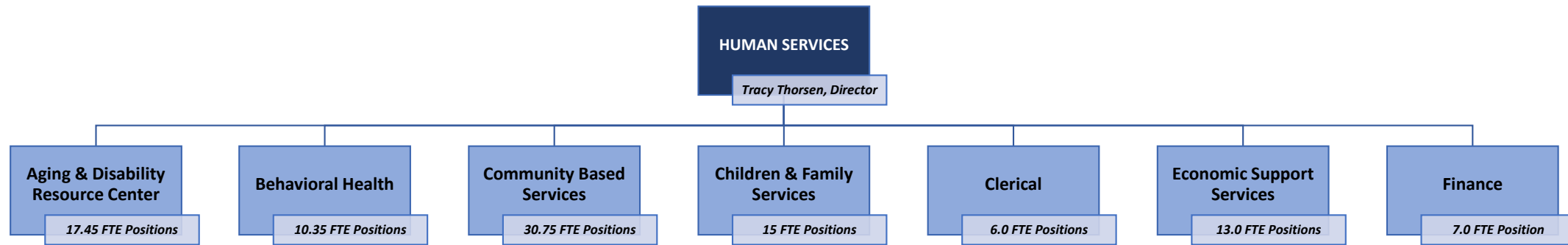


HUMAN SERVICES ORGANIZATIONAL STRUCTURE

Updated 11/12/2024



ADRC	BEHAVIORAL HEALTH	CBS	CFS	CLERICAL	ECONOMIC SUPPORT	FINANCE
FTEs	FTEs	FTEs	FTEs	FTEs	FTEs	FTEs
Pam Weber (MANAGER) 1.00	Elise Anderson (MANAGER) 1.00	Alicia Braun (MANAGER) 1.00	Connie Oates (MANAGER) 1.00	Kelly Gronau (MANAGER) 1.00	Kayte LaDue (MANAGER) 1.00	VACANT (MANAGER) 1.00
Rita Eklov, Administrative Assist. 1.00	Shelly Mawby, Program Associate 1.00	Erica Brandau (SUPERVISOR) 1.00	Wendy Davey (SUPERVISOR) 1.00	Allison Rice, Admin. Assist. 1.00	Fiona Williams, ES Spec./PRS 1.00	Amy Haldeman: Accounting Spec. 1.00
Ben Cornforth: Administrative Assist. 0.50	APS & CRISIS PROGRAMS	BIRTH TO THREE PROGRAM	CHILD PROTECTIVE SERVICES	Jody Anderson, Admin. Assist. 1.00	Bobbi Barbieur, ES Spec. 1.00	Amy Kalember: Billing Spec. 1.00
RESOURCE CENTER	Dan Wollman, BH Prof.-APS 1.00	Miranda Erickson, Svc. Coord.-BT3 1.00	ACCESS	Kjersta Lunde, Admin. Assist. 1.00	Denise Wilde, ES Spec. 1.00	Cassie Erickson, Accounting Spec. 1.00
Alice Ackerman, Elderly Benefits Spec. 1.00	Donna Heyer, BH Prof.-Crisis 1.00	Tammy Stenslien, Svc. Coord.-BT3 1.00	Megan Schimanski, CPS Prof. 1.00	Lisa Jutton, Admin. Assist. 1.00	Desiree Stuart, ES Spec. 1.00	Jakob Liek, Accounting Tech. 1.00
Kirsten Armour, Disability Benefits Spec. 1.00	JaNel Parker, BH Prof.-APS/Crisis 1.00	CCS/CLTS/CST/CCOP PROGRAMS	INITIAL ASSESSMENT	Lisaann Clayton, Admin. Assist. 1.00	Erica Culpitt, ES Spec. 1.00	Kristin Betts, Accounting Tech. 1.00
Kellee Tourdot, Options Counselor 1.00	CLINIC & IDP	Molly Kummer, MH Professional 1.00	Kaitlyn Martin, CPS Prof. 1.00		Heather Aguilar, ES Spec. 1.00	Tim Calkins, Accounting Tech. 1.00
Kory Lueck, Options Counselor 1.00	Amy Schoenoff, Contracted APNP 1.00	Amy Schmidt: CSP Clinic. Coord./MHP 0.50	Christina Krajefska, CPS Prof. 1.00		Jamie Smith, ES Spec. 1.00	
Rhonda Greeno, Options Counselor 1.00	Kelsey Thurston Morrell, MH Nurse 1.00	CCS ONLY	Tamy Maciosek, CPS Prof. 1.00		Jessica Shisler, ES Spec. 1.00	
Emily Reitz, Dementia Care Spec. 1.00	Lori Svendsen, Clinical SA Professional 1.00	Emily Nolte, Svc. Coord.-CCS/BH Prof. 0.50	Taylor Miller, CPS Prof. 1.00		Kristin Magnus, ES Spec. 1.00	
Stephanie Haas, Com. Health Worker (GWAAR) 1.00	Emily Nolte, BH Prof./Svc. Coord-CCS 0.50	Kayla Ryba, Svc. Coord.-CCS 1.00	ONGOING		Maria Tello Valdez, ES Spec. 1.00	
TRANSPORTATION PROGRAM	Vicki Riley, BH Prof./Svc. Coord-CCS 0.25	Kellie Koball, Svc. Coord.-CCS 1.00	Amanda Schroeder, CPS Prof. 1.00		VACANT, ES Spec. 1.00	
Julie Leis, Transportation Coord. 1.00	Javier Cadena, Clinical SA Prof. (LUE) 0.10	Lane Lindner, Svc. Coord.-CCS 1.00	Angela Tuma, CPS Prof. 1.00		VACANT, ES Spec. 1.00	
Scott Tourdot, Mini Bus Driver 1.00	COMMUNITY SUPPORT PROGRAM	Vicki Riley, Svc. Coord.-CCS/CST/BH Prof. 0.75	Kaocheng Moua, CPS Prof. 1.00			
Tim Ackerman, Mini Bus Driver 0.50	Amy Schmidt: CSP Clinical Coord./MHP 0.50	CCS/CLTS DUAL SERVICES	Renae Caldwell, CPS Prof. 1.00			
<i>Additional LUE Staff:</i>	Grace Anderson, CSP Case Manager 1.00	Alexis Goodwin, Svc. Coord.-CCS/CLTS 1.00	PERMANENCY RESOURCES			
<i>Christy Weiner, Jeff Baker, Jim Volden, Kathie Olson, Sammy Steele, Steve Aney</i>		Amanda Wilkie, Svc. Coord.-CCS/CLTS 1.00	Robyn Ryba, Perm. Resource Coord. 1.00			
NUTRITION PROGRAM		Ashley Betterly, Svc. Coord.-CCS/CLTS 1.00	FOSTER CARE/KINSHIP CARE			
Patti Abbott, Nutrition Coord. 1.00		Ashley Stark, Svc. Coord.-CCS/CLTS 1.00	Kasey Kaiser, Foster Care Coord. 1.00			
PART-TIME NUTRITION STAFF 4.45		Brandie Gress, Svc. Coord.-CCS/CLTS 1.00	YOUTH JUSTICE			
Ann Schreier, Meal Site Mgr. (Cashton)		Damian Dauphin, Svc. Coord.-CCS/CLTS 1.00	Betsy Parr, YJ Prof. 1.00			
Tom Haeflinger, Hm. Delivered Meals (Cashton) LUE		Emily Fenner, Svc. Coord.-CCS/CLTS 1.00	Kari McKenna, YJ Prof. 1.00			
Alrita Benish, Meal Site Mgr. (Kendall)		Erica Erdman, Svc. Coord.-CCS/CLTS 1.00				
Shirley Degenhardt, Meal Site Mgr. (Norwalk)		Erikka Ashwell, Svc. Coord.-CCS/CLTS 1.00				
Sandra Clemerson, Meal Site Mgr. (Sparta)		Jana Valdez, Svc. Coord.-CCS/CLTS 1.00				
Dan Hemmersbach, Hm. Delivered Meals (Sparta) LUE		Katie Wollman, Svc. Coord.-CCS/CLTS 1.00				
Julie Jandt, Hm. Delivered Meals (Sparta) LUE		Sarah Koenen, Svc. Coord.-CCS/CLTS 1.00				
Joanne Capaul, Hm Delivered Meals (Sparta) LUE		Tanya Evanson, Svc. Coord.-CCS/CLTS 1.00				
Barbara Jotham, Hm Delivered Meals (Sparta) LUE		VACANT, Svc. Coord.-CCS/CLTS 1.00				
Catherine Neumann, Meal Site Mgr. (Tomah)		CLTS ONLY				
Russell Backstrom: Hm. Delivered Meals (Tomah) LUE		Angela Gray, Svc. Coord.-CLTS 1.00				
Paul Gegenfurtner, Hm. Delivered Meals (Tomah)		Ashley Hoekstra, Svc. Coord.-CLTS 1.00				
Patti Koscal, Driver, Hm. Delivered Meals (Tomah)		Ashly Dieckman, Svc. Coord.-CLTS 1.00				
Steve Kamps, Bulk Food Delivery Driver		Gina Phelps, Svc. Coord.-CLTS 1.00				
Sharon Karis, Evidence-Based Classes LUE		Jessica Jandt, Svc. Coord.-CLTS 1.00				
<i>Additional LUE Staff (Meal Site Subs):</i>		Laura Mahan-Schmitz, Svc. Coord.-CLTS 1.00				
<i>Rita Byers (Cashton); Jim Schaller (Sparta); Trudi Brohmer & Dee Rudolph (Tomah); Laura Allen (Kendall & Norwalk); Arnold Muenzenberger (bulk food delivery)</i>		Pennie Dwyer, Svc. Coord.-CLTS 1.00				
ADRC FTEs 17.45	Behavioral Health FTEs 10.35	CBS FTEs 30.75	CFS FTEs 15.00	Clerical FTEs 6.00	ESS FTEs 13.00	Finance FTEs 7.00
TOTAL HUMAN SERVICES FTEs: 100.6		TOTAL HUMAN SERVICES REGULAR EMPLOYEES: 105 (95 full-time; 11 part-time)		TOTAL HUMAN SERVICES LIMITED USE EMPLOYEES: 20		

ABBREVIATIONS	ADRC = Aging & Disability Resource Center	BH = Behavioral Health	CFS = Children & Family Services	CSP = Community Support Program	LUE = Limited Use Employee	Prof. = Professional
	Admin. = Administrative	BT3 = Birth to Three	CLTS = Children's Long Term Support	CST = Coordinated Services Team	Mgr. = Manager	SA = Substance Abuse
	APNP = Advance Practice Nurse Practitioner	CBS = Community Based Services	Com. = Community	ES = Economic Support	MH = Mental Health	Spec. = Specialist
	APS = Adult Protective Services	CCOP = Children's Community Options Program	Coord. = Coordinator	FTE = Full Time Equivalent	MHP = Mental Health Professional	Svc. = Service
	Assist. = Assistant	CCS = Comprehensive Community Services	CPS = Child Protective Services	Hm. = Home	Perm. = Permanency	Tech. = Technician

Shading Indicates Shared Supervision Across Units