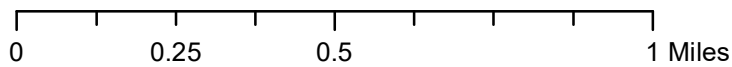
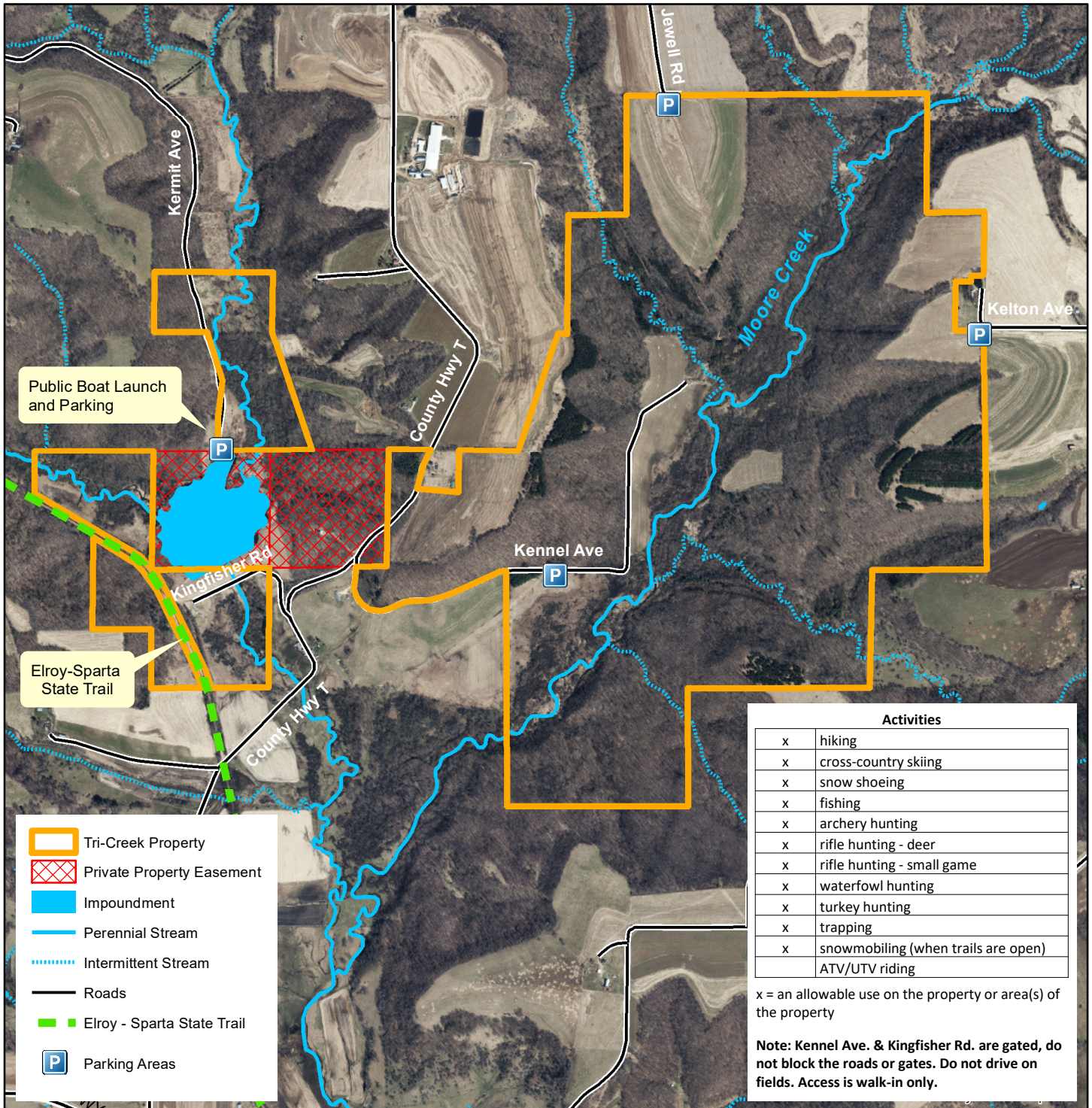


Tri-Creek Property - Town of Ridgeville



Disclaimer: Maps are for graphical purposes only. The delineation of boundaries is a general representation and does not represent a legal survey. Monroe County does not assume liability for the use of this map.

Monroe County LCD
Tri-Creek Property
2020 Aerial Imagery

Data Sources:
Monroe County LIO
WI DNR