

**U. S. Public Land Corner
Maintenance**

116

Corner: E1/4 Sec. 32, T16N-R1E

41601322000

<u>Date</u>	<u>Crew</u>	<u>Monument type</u>
January 31, 2024	Zachariah P. Dechant Gary L. Dechant	Found Henry Schroeder's 1915 iron pipe, it is a 1 1/4" pipe with 1/2" drill hole near top on SE side, sign on SE side, 3.5' south and 1.5' east of 3-way fence corner
1) Set 5/8"x24" rebar, 10' east of 38" Burr Oak (Schroeder's 1915 BT)		<u>Bearing</u> N53E
2) Set 1"x24" iron pipe, NW side of 1'x1' stone		S17E
3) Set 5/8"x24" rebar, NE side of 1'x1' stone		S26W
4) Set 1"x3' iron pipe 7' north of fence		N70W

Compass bearings



I, Bryan H. Meyer, do hereby certify that on the 19th day of August 1983, I found (evidence) ~~(no evidence)~~ of the East 1/4 corner of Section 32, T 16 N, R 1 E Fourth Principal Meridian, and I re-established said corner according to the Wisconsin Statutes as shown and described hereon.

Dated this 20th day of Oct. 1983.

Bryan H. Meyer
Deputy County Surveyor

Deputy County Surveyor
Title

History of corner establishment since Original Government Survey
Henry Schroeder was here in May of 1915 and found evidence of the original corner. He set an iron pipe at the corner.

Description of corner evidence found:

Found Mr. Schroeder's iron pipe up 4 inches, 3 1/2 feet South and 1 1/2 feet East of a three-way fence corner. Also found Mr. Schroeder's Burr Oak bearing tree with blaze mark still evident.

**See Reverse Side
For Maintenance**



COUNTY SURVEYOR FORM NO. 1

Description of corner and witness monuments, references and accessories used to perpetuate the original or re-established location of this corner:

Crew: Meyer, Wilhite
Date: August 19, 1983-2:00 P.M.
Weather: Humid, P. Cloudy, 95°±
Witnesses to corner location:

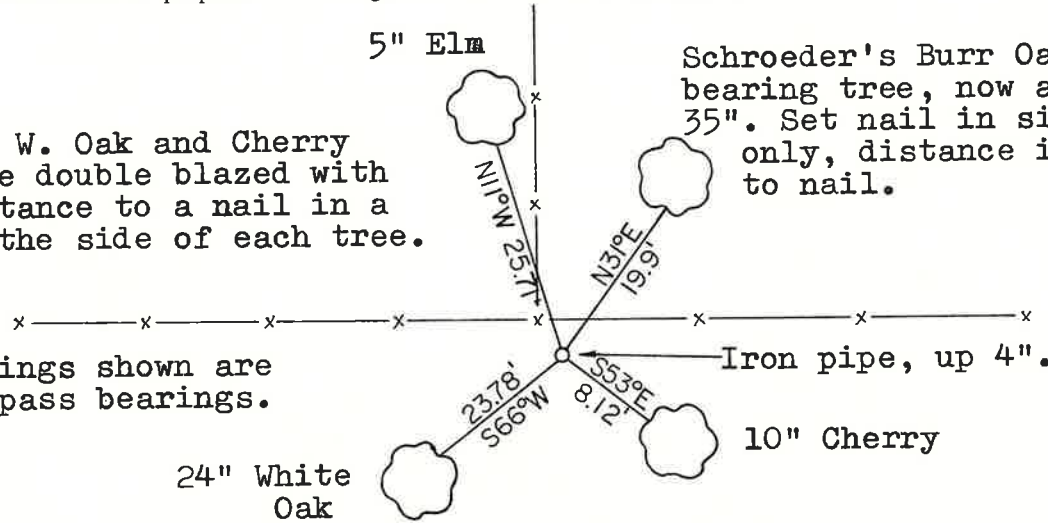
Bryan H. Meyer

Dallas Wilhite

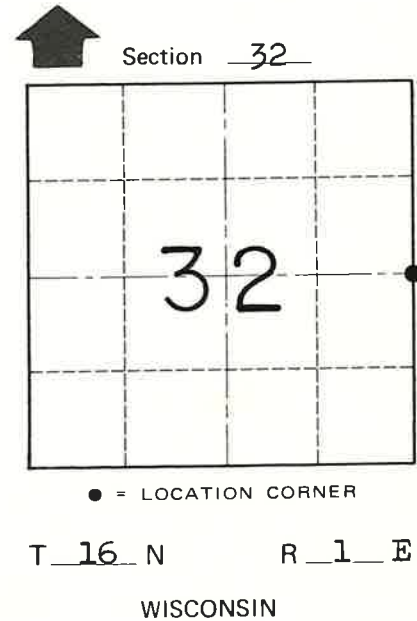
The Elm, W. Oak and Cherry trees are double blazed with each distance to a nail in a hack in the side of each tree.

The bearings shown are hand compass bearings.

Tried to replace pipe with a Harrison marker but could not remove the pipe. The pipe remains as the corner.



Schroeder's Burr Oak bearing tree, now a 35". Set nail in side only, distance is to nail.



APPROVED: Harley A. Sime
Monroe County Surveyor

SURVEY CONTROL ORDER

Horizontal	_____
Vertical	_____

WISCONSIN COORDINATE SYSTEM

Corner	East (X)	North (Y)	Elevation (Z)	Zone
Control Sta. Name				

~~City~~ Village or Town of Clifton
County of Monroe