

U. S. Public Land Corner Maintenance

115

Corner: E1/4 Sec. 31, T16N-R1E

41601312000

Date	Crew	Monument type
January 31, 2024	Zachariah P. Dechant Gary L. Dechant	Found Harrison intact, at 4-way fence corner, sign nailed to corner post, in centerline of old road bed

- 1) Set 5/8"x24" rebar, 4' SW of 12" White Oak
- 2) Set 5/8"x24" rebar, 5' NW of 6" Hickory
- 3) Set 5/8"x24" rebar, 4' NW of 16" Hickory (1989 BT)
- 4) Set 5/8"x24" rebar, in ditch of old road bed

Bearing	Distance
N57E	58.76'
S67E	40.54'
S39E	11.85'
N58W	13.69'



Gary L. Dechant
February 22, 2024

Compass bearings
Trees double blazed

I, Lawrence A. Feddersen, do hereby certify that on the Ninth day of January 19 89, I found ~~(evidence)~~ (no evidence) of the East Quarter corner of Section 31, T 16 N, R 1E Fourth Principal Meridian, and I re-established said corner according to the Wisconsin Statutes as shown and described hereon.

Dated this 28 day of March 19 90.

Lawrence A. Feddersen

Registered Land Surveyor
Title

History of corner establishment since Original Government Survey

The is no subsequent history of monument perpetuation since the original U.S. Government survey in Monroe County.

Description of corner evidence found:

Used East - West fence line and a straight line between the NE corner and the SE corner.

See Reverse Side For Maintenance

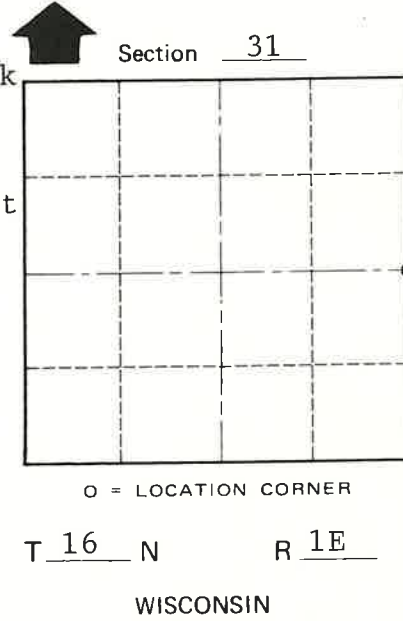
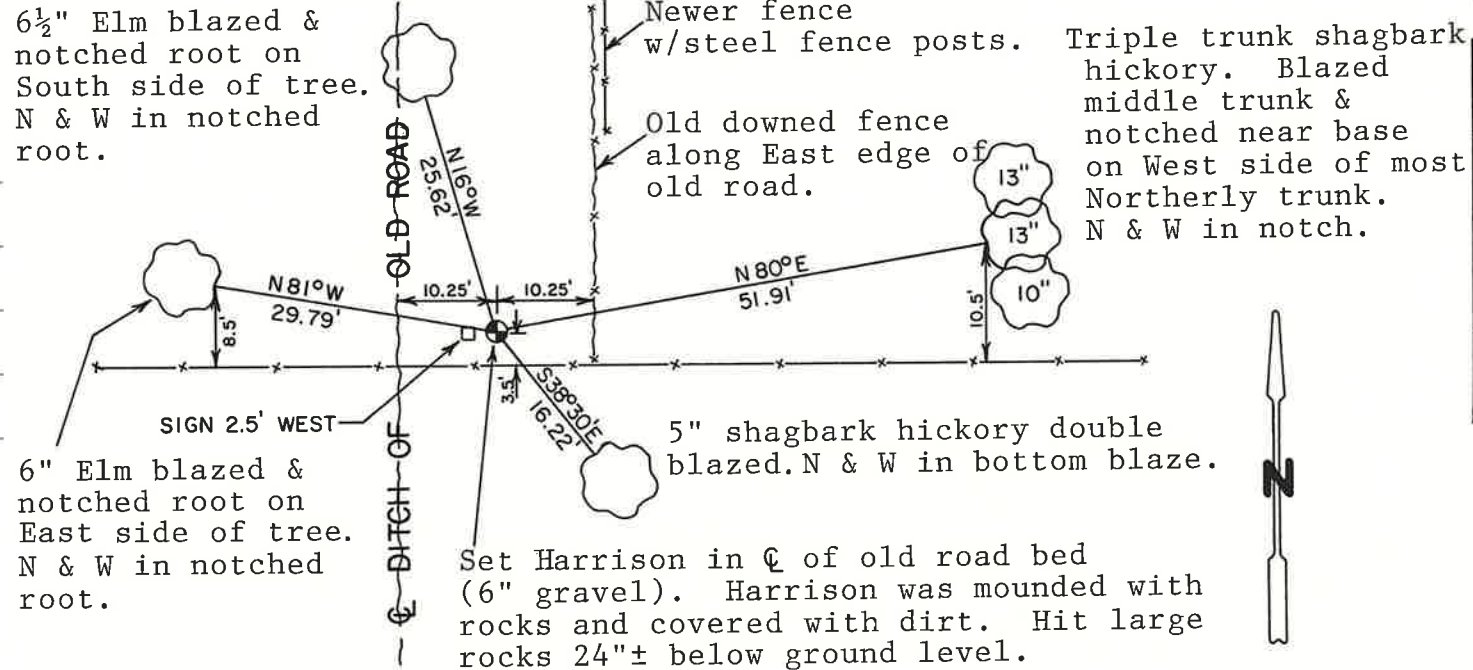
Description of corner and witness monuments, references and accessories used to perpetuate the original or re-established location of this corner:

Witnesses to corner location:

Lawrence A. Feddersen

Gary Dechant

Timothy Jeatran



COUNTY SURVEYOR FORM NO. 1

SURVEY CONTROL ORDER

Horizontal	_____
Vertical	_____

WISCONSIN COORDINATE SYSTEM

Corner	East (X)	North (Y)	Elevation (Z)	Zone
Control Sta. Name				

City, Village or Town Clifton
County of Monroe