

U. S. Public Land Corner Maintenance

109

Corner: NE Sec. 32, T16N-R1E

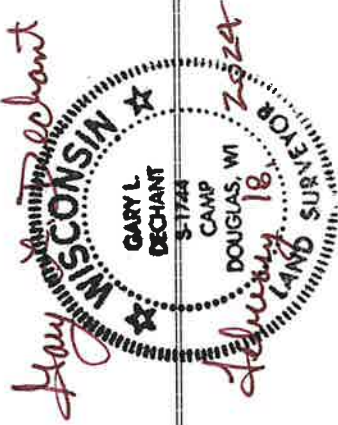
41601290000

Date	Crew	Monument type
February 2, 2024	Zachariah P. Dechant Gary L. Dechant	Found 2" iron pipe at four way fence corner, north side of pipe pinched in, verified by remains of 1983 bearing trees, Sign on north side of pipe

- 1) Set 5/8"x24" iron rebar, 4' SW of 11" Hickory
- 2) Set 5/8"x24" iron rebar, NW side of 2'x2' flat stone
- 3) Set 5/8"x24" iron rebar, 8' west of fence
- 4) Set 5/8"x24" round rebar, 6' west of fence, 5' SE of 9" Black Cherry

Bearing	Distance
N42E	24.41'
S62E	31.71'
S20W	19.62'
N15W	14.88'

Compass bearings
Bearing trees double blazed



I, Bryan H. Meyer, do hereby certify that on the 19th day of August 1983, I found (evidence) ~~an evidence~~ of the Northeast corner of Section 32, T 16 N, R 1 E Fourth Principal Meridian, and I re-established said corner according to the Wisconsin Statutes as shown and described hereon.

Dated this 20th day of Oct. 1983.

Bryan H. Meyer
Deputy County Surveyor
Title

History of corner establishment since Original Government Survey
Henry Schroeder was here in May of 1915 set a "stake". James J. Carroll was here in July of 1972, where he calls for a pipe at this corner. Mr. Carroll was here again in December of 1978 calls for a stone at this corner.

Description of corner evidence found:

Found a 1 1/4" iron pipe 1 foot+ South of a four-way fence corner. Also found both of Mr. Schroeder's White Oak bearing trees. The pipe fits these trees very well for bearing and distance. It is unclear wheather this pipe was set by Mr. Schroeder or Mr. Carroll, however, it fits Mr. Schroeder's bearing trees, therefore, I accepted it as the corner.



Description of corner and witness monuments, references and accessories used to perpetuate the original or re-established location of this corner:

Crew: Meyer, Wilhite
Date: August 19, 1983-3:45 P.M.
Weather: Humid, 90°±.

Witnesses to corner location:

Bryan H. Meyer

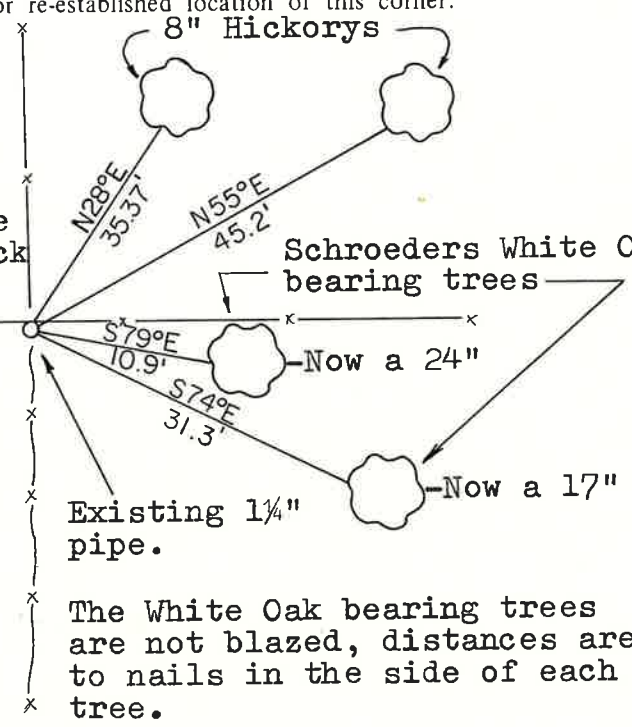
Dallas Wilhite

Both Hickory bearing trees are double blazed with the distance measured to a nail set in a hack in the side of each tree.

The bearings shown are hand compass bearings.

No scale.

See Reverse Side For Maintenance



The White Oak bearing trees are not blazed, distances are to nails in the side of each tree.



COUNTY SURVEYOR FORM NO. 1

APPROVED: Harley A. Sime
Monroe County Surveyor

SURVEY CONTROL ORDER

Horizontal	_____
Vertical	_____

WISCONSIN COORDINATE SYSTEM

Corner	East (X)	North (Y)	Elevation (Z)	Zone
Control Sta. Name				

~~City~~ Village of Town of Clifton
County of Monroe