

U. S. Public Land Corner Maintenance

104

Corner: S1/4 Sec. 26, T16N-R1E

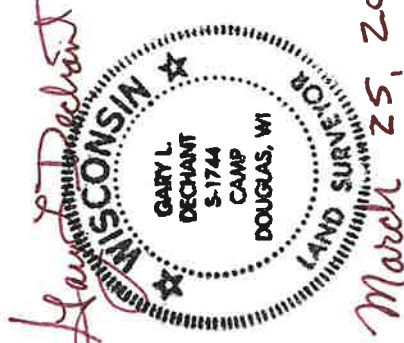
41601260020

Date	Crew	Monument type
March 21, 2024	Zachariah P. Dechant Gary L. Dechant	Found Harrison in trail between fences and fields, top broke off

- 1) Set 5/8"x24" rebar, 3' SW of 4" Apple tree
- 2) Set 5/8"x24" rebar, 4' NW of 7" Red Oak
- 3) Set 5/8"x24" rebar, 12' south of fence
- 4) Set 5/8"x24" rebar

Trees double blazed
Compass bearings

Bearing	Distance
N64E	51.78'
S74E	27.33'
S73W	39.14'
N19W	21.40'



CERTIFICATE

CERTIFIED LAND CORNER

41601260020

No. 104

I, Harley A. Sime, do hereby certify that on the 25 day of May 1976, I found (evidence) (~~no evidence~~) of the S 1/4 corner of Section 26, T 16 N, R 1 E, Fourth Principal Meridian, and I re-established said corner according to the Wisconsin Statutes as shown and described hereon.

History of original corner establishment:

See Reverse Side For Maintenance

Description of corner evidence found:

Accepted a 3-way fence as the best available evidence after surveying out Section 26. Found a squared off stone, bent over, at this location. Whether it was an unrecorded stone or merely a stone that was by coincidence in this spot is speculation. There was a lot of stone found where we dug.

Dated this 7 day of Sept. 1977.

County Surveyor
Title

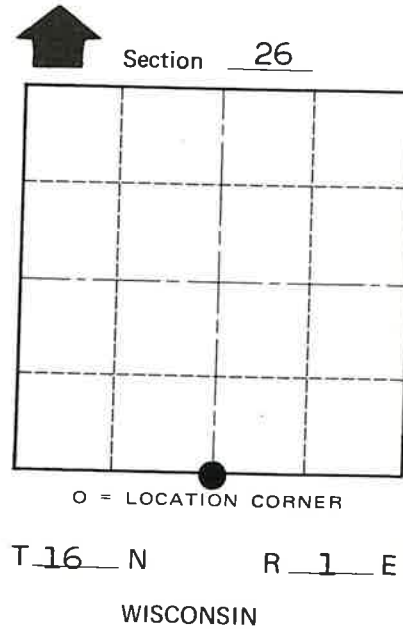
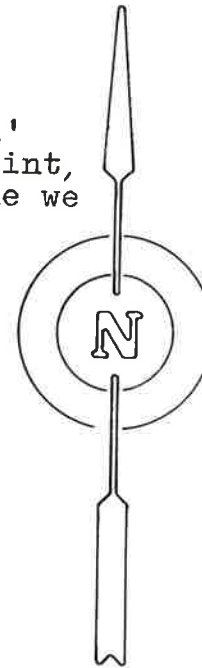
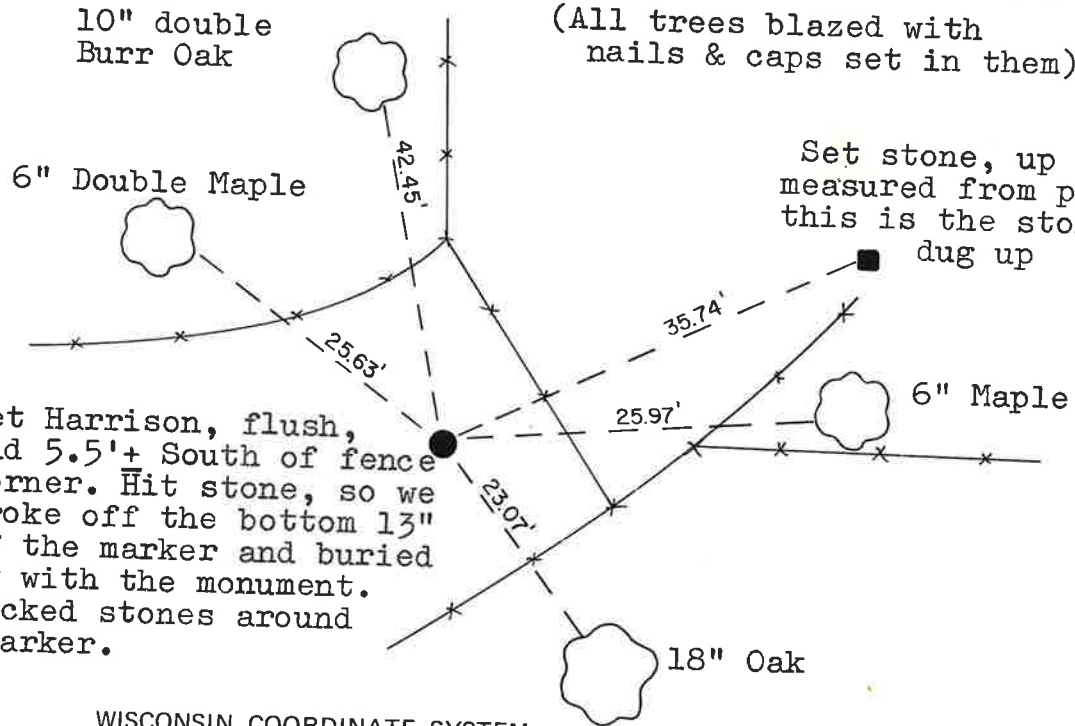
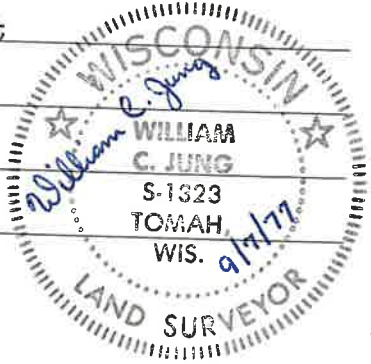
**Approved: HARLEY A. SIME
MONROE CO. SURVEYOR**

Description of corner and witness monuments, references and accessories used to perpetuate the original or re-established location of this corner:

Witnesses to corner location:

W. Jung

D. Malliet



SURVEY CONTROL ORDER

Horizontal	_____
Vertical	_____

WISCONSIN COORDINATE SYSTEM

Corner	East (X)	North (Y)	Elevation (Z)	Zone
Control Sta. Name				

City, Village or Town Clifton

County of Monroe

COUNTY SURVEYOR FORM NO. 1