

U. S. Public Land Corner Maintenance

88

Corner: S1/4 Sec. 21, T16N-R1E

41601210020



<u>Date</u>	<u>Crew</u>	<u>Monument type</u>
February 7, 2024	Zachariah P. Dechant Gary L. Dechant	Found Harrison intact on NW edge of 24" Black Oak, 1985 BT. at fence corner. 32' south & 39' east of stream

- 1) Set 5/8"x24" iron rebar, 6' SW of 14" White Oak (1985 BT)
- 2) Set 5/8"x24" iron rebar, west side of stone, 5' east of fence
- 3) Set 5/8"x24" iron rebar
- 4) Set 5/8"x24" round rebar, 4' SE of 14" Black Cherry

<u>Bearing</u>	<u>Distance</u>
N10E	59.18'
S10E	15.87
S33W	18.02'
N52W	44.44'

Compass bearings
Set stones over rebars

I, Bryan H. Meyer, do hereby certify that on the 7th day of November 19 85, I found (evidence) ~~no evidence~~ of the South 1/4 corner of Section 21, T 16 N, R 1 E Fourth Principal Meridian, and I re-established said corner according to the Wisconsin Statutes as shown and described hereon.

Dated this 22nd day of Nov. 19 85.

Bryan H. Meyer
Deputy County Surveyor
Title

History of corner establishment since Original Government Survey

Nothing recorded.

Description of corner evidence found:

I accepted the intersection of fences from the North, South and West as the best available evidence.



See Reverse Side For Maintenance

COUNTY SURVEYOR FORM NO. 1

Description of corner and witness monuments, references and accessories used to perpetuate the original or re-established location of this corner:

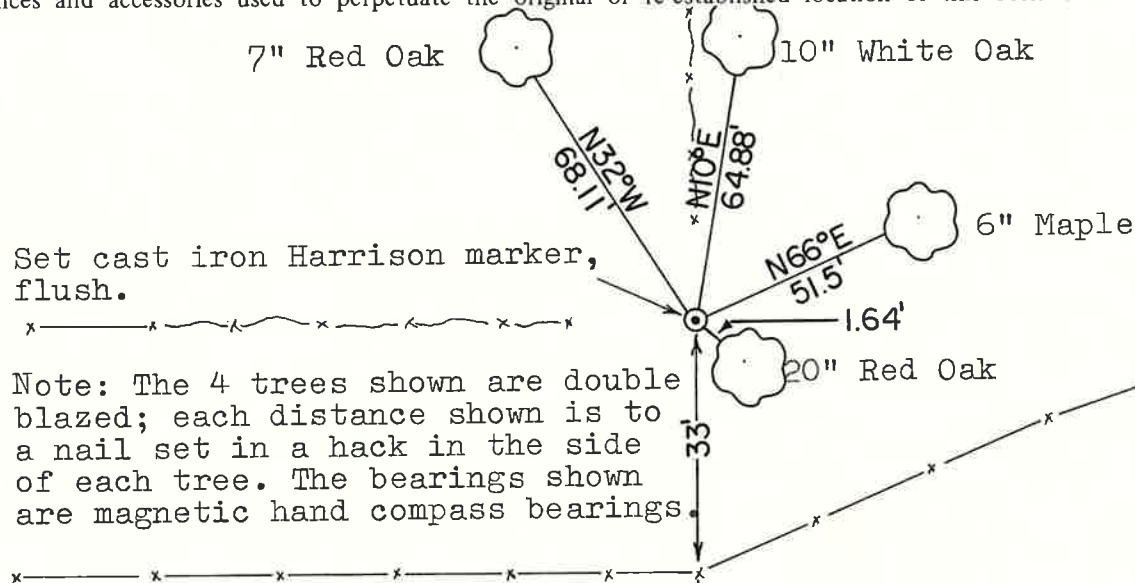
Crew: Meyer, Sime
Date: November 7, 1985

Witnesses to corner location:

Bryan H. Meyer

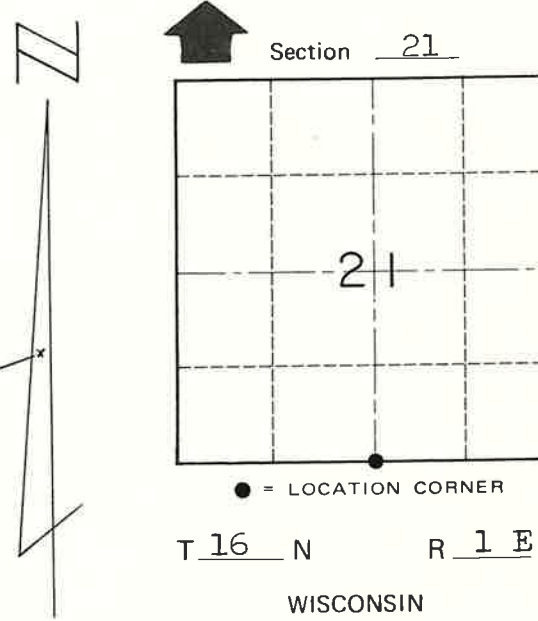
Gary Sime

7" Red Oak 10" White Oak



Set cast iron Harrison marker, flush.

Note: The 4 trees shown are double blazed; each distance shown is to a nail set in a hack in the side of each tree. The bearings shown are magnetic hand compass bearings.



SURVEY CONTROL ORDER

Horizontal _____

Vertical _____

WISCONSIN COORDINATE SYSTEM

Corner	East (X)	North (Y)	Elevation (Z)	Zone
Control Sta. Name				

~~City, Village or~~ Town of Clifton
County of Monroe