

# U. S. Public Land Corner Maintenance

# 89

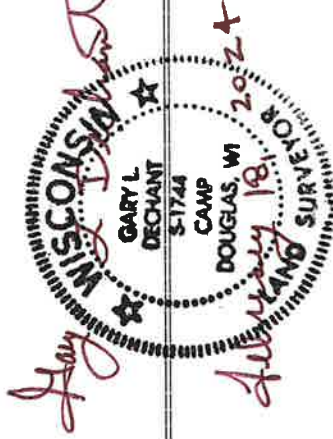
Corner: SW Sec. 21, T16N-R1E

41601200000

Date	Crew	Monument type
January 29, 2024	Zachariah P. Dechant Gary L. Dechant	Found Harrison at three way fence corner, sign 1' south
1) Set 5/8"x24" iron rebar, 6' SW of 5" Black Oak		<u>Bearing</u> <u>Distance</u>
2) Set 5/8"x24" iron rebar, 4' NW of 10" Ironwood		N19E      49.35'
3) Set 5/8"x24" iron rebar, 4' NE of 3"-6" double Maple		S27E      21.40'
4) Set 2' section of steel fence post, 4' SE of 15" Basswood (1985 BT)		S43W      43.56'
		N26W      30.66'

Compass bearings

Bearing trees double blazed



I, Bryan H. Meyer, do hereby certify that on the 4<sup>th</sup> day of November 1985, I found (evidence) ~~no evidence~~ of the Southwest corner of Section 21, T16 N, R 1 E Fourth Principal Meridian, and I re-established said corner according to the Wisconsin Statutes as shown and described hereon.

Dated this 22nd day of Nov. 1985.

Deputy County Surveyor

Bryan H. Meyer

History of corner establishment since Original Government Survey

Nothing recored.

Description of corner evidence found:

I accepted the occupied fence corner as the best available evidence.



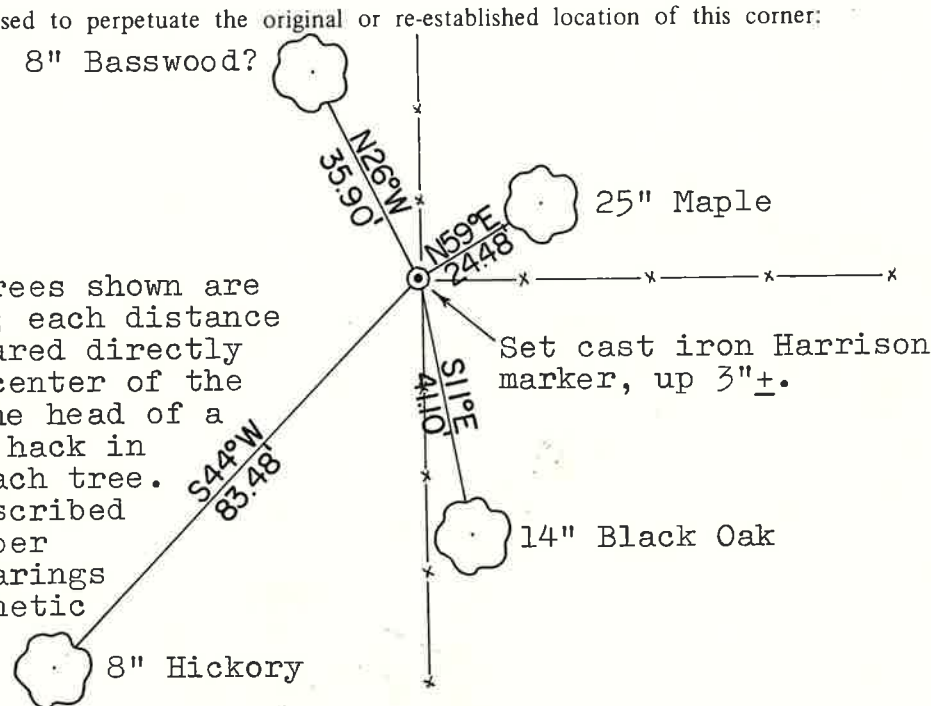
**See Reverse Side For Maintenance**

Description of corner and witness monuments, references and accessories used to perpetuate the original or re-established location of this corner:

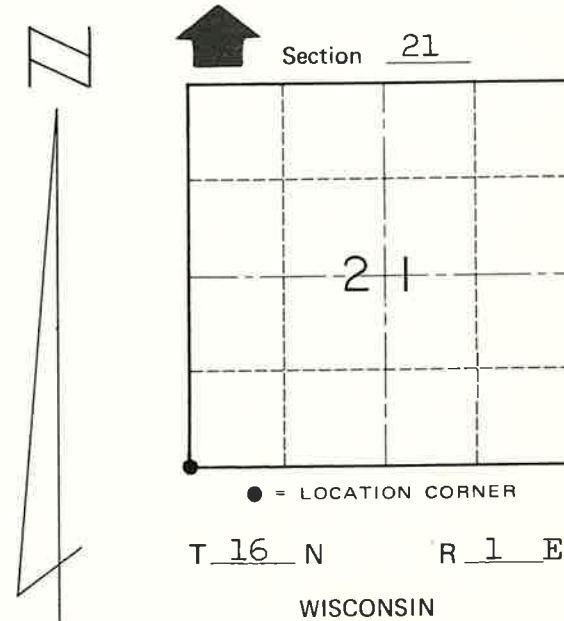
Crew: Meyer  
Date: November 4, 1985 - 1:00 P.M.  
Weather: Clear, Windy, 45°±  
Witnesses to corner location:

Bryan H. Meyer

8" Basswood?



Note: The 4 trees shown are double blazed; each distance shown is measured directly from the top center of the Harrison to the head of a nail set in a hack in the side of each tree. Each tree is scribed "M" in the upper blaze. The bearings shown are magnetic hand compass bearings.



COUNTY SURVEYOR FORM NO. 1

SURVEY CONTROL ORDER

Horizontal	_____
Vertical	_____

WISCONSIN COORDINATE SYSTEM

Corner	East (X)	North (Y)	Elevation (Z)	Zone
Control Sta. Name				

~~City, Village or~~ Town of Clifton  
County of Monroe